



Assembly Guide

TEC606_2017_A

Check out our other products online at
www.copernicused.com

For assistance, please contact us:

1-800-267-8494

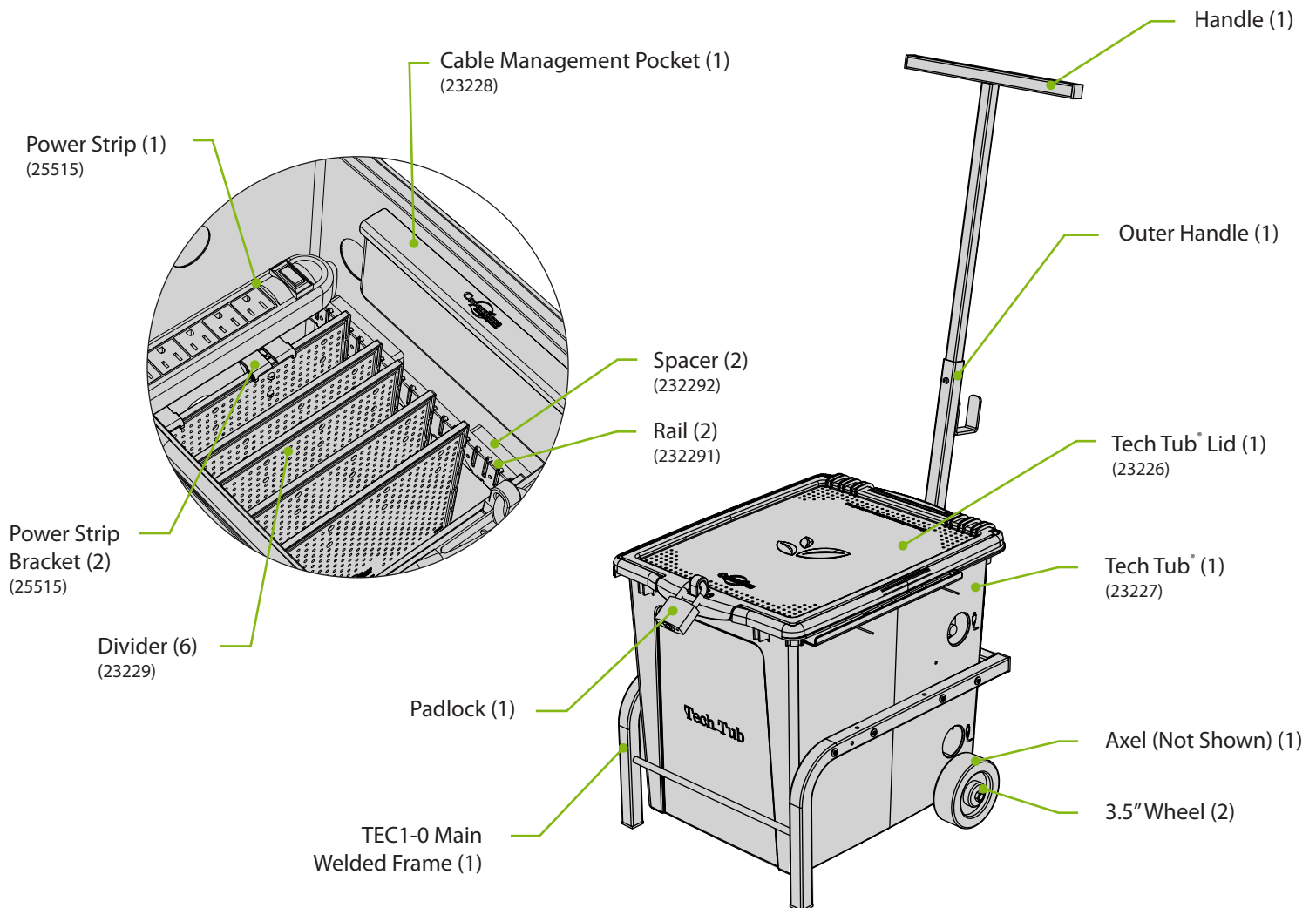
Email info@copernicused.com

Have your packing slip ready for reference

WARNING



- This product is meant to be assembled by an adult.
- In its unassembled state, small parts present a hazard.
- To be used under direct supervision of an adult.





Assembly Guide

TEC606_2017_A

Check out our other products online at
www.copernicused.com

For assistance, please contact us:

1-800-267-8494

Email info@copernicused.com

Have your packing slip ready for reference

Dear Educator,

Thank you for purchasing one of our products. I hope that the Tech Tub® Trolley useful in your classroom.

If you have any questions, concerns, or ideas please contact us by telephone at 1-800-267-8494 or email at info@copernicused.com.

Enjoy using your new product and happy teaching.

Jim Phillips
 Chief Cook and Bottle Washer

We do not inherit the
 earth from our ancestors,
 we borrow it from our
 children.

NORTH AMERICAN
 PROVERB

Change is the end result
 of all true learning.

LEO BUSCAGLIA

What you leave behind is
 not what is engraved in
 stone monuments, but
 what is woven into the
 lives of others.

PERICLES

Education is the most
 powerful weapon which
 you can use to change the
 world.

NELSON MANDELA

**Life
 Time**

Tech Tub® & Lid
 Warranty

**5
 Year**

Frame
 Warranty

1 Year

Tech Tub®
 Power Supply
 Warranty

Validate Your Warranty

To validate your warranty, submit the ON-LINE form at www.copernicused.com
Enter a draw to win a Copernicus Product for your classroom at the same time!



Warning! Hazard Risks!

Please read the warnings below for important safety information regarding your product. Failure to read these warnings or to follow the instructions below could result in personal injury or damage to your product that could void your warranty.



Small
Parts

In its unassembled state, this product contains parts that can be hazardous to small children. This product should be assembled by an adult.



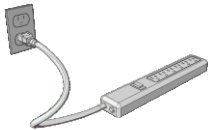
Adult
Supervision

This product is to be used under the supervision of an adult.



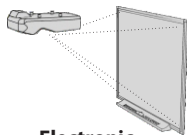
Indoor Use
Only

This product is intended for indoor use only. To reduce the risk of fire or electric shock, do not expose this product to rain or moisture. The internal components are not sealed from the environment.



Power Strip
Specifications

Read your power strip electrical specifications. Only plug in devices that are approved for use with this power strip. Connect the supplied power strip directly to a wall outlet. **Do not connect to another power strip or use an extension cord.** Unplug when not in use. **Do not leave this product plugged in for more than 72 consecutive hours.** Turn off power strip before unplugging.



Electronic
Equipment

Read the electrical specifications of any electronic equipment you are using with your Copernicus products. Failure to read these specifications and follow their instructions could result in damage to your equipment or personal injury.



Cable Trip
Hazard

Ensure that any cables extending across the floor to your product are properly bundled and marked to avoid tripping or falling which may lead to personal injury.



Electrical Shock

Do not install or use the electrical components of this unit during a lightning storm.



Climb Hazard

Do not climb on, hang from or suspend objects from any components of your product unless otherwise specified.

Tips for Assembly

Watch for These Helpful Symbols

This symbol denotes a 2- or 3- Person Task. For safety, please ensure that there are the suggested number of people working on steps displaying this symbol.



Watch for this symbol throughout the Assembly Guide. Wherever you see it, pay close attention. The symbol denotes a step needing extra attention to ensure it is done correctly.



The star symbol highlights an advisory note.

Before You Begin

- Lay out and identify all of the included parts.
- The hardware has been packed according to step.
- Read the assembly guide over once to familiarize yourself with them.



Please note that in its unassembled state, this product contains parts that can be hazardous to small children. This product should be assembled by an adult.



As You Assemble the Unit

- Follow the steps in sequence.
- Before beginning each step, find the part(s) that you need for that step.
- Pay attention to the labels on the parts; they are there to help direct you at certain stages.
- The title of each step states what you will be doing. Review the text and the pictures as you build the unit.

Customer Service - FAQ's



For missing parts and other issues regarding this product:

I lost the key, how do I get a new one?

Please call Copernicus Customer Service, where we will be happy to help.

1-800-267-8494. Monday - Friday 8:30am - 4:30 pm EST.

OR

Email our Tech Support Service at info@copernicused.com

Need Tech Support?

Have a Question?



Email our Tech Support Service

Check out some of our other great products!



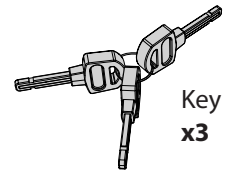
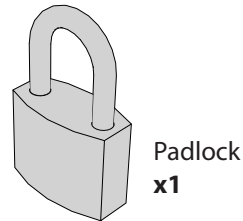
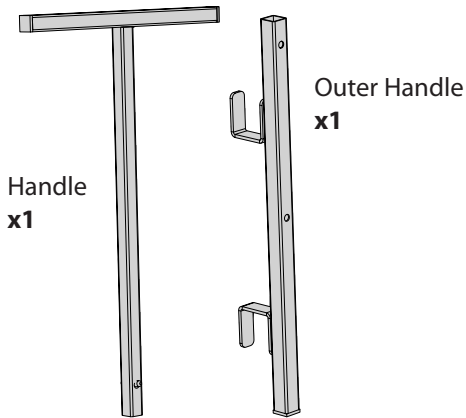
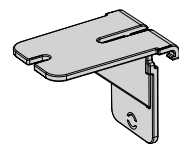
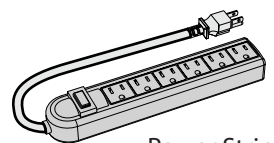
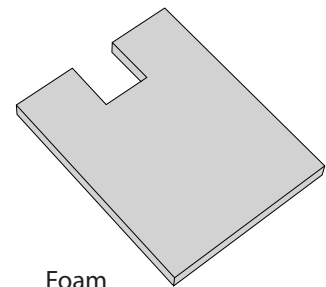
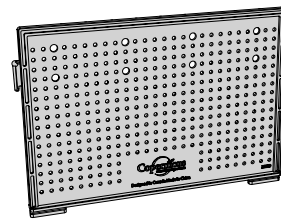
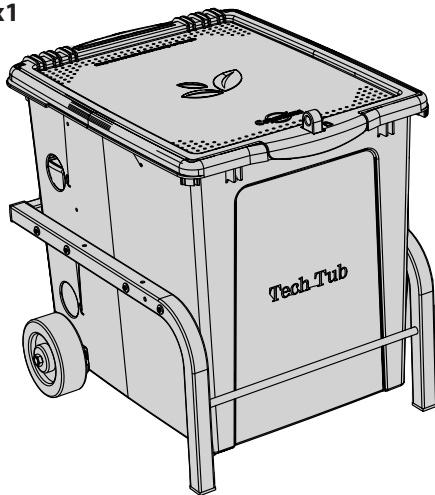
www.copernicused.com

Before beginning, you should have:

Additional tools required:

 OR 10mm (3/8") wrench
Adjustable wrench (1)

TEC606

Tech Tub® and Trolley
x1Hardware
Actual Size

(A) M6 x 30mm Bolt
x2



(B) M3 x 14mm Carriage Screw
x4



(C) M3 Flat Washer
x4



(D) M3 Lock Washer
x4



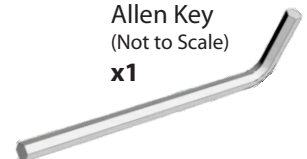
(E) M3 Wing Nut
x4



(F) M6 Lock Washer
x2



Allen Key
(Not to Scale)
x1



1

Actual Size:

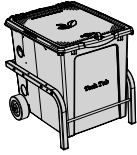


A
2x



F
2x

You will need: (Not to Scale)

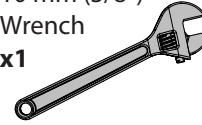


Tech Tub[®]
and Trolley
x1



Outer Handle
x1

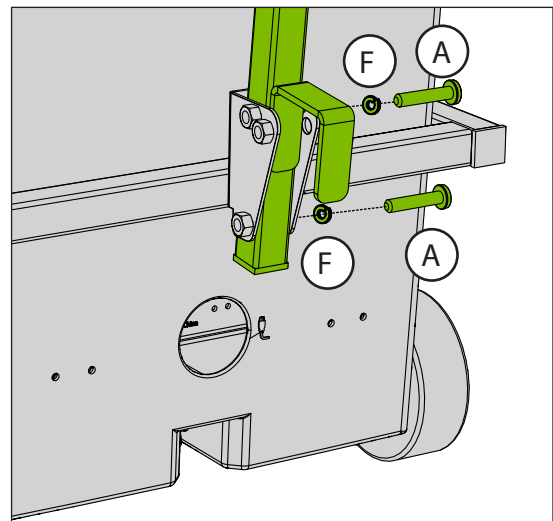
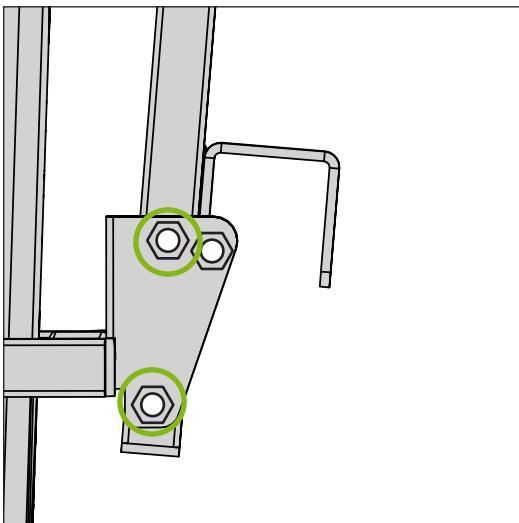
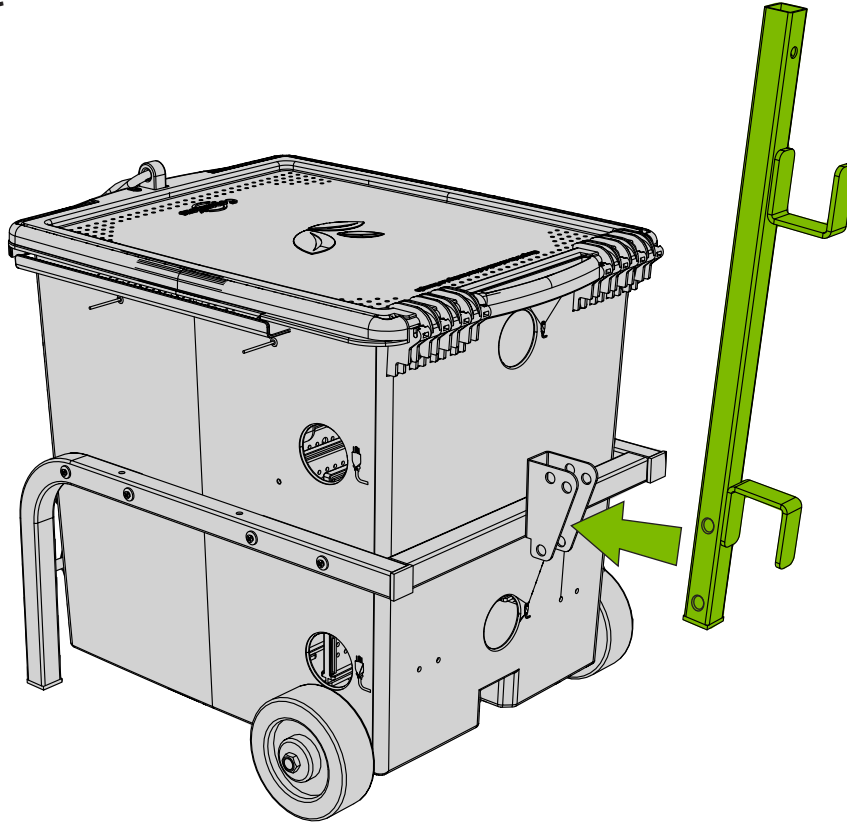
Adjustable wrench
10 mm (3/8")
Wrench
x1



Allen Key
(Not to Scale)
x1



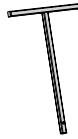
Install Outer Handle



2

Actual Size:

You will need: (Not to Scale)



Handle
x1



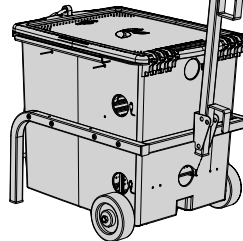
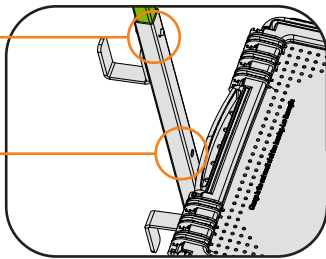
Tech Tub[®]
and Trolley
x1

Insert and Adjust the Handle

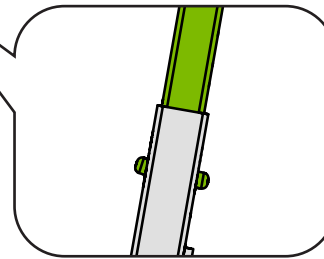
Highest Hole
Position

Lowest Hole
Position

! There are two hole positions
for the handle.



! Double lock at the highest hole
(to prevent accidental disassembly)
- press both to lower height.



3

Actual Size:



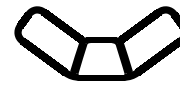
B
x4



C
x4

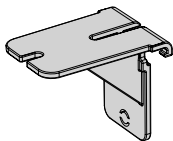


D
x4

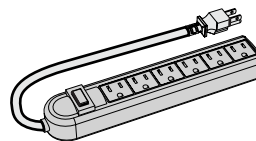


E
x4

You will need: (Not to Scale)

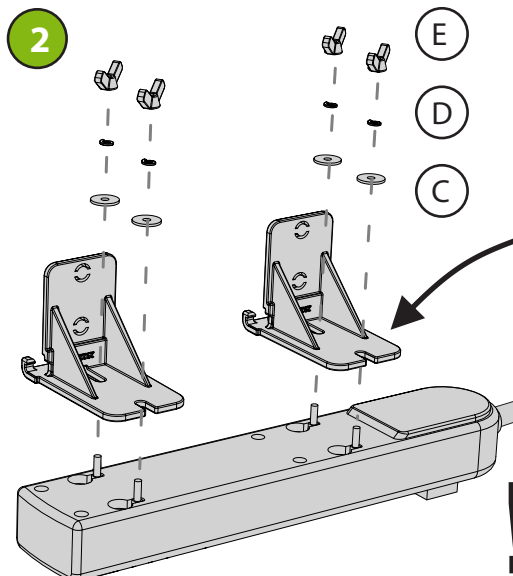
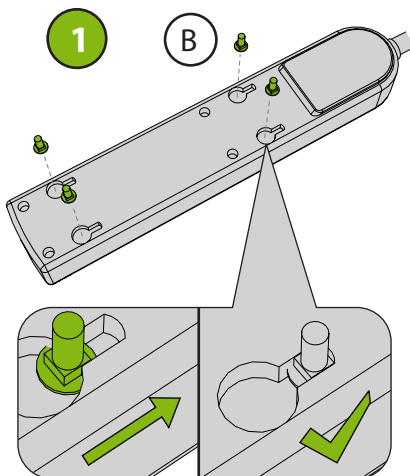


Power Strip Bracket
x2



Power Strip
x1

Install Carriage Bolts on Power Strip and Mount to Power Strip Brackets



! Hold bracket in place
while tightening hardware.
Tighten fully.

Power strip
cord end

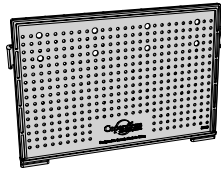
! Pay close attention to
orientation of power strip.



Keep your power strip upside
down as shown. This will make
the assembly easier!

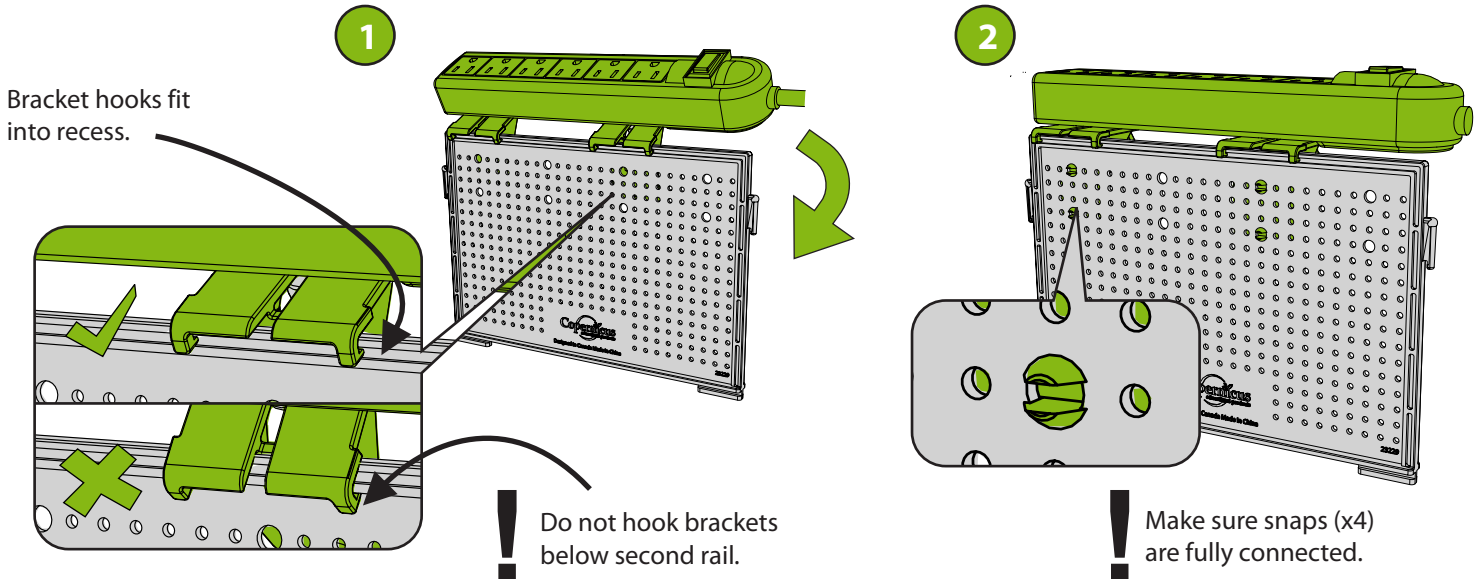
4

You will need: (Not to Scale)



Divider
x1

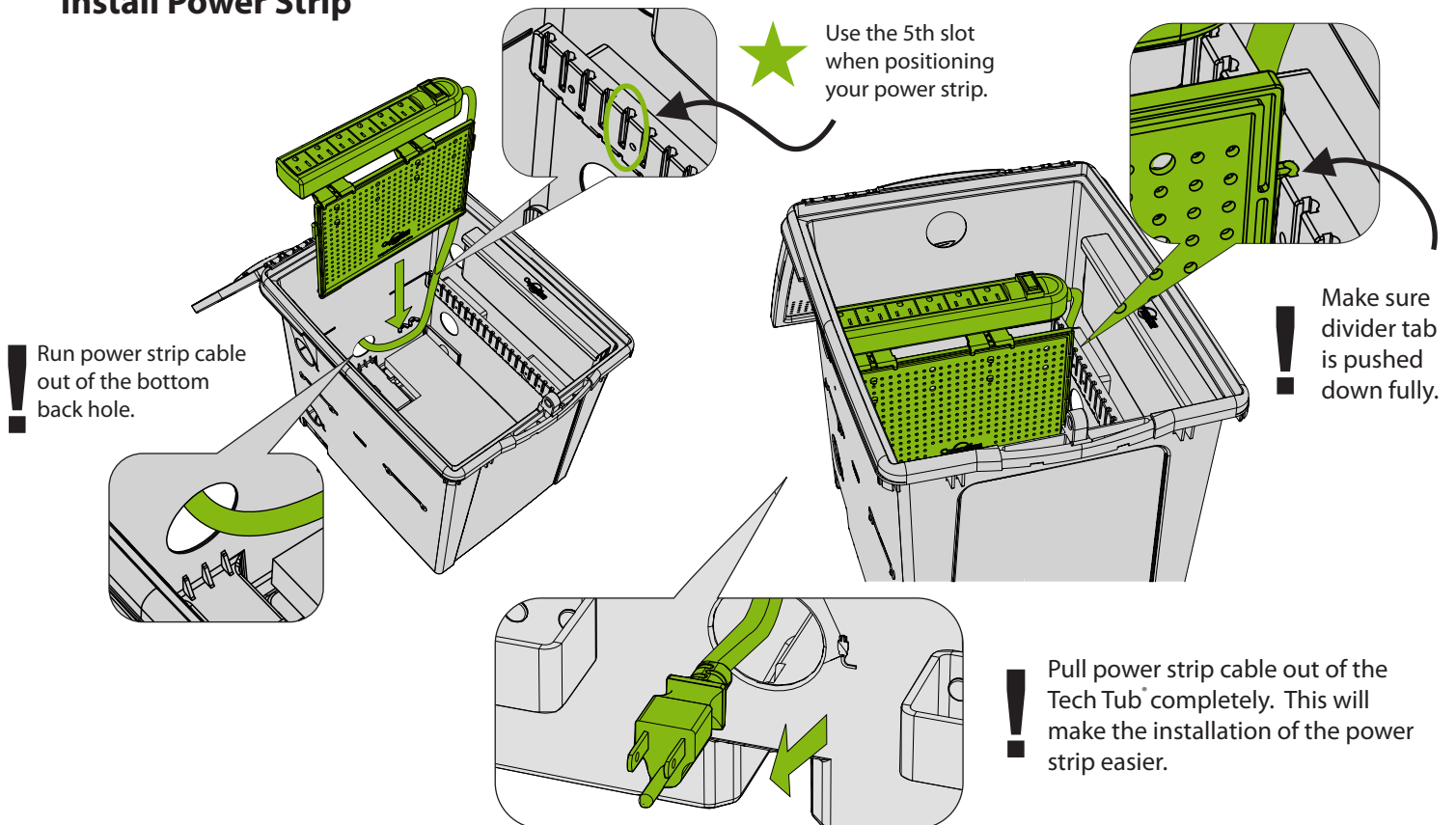
Assemble Power Strip on Divider



5

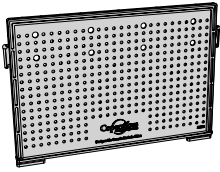
Actual Size:

Install Power Strip



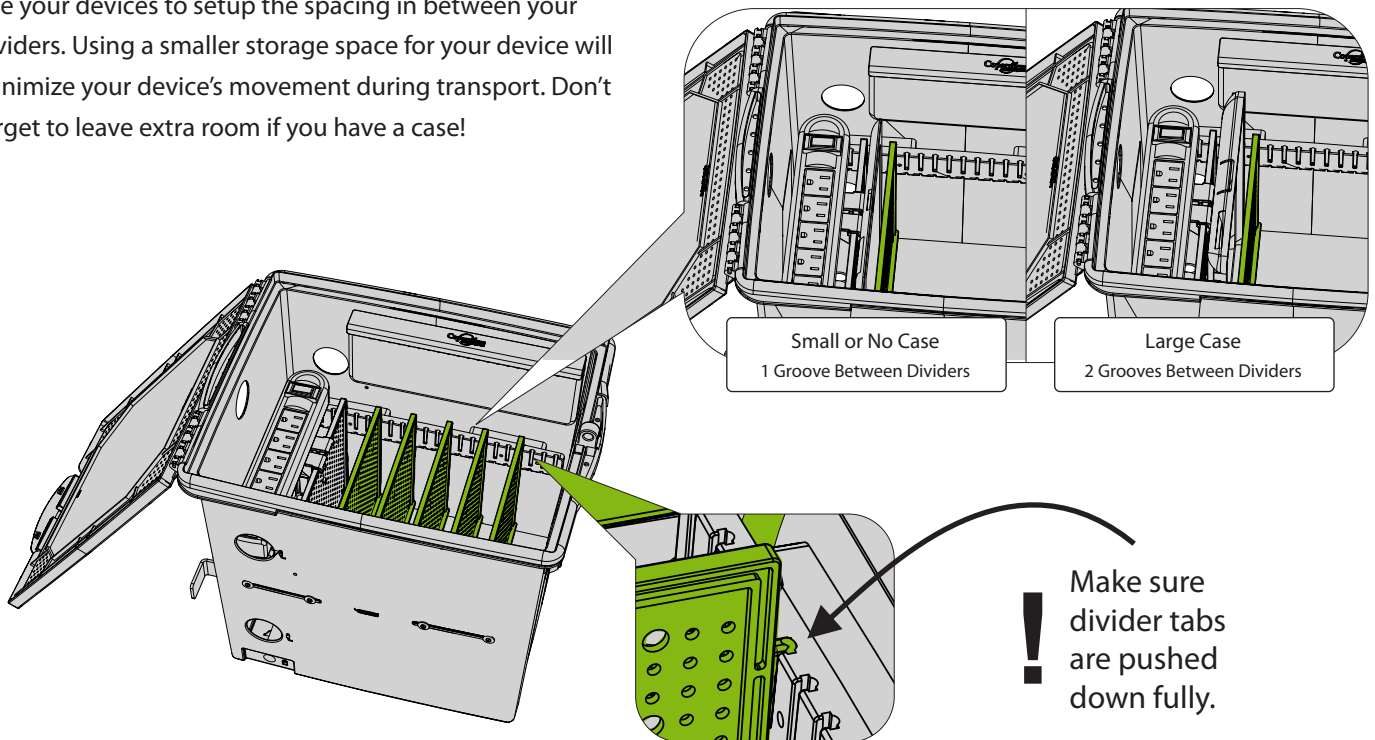
6

You will need: (Not to Scale)

Divider
x5

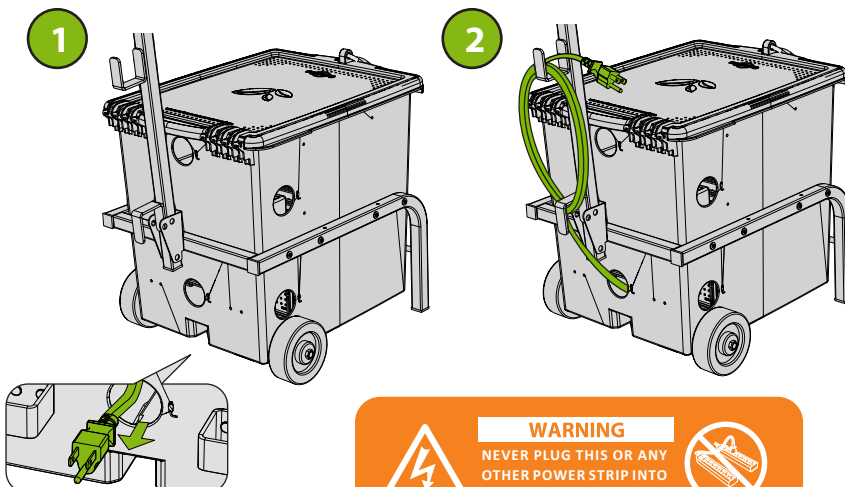
Install Dividers

Use your devices to setup the spacing in between your dividers. Using a smaller storage space for your device will minimize your device's movement during transport. Don't forget to leave extra room if you have a case!



7

Wrap Power Strip Cable



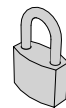
WARNING

NEVER PLUG THIS OR ANY
OTHER POWER STRIP INTO
ANOTHER POWER STRIP



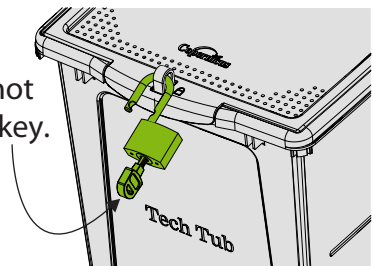
8

You will need: (Not to Scale)

Padlock
x1

Lock Lid with Padlock

Note:
Padlock will not
lock without key.

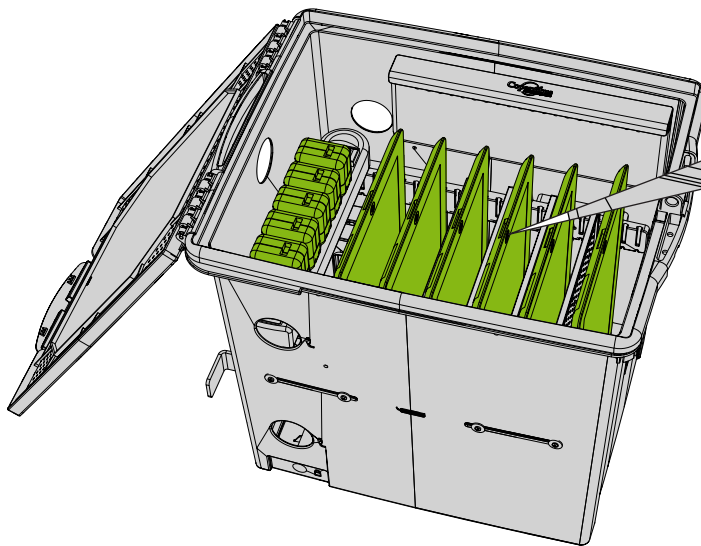




Cable Management

1

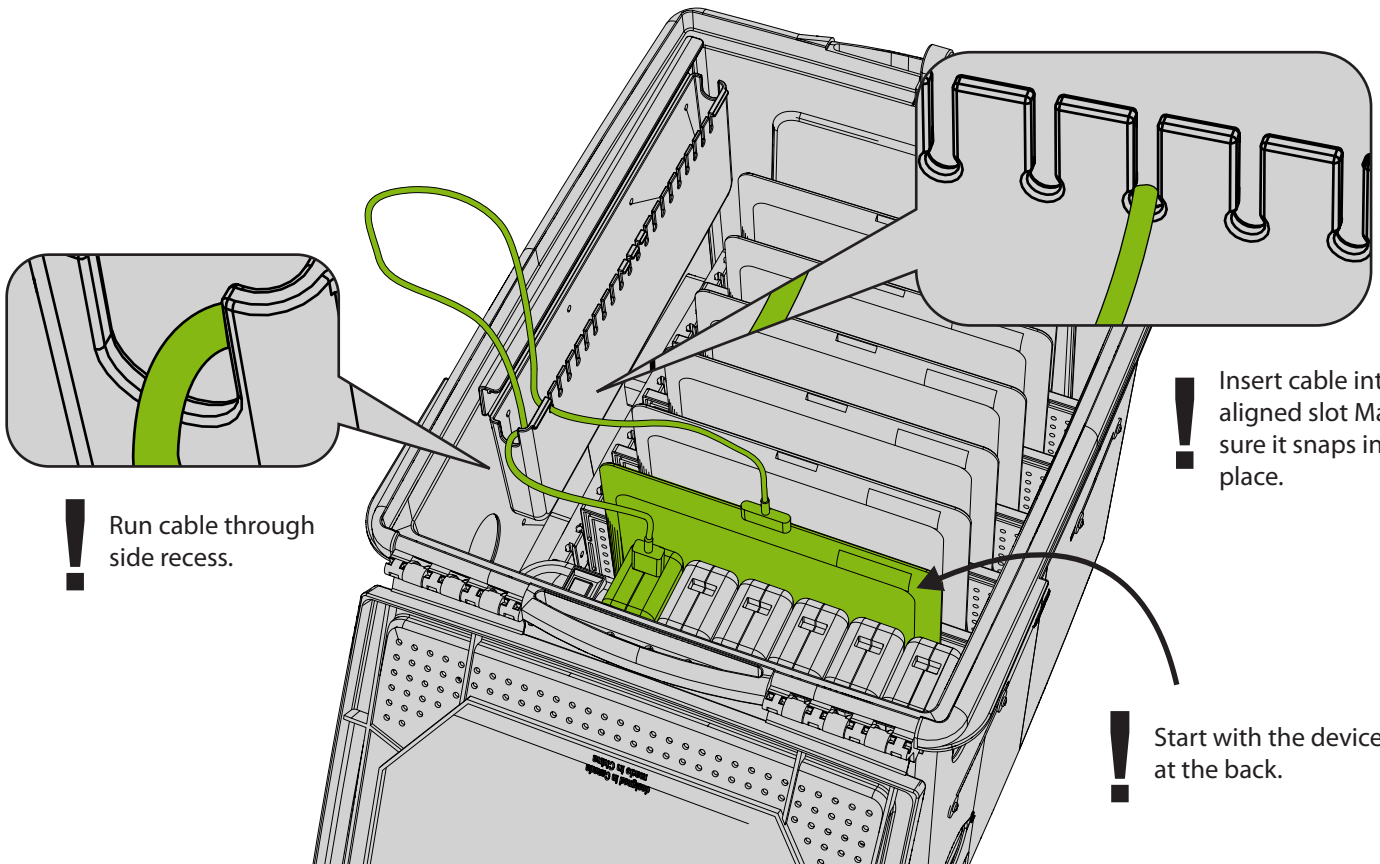
Arrange your Tech Tub® with all of your devices and adapters.



Charging port of device should be facing upwards or near the top.

2

Plug cable into power adapter and first device.



Run cable through side recess.



Insert cable into aligned slot. Make sure it snaps into place.



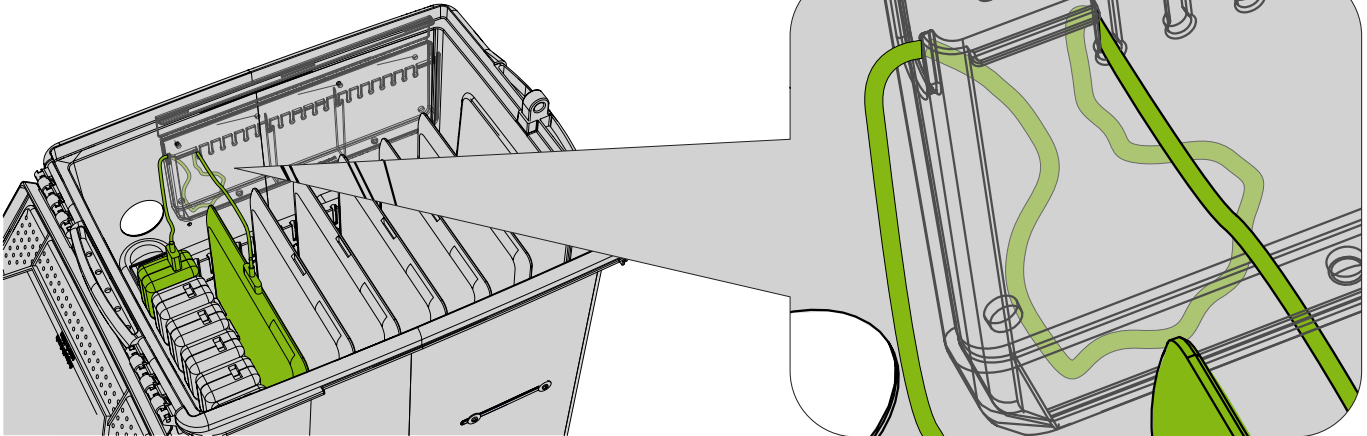
Start with the device at the back.



Cable Management

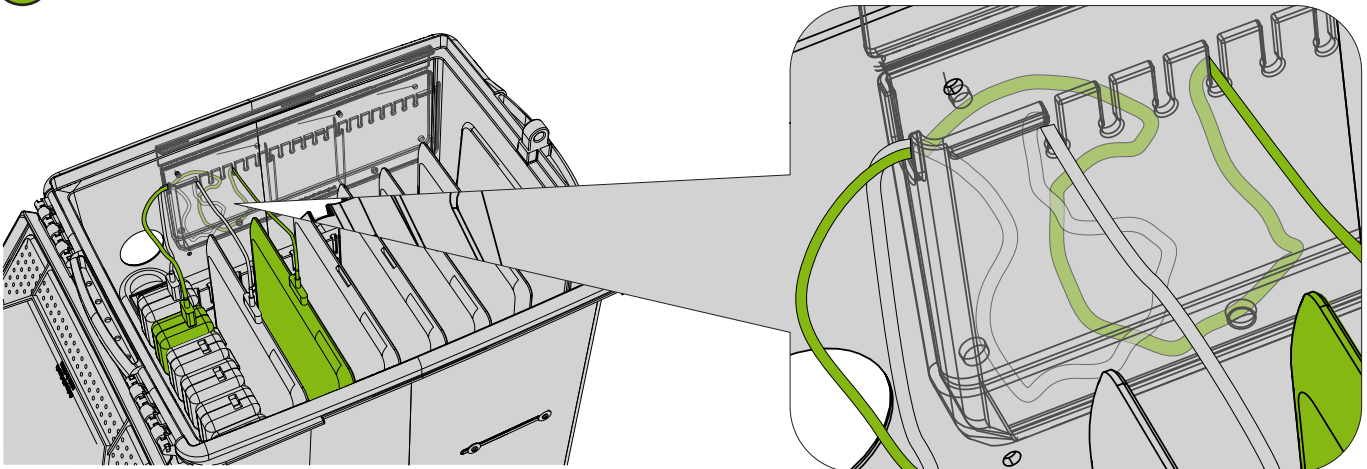
3

Store excess cable into Cable Management Pocket.



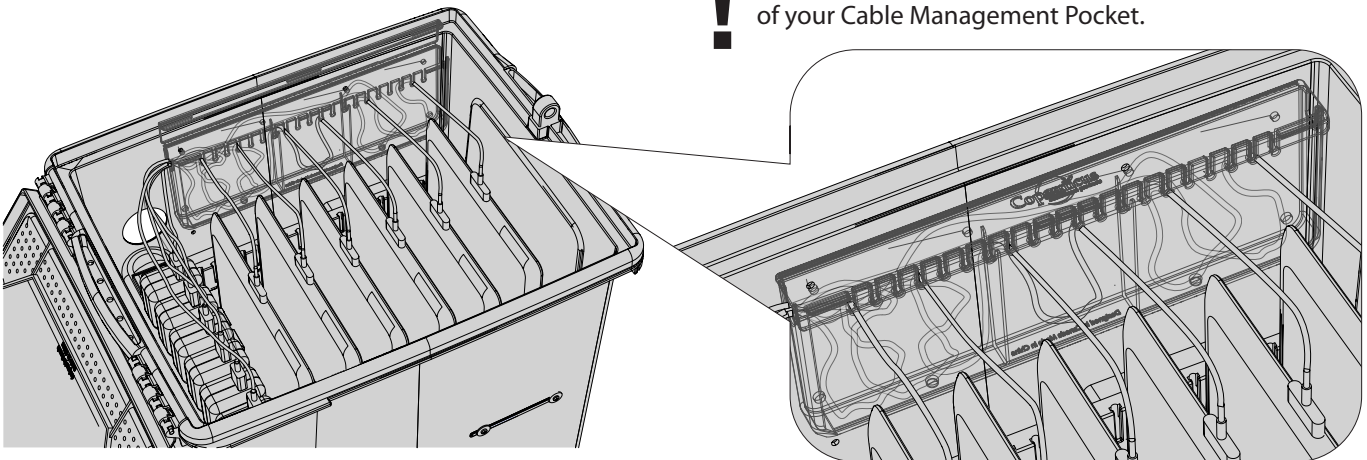
4

Repeat Steps 1-3 for the second device.



5

Repeat Steps 1-3 for the remaining devices.



Once you have your cables set up, close the lid of your Cable Management Pocket.



Tips for Use

Device Management

Keeping track of your devices can be made even easier by creating a sign-out program.

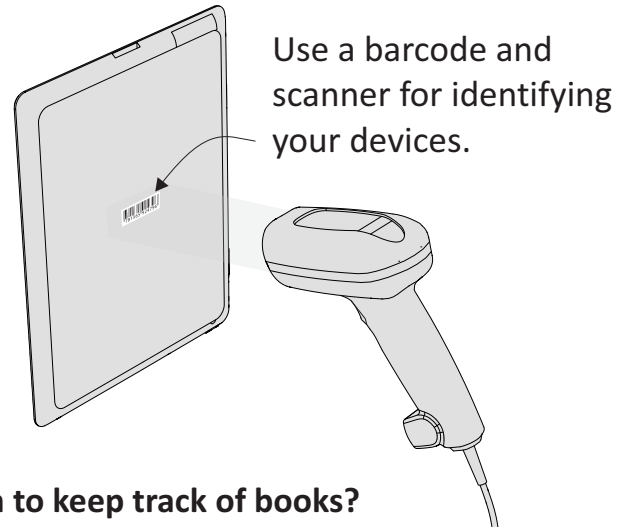
There are many automated software solutions available that make setting up and running a device check-out program very easy.

Here is a list of some companies and their products:

ResourceMate® - www.resourcemate.com

Neuton Data Systems - www.neuton.net

IntelliScanner - www.intelliscanner.com



**Does your school already use an automated system to keep track of books?
You could use this system to also keep track of your devices!**

Carrying your Tech Tub®

Use the Handles along the sides of the Tech Tub® for easy lifting and carrying.

