

Brand NEW sanitizing solutions for schools





Hand Sanitizer Stations

Pages 3-8



Hand Sanitizer Stands & Dispensers

Pages 9-10



Portable Sinks

Page 11-13



UV Sanitizing

Pages 14-17



Sanitizing classroom manipulatives & Tub Kits

Pages 18-19



Clear Room, Desk, Table & Floor Dividers

Page 20-22

What will schools need as they reopen?

Be ready for both the expected and unexpected.

As schools reopen around the globe, different test models are being used. Some are opting for staggered schedules, smaller class sizes or a mix of remote and in-person classrooms.

New hygiene protocols are also being implemented to prevent the spread of germs. Aside from daily school sanitizing required by school custodians, students and staff will need products that make it easier for routine cleaning of their hands and classroom tools. They will also need products to help reduce the sharing of items and physical barriers.

There's no one-size-fits-all approach, so we've designed a wide variety of products to help reduce the spread of germs and keep schools safe.

Tested and safe for *real* classroom environments

When it comes to students and educators returning to school, sanitizing classroom tools and hands will be a priority. Buying a generic off-the-shelf product isn't the safest solution.

Copernicus designs child-safe, flexible solutions specifically for rugged school environments suitable for multiple uses, in multiple locations.

▶ Child Lock Out feature for safety

Access to hand sanitizer is important but so is preventing students from draining the dispenser when nobody is looking, or worse, ingesting it. This safety feature is not found on generic hand sanitizer dispensers.

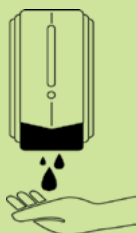


Dispenser accessible for use with lock out stored



Child lock out feature for safety in place - dispenser is inaccessible

Our Child Lock Out feature works with our no-touch dispenser and other **manual** dispensers. It can also be used to hold a disposable hand sanitizer pump if an automatic dispenser is not being used.



We tested our dispensers over **400,000** times.
That's a lot of clean hands!



Really tough, easy to clean and move around

Our tubs and frames have been tested with Caviwipes (medical grade disinfection wipes) and bleach diluted to 2:10.

Before they can go to market, our casters are stress-tested using our caster testing machine that repeatedly rolls them over obstacles while loaded down with weight.



The frames of our products are made from thick square steel tubing. This is the same gauge that industrial stainless steel kitchen sinks are built from. So it is fair to say that our frames can handle everything AND a portable sink! (see page 11)



We've Got Your Back Lifetime Warranty*

At Copernicus, we try to do things differently. We hope you never need to make a warranty claim, but if you do, we promise to explore every way possible to quickly fix it. It's that simple.

*The exceptions to our lifetime warranty coverage include:

- 1 year warranty on dispensers, UV Tech Tub® bulbs and electrical components
- 2 year warranty on portable sinks and clear panels
- 5 year warranty on whiteboards

Hand Sanitizer Stations & Carts

Easy access to hand sanitizer will be critical when schools reopen.

These convenient carts are designed specifically for schools (and messy kids), with child lock out safety features on the dispensers, large drip trays, paper towel holders and locking storage tubs.



Supports CDC guideline:

Hand Hygiene

If soap and water are not readily available, use hand sanitizer that contains at least 60% alcohol.

Signs and Messages

Post signs in highly visible locations such as school entrances that promote proper hand hygiene.

Recognize Signs and Symptoms

If feasible, conduct daily health checks (temperature screening) of staff and students.

NEW! Single Student Hand Sanitizer Station - Premium Model (SAN100)

This compact cart can be placed anywhere students enter the school, or in the classroom. Its size is low enough for small elementary students to easily access the dispenser (floor to bottom of dispenser is 28 ½").

Dimensions

51"H x 17"W x 24"D

Warranty

Lifetime

Please note:

- Fits any **manual** wall dispenser or add ours (HSD1)
- Dispenser sold separately
- Padlock not included, use a standard padlock
- Sanitizer not included

Optional add-on:

No-touch automatic dispensers

- Dispenser is refillable from bulk sanitizer jugs so there is no need to buy disposable refill cartridges
- Your choice of battery operated or with battery operated/power adapter (HSD1 or HSD2)
- See page 10 for more information



Magnetic board to post instructions and entry protocols



Paper towel dispenser on the back and 1 Small Open Tub on the back with lid to store extra supplies (thermometers, etc.)

Child lock out feature (see page 2 for more details)

Large drip tray to catch messy drips as students use dispenser

Sturdy metal frame that is easily wiped down

3" locking casters



Supports CDC guideline:

Hand Hygiene

If soap and water are not readily available, use hand sanitizer that contains at least 60% alcohol.

Signs and Messages

Post signs in highly visible locations such as school entrances that promote proper hand hygiene.

Recognize Signs and Symptoms

If feasible, conduct daily health checks (temperature screening) of staff and students.

NEW! Single Student Hand Sanitizer Station - Base Model (SAN101)

This more affordable base model provides the basics for a single hand sanitizing station for places where students enter the school, or in the classroom. Its size is low enough for small elementary students to easily access the dispenser (floor to bottom of dispenser is 28 ½").

Features:

- Sturdy metal frame is easily wiped down
- Child lock out feature (see page 2 for more details)
- Large drip tray to catch messy drips as students use dispenser
- Signage wire to post instructions and entry protocols
- 3" locking casters

Dimensions

51"H x 17"W x 24"D

Warranty

Lifetime

Please note:

- Fits any **manual** wall dispenser or add ours (HSD1)
- Dispenser sold separately
- Padlock not included, use a standard padlock
- Sanitizer not included



Optional add-on:

No-touch automatic dispensers

- Dispenser is refillable from bulk sanitizer jugs so there is no need to buy disposable refill cartridges
- Your choice of battery operated or with battery operated/power adapter (HSD1 or HSD2)
- See page 10 for more information



Supports CDC guideline:

Hand Hygiene

If soap and water are not readily available, use hand sanitizer that contains at least 60% alcohol.

Signs and Messages

Post signs in highly visible locations such as school entrances that promote proper hand hygiene.

NEW! Double Hand Sanitizer Station (SAN200)

This sturdy stand is ideal for static areas like building entrances. Its height makes it appropriate not only in a school setting, but also for businesses and public spaces. Post instructions, a welcome message or hours of operation to help visitors.

Features:

- Sturdy metal frame is easily wiped down
- Magnetic board to post instructions and entry protocols
- Floor to bottom of dispenser is 38 ¾"

Dimensions

56" H x 26" W x 22" D

Warranty

Lifetime

Please note:

- Fits any **manual** wall dispenser or add ours (HSD3)
- Dispenser sold separately
- Sanitizer not included
- Drip tray shown is only available with our dispenser

Optional add-on:

No-touch automatic dispensers

- Dispenser is refillable from bulk sanitizer jugs so there is no need to buy disposable refill cartridges
- See page 10 for more information



Shown with our dispenser with drip tray (HSD3)

Supports CDC guideline: Hand Hygiene

If soap and water are not readily available, use hand sanitizer that contains at least 60% alcohol.

NEW! Hand Sanitizer Stand (SAN001)

This straight-forward dispenser is ideal for areas that always have people coming and going, like the entrance to the main office, staff lunchroom or classrooms tight for space.

Features:

- Sturdy metal stand is easily wiped down
- Fits any **manual** wall dispenser or add ours (HSD3)
- Drip tray shown is only available with our dispenser
- Floor to bottom of dispenser is 40"

Dimensions

50" H x 15 3/4" W x 15 3/4" D

Warranty

Lifetime

Please note:

- Dispenser sold separately
- Sanitizer not included

Optional add-on:

No-touch automatic dispensers

- Dispenser is refillable from bulk sanitizer jugs so there is no need to buy disposable refill cartridges
- Your choice of battery operated or with battery operated/power adapter
- See page 10 for more information



Hand Sanitizer Stand (SAN001)
Shown with our dispenser with
drip tray (HSD3)

NEW! Chart Stand with Sanitizer Station (CS700-SAN)

This package includes our popular Deluxe Chart Stand and two no-touch automatic sanitizer dispensers. With lots of room to post instructions on the whiteboard, it creates a complete sanitizer station.

Features

- 1 Deluxe Chart Stand
- 2 No-touch automatic dispensers (HSD3)
- (battery operated). See page 10 for more details.
- 2 Mounting brackets to attach dispensers to the frame
- Use the double-sided whiteboard to post instructions or entry protocols
- Includes book ledge (not shown)

NEW! Dispenser and Bracket Kit only (CS700-AC)

Turn your existing Chart Stand into a sanitizer station! This kit includes two no-touch automatic dispensers and mounting brackets that easily attach to your existing Deluxe Chart Stand.

Warranty

Lifetime on chart stands and components,
lifetime on bracket kit, 1 year on dispensers

Please note:

- Sanitizer not included

When a mobile sanitizer stand isn't needed, dispensers can be easily removed and mounted to a wall and the Chart Stand can be used in the classroom as an easel.



Supports CDC guidelines:

Hand Hygiene

If soap and water are not readily available, use hand sanitizer that contains at least 60% alcohol.

Signs and Messages

Post signs in highly visible locations such as school entrances that promote proper hand hygiene.

Chart Stand with Sanitizer Station (CS700-SAN)
Shown in highest position

Supports CDC guideline: Hand Hygiene

If soap and water are not readily available, use hand sanitizer that contains at least 60% alcohol.

NEW! Wall-mounted Hand Sanitizer Dispenser (SAN003)

When space is not available for a stand, this wall-mounted dispenser can be installed on any wall surface. It includes a child lock out safety feature and one no-touch automatic dispenser (battery operated/power adapter).

Dimensions

10" H x 5" W x 5" D

Warranty

Lifetime on bracket and 1 year on dispenser

Please note:

- Padlock for lock out not included, use a standard padlock
- Sanitizer not included

Dispenser is refillable from bulk sanitizer jugs so there is no need to buy disposable refill cartridges. See page 10 for more information.



Made In Canada

(Wall-mount bracket)



Wall mount bracket

Includes 1 no-touch automatic dispenser
(battery operated/power adapter)

Child lock out feature that can be used
as a drip tray when unlocked

Supports CDC guideline: Hand Hygiene

If soap and water are not readily available, use hand sanitizer that contains at least 60% alcohol.

NEW! No-touch Automatic Hand Sanitizer Dispensers

Our no-touch automatic hand sanitizer dispensers help reduce the spread of infection and are designed to fit all our carts and stands, but are also available as a stand-alone item. Standard mounting hardware included.

Battery operated option - without drip tray (HSD1)

Battery/Power Adapter (HSD2)

Battery operated option - with drip tray (HSD3)

Uses 6 AA batteries which are good for 30,000 uses (Batteries not included)

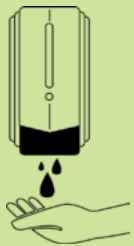
- Holds 1 quart/1.2 litres of hand sanitizer

Dimensions

10" H x 5" W x 5" D

Warranty

1 year



We tested our dispensers over **400,000** times. That's a lot of clean hands!



Battery operated option



Dispenser is refillable from bulk sanitizer jugs so there is no need to buy disposable refill cartridges



Dispenser without drip tray (HSD1 or HSD2)



Dispenser with drip tray (HSD3)

Portable Sinks

Handwashing is the most effective way to kill germs.

When running water isn't available in the classroom (or outdoors), these lightweight, portable sinks can be situated where needed (store inside).

Unlike many other portable sinks, ours has a manual pump that does not need to be located near an electrical outlet.



Supports CDC guideline:

Hand Hygiene

Teach and reinforce handwashing with soap and water for at least 20 seconds.

Signs and Messages

Post signs in highly visible locations such as school entrances that promote proper hand hygiene.

NEW! Portable Sink Premium Models

Two models available: one for small students and one for older grades and adults. Both with a 5 gallon capacity (provides approximately 50-60 hand washes). Base models also available (see page 13).

SNK100 Portable Sink PreK-5 Premium Model

SNK200 Portable Sink Grades 6+ Premium Model

Dimensions

PreK-5

Counter height – floor to counter 28" H

Overall – 47" H x 34" W x 19" D

Grades 6+

Counter height – floor to counter 34 ½" H

Overall – 53" H x 34" W x 19" D

Warranty

2 year



Made In Canada

Ships assembled!

Large magnetic board to post instructions

Manual paper towel dispenser

Hands-free soap dispenser

Stainless steel sink with faucet

Stainless steel counter surface



Grades 6+ Premium Model

Large 4" locking casters

Easy-to-use manual pump
(requires no electricity)



PreK-5 Premium Model

Rear panel unhooks for access to a 5 gallon jug for clean water and a 6 gallon jug for waste water (provides approximately 50-60 hand washes)

Side window to view water levels in jugs

Supports CDC guideline:

Hand Hygiene

Teach and reinforce handwashing with soap and water for at least 20 seconds.

Signs and Messages

Post signs in highly visible locations such as school entrances that promote proper hand hygiene.

NEW! Portable Sink Base Models

The base model has the same features as the premium model (see page 12) except it has an area to hang signage and no soap or paper towel dispensers.

Two models available: one for small students and one for older grades and adults. Both with a 5 gallon capacity.

SNK101 Portable Sink PreK-5 Base Model

SNK201 Portable Sink Grades 6+ Base Model

Dimensions

PreK-5

Counter height – floor to counter 28" H

Overall – 47" H x 34" W x 19" D

Grades 6+

Counter height – floor to counter 34 ½" H

Overall – 53" H x 34" W x 19" D

NEW! Portable Sink Add-ons

If a teacher anticipates the need for more washes, or a faucet for refilling isn't close by, having these extra tanks on a dolly, ready to go, is convenient.

Portable Sink Tank Kit with Dolly (SNK300)

This dolly option makes it easier to move filled tanks around a school and two of the 3" casters lock, so it can be safely stationed next to the portable sink ready for use.

Warranty on all models

2 year



Sink Tank Kit with Dolly (SNK300)



Grade 6+ Base Model



Rear panel unhooks for access to a 5 gallon jug for clean water and a 6 gallon jug for waste water (provides approximately 50-60 hand washes)



h Tub²

CapSentry



NEW!



UV Tech Tub[®]
Sanitizes in one minute

Supports CDC guideline: Cleaning & Disinfecting

Clean and disinfect frequently touched surfaces and shared objects between uses.

NEW! UV Tech Tub®

These days, cleaning devices is as important as charging them. The UV Tech Tub® is here to help with the necessary sanitizing of devices required to keep classrooms as germ-free as possible. The UV Tech Tub® is designed with safety, sanitizing effectiveness and ease of use as top priorities.

In one minute, the UV Tech Tub® sanitizes bacteria and viruses commonly found in schools. The large chamber can also sanitize Chromebook™ keyboards and screens (when open), VR headsets, headphones, robotics and other commonly used classroom items.

Tech Tub UV sanitizes to a 99.99% kill in just one minute*, reducing the risk of common hospital and classroom viruses and bacteria



Top compartment holds package of 12 medical grade testing cards to check UVC level (monthly check is recommended)

Bulbs emit proper wavelength level required to sanitize and are easy to replace by educators. Bulbs are rated for 11,000 hours of use.**

360 degrees of UVC irradiance to maximize sanitizing with 4 bulbs and reflective interior

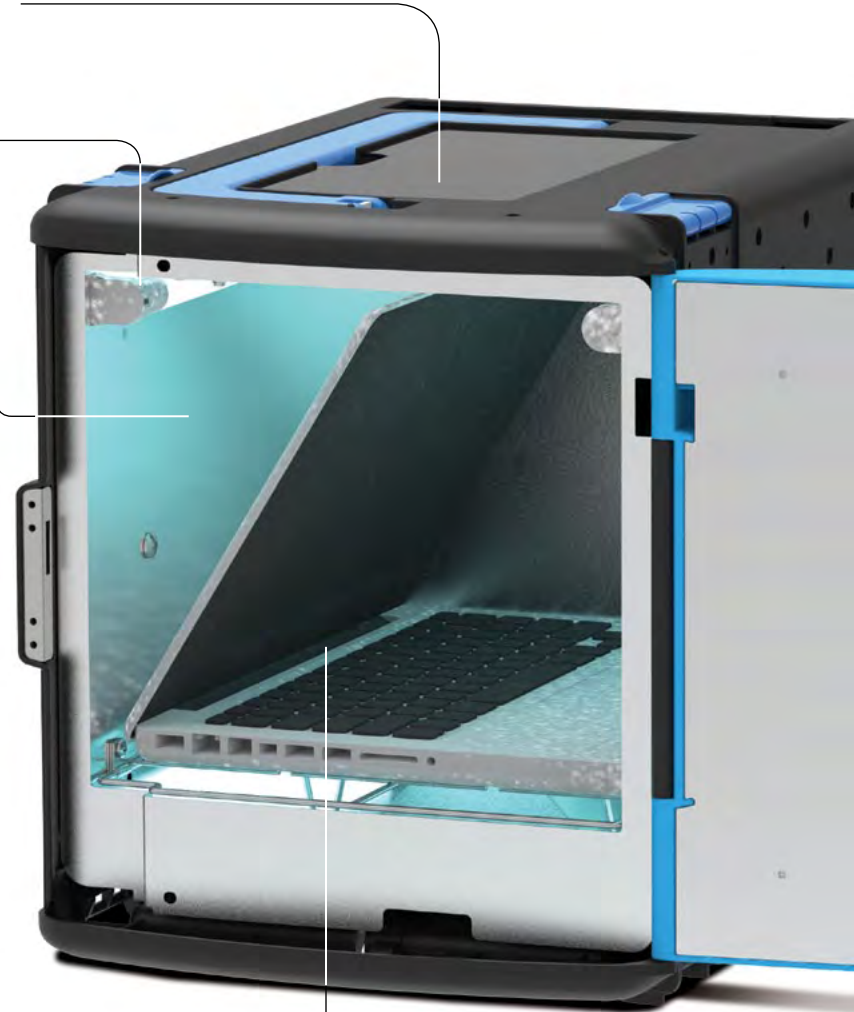
Enclosed sanitizing chamber (no UVC exposure to user)

The UV bulbs turn on only when the door is closed securely and start button is pushed



Large enough to hold open laptops to sanitize the most germ-y surfaces: the screen and keyboard

UVC filtering window (to check the bulbs are working)



Watch these informative UV Tech Tub videos:

- ▶ • Introducing the UV Tech Tub®
- ▶ • UV Tech Tub® vs. Wipes
- ▶ • Testing the shatterproof bulbs
- ▶ • How to use the dosimeter to test the bulbs UVC effectiveness

NEW! The UV Tech Tub® family of products

UV Tech Tub® (FTTUV)

Dimensions

Tub: 13" H x 11 ¾" W x 17" D

With Handle up: 16 ¾" H x 11 ¾" W x 17"

Inside chamber: 8 ½" H x 9 ½" x 12 ¾" D

Tech Tub²® Trolley with UV Tub – charges 6 devices (FTT706-UV)

Dimensions

36 ¾" H x 14 ¾" W x 19 ½" D

Tech Tub²® Trolley with UV Tub – charges 10 devices (FTT2010-UV)

Tech Tub²® Trolley with UV Tub – USB charges and syncs 10 iPads® (FTT2010-USB-UV)

Dimensions

41" H x 14 ¾" W x 19 ½" D

Tech Tub²® Modular Cart with UV Tub – charges 18 devices (FTT718-UV)

Tech Tub²® Modular Cart with UV Tub – USB charges and syncs 18 iPads® (FTT718-USB-UV)

Dimensions

43" H x 34" W x 19" D

Tech Tub²® Modular Cart with UV Tub – charges 26 devices (FTT726-UV)

Tech Tub²® Modular Cart with UV Tub – USB charges and syncs 26 iPads® (FTT726-USB-UV)

Dimensions

50" H x 34" W x 19" D

Warranty for all models

Lifetime tubs and frames

1 year warranty on UV bulbs and electrical components

- UL/UL-C Certified***
- Patented

Our popular Tech Tub²® Trolleys and Modular Carts now include options which have a UV Tech Tub® to create a complete device charging, storing and sanitizing solution.

The green tubs charge different quantities of Chromebooks™, iPads® and other tablets and the blue tubs sanitize them. (See page 15 for more details.)



Tub

FTTUV

Trolleys

FTT706-UV
Charges

6

Devices

FTT2010-UV
Charges

10

Devices

Modular Carts

FTT718-UV
Charges

18

Devices

FTT726-UV
Charges

26

Devices

See how the features of the new UV Tech Tub® compare

UV safety in the classroom		
Feature	UV Tech Tub®	Considerations with other available options
Fully enclosed sanitizing chamber (no UVC exposure to users)	✓	Wand-style solutions are not enclosed, which can expose the user to UVC radiation
UL tested and approved	✓ UL/UL-C Certified. UL testing verifies no harmful radiation escapes the chamber and critical safety parts are tested to 100,000 uses.	Depends on model UL will not certify a wand-style solution for safety reasons
Automatic safety switches	✓ The UV bulbs turn on only when the door is latched securely closed and start button is pushed	Depends on model
UVC filtering window (to check bulbs are working)	✓ Lights on the door also indicate UVC sanitizing status	Depends on model
UVC bulbs are shatterproof	✓ UVC bulbs have shatterproof sleeves to prevent glass and gases from escaping if a bulb is broken	Depends on model
Ease of use		
Cleans inside and outside of Chromebooks™ and laptops	✓ Chromebooks can be sanitized while open, cleaning the outside and the gummy screen and keyboard	Depends on model. Some do not have space for an open Chromebook™ and only clean the outside (such as large UV carts)
Sanitizes tablets and Chromebooks™	✓ Check our compatibility chart for brands and specs	Many models only fit tablets
Sanitizes other classroom objects	✓ Large chamber fits VR headsets, headphones, robotics and other high-tech and low-tech classroom items	Depends on model. Many only fit tablets or closed Chromebooks™ (flat objects)
UVC bulbs are easy to replace	✓ Easy to replace by educators Bulbs available from Copernicus	Some models require a technician to change the bulbs
Compact	✓ Small footprint and can clip onto existing Tech Tub2® Trolleys and Modular Carts	Bulky carts and cabinets require more space in the classroom
Sanitizing time is quick and effective	✓ One minute to sanitize to a 99.99% kill*	Depends on model. Be wary of wands and flashlight models and those that claim sanitizing in seconds
Sanitizing effectiveness		
Bulbs*** emit proper wavelength level required to sanitize	✓ Bulbs emit UVC radiation at a wavelength of 254nm which is proven to be effective at eliminating bacteria, viruses and fungi	Depends on model
Lab tested for school-specific viruses and bacteria	✓ Sanitizes to a 99.99% kill in just one minute reducing the risk of common hospital and classroom viruses and bacteria	Be wary of products that do not state their testing results. Many products are tested for common viruses and bacteria found in hospitals, not schools.
Medical grade testing cards to check effective germicidal level of UVC	✓ Includes 12 test cards (monthly checks are recommended). Additional cards can be purchased from Copernicus	Most models indicate the bulbs are on or off, but not the dosage of UVC
360 degrees of UVC irradiance	✓ Bulbs are arranged to provide complete 360 irradiance and the highly reflective polished aluminum chamber maximizes effectiveness of the UVC bulbs	Many products only have UVC coming from one direction, creating shadowed areas where the UVC doesn't reach



360 degrees of UVC radiation to maximize sanitizing with 4 bulbs and reflective interior

Supports CDC guideline:
Cleaning & Disinfecting

Clean and disinfect frequently touched surfaces
and shared objects between uses.

NEW! Manipulative Cleaning Tub Kit (SAN-TUB1)

When students return, shared manipulatives
like Lego®, tan gram shapes, counters, etc. will
need a fast and easy way to be cleaned after use.

This simple but useful tub kit includes two
of our durable Large Open Tubs and a new
mesh-bottomed tub for a complete washing
and drying set.

Features:

- 1 Mesh-bottomed tub
- 2 Large Open Tubs - 1 for washing and 1 for drying
- Handles on both sides
- Blue Tubs are made of 25% recycled plastic

NEW! Manipulative Cleaning Tub (SAN-CC4068)

Don't need the whole kit? The Clear Mesh-bottomed
Tub is available. Use on its own or with existing Large
Open Tubs already in the classroom.

Dimension of one tub

6" H x 12 1/2" W x 15 3/4" D

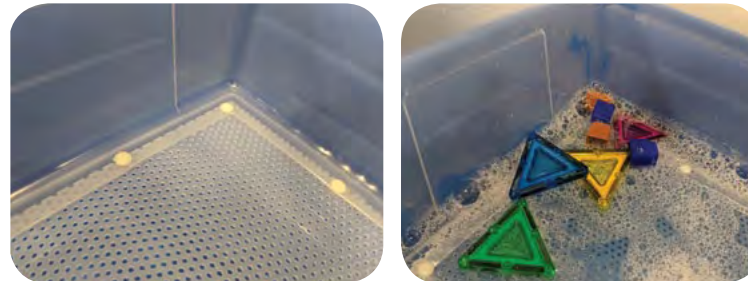
Warranty

Lifetime

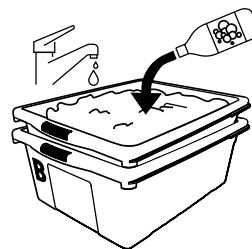
Our tubs have been tested with Caviwipes
(medical grade disinfection wipes)
and bleach diluted to 2:10



Kit shown (SAN-TUB1)

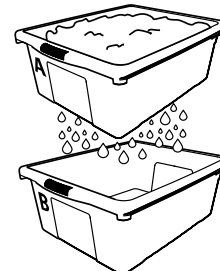


How the kit works:



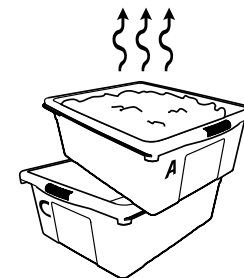
Step 1

Stack clear mesh tub inside the
blue tub, add soap, water and
manipulatives.



Step 2

Once clean, drain, rinse with
water in sink and drain.



Step 3

Set on second blue
tub to dry.

Supports CDC guideline: Shared Objects

Keep each child's belongings separated from others' and in individually labeled containers.

NEW! Student's Personal Tub Kits

When students return to school, keeping personal items stored in one place will help cut down on them sharing items and reduce the spread of germs.

This Tub Kit is small enough to sit on a desk and deep enough to hold everything needed without spilling. Available individually or in packs of 10 or 30.

Features:

- 1 Small Open Tub
- 1 Tiny Tub
- 1 Adhesive name pocket
- 1 Hanging bag

Student's Personal Tub Kit (KT-1-B)

Student's Personal Tub Kit - pack of 10 (KT-10-B)

Student's Personal Tub Kit - pack of 30 (KT-30-B)

Dimensions

6" H x 6 1/2" W x 15 3/4" D

Warranty

Lifetime

NEW! Personal Storage Tub Cart

This cart makes it easy for employees or students to pick up their PPE, cleaning supplies, etc. each day. At the end of the day, they can be returned to the cart for easy replenishment of supplies.

Personal Storage Tub Cart Base Model (BB-PSTC)

Features:

- Sturdy frame that is easily wiped down
- 18 Small Open Tubs (each tub holds 5lbs)
- Add your own label to the tubs (labels not included)
- Tubs are made with 25% recycled material
- 2" locking casters (for moving within a space)

Dimensions

Cart: 36 1/2" H x 40 1/2" W x 15 3/4" D

Tubs: 6" H x 6 1/2" W x 15 3/4" D

Warranty

Lifetime

Our tubs have been tested with Caviwipes (medical grade disinfection wipes) and bleach diluted to 2:10



Supports CDC guideline: Physical Barriers

Install physical barriers, such as sneeze guards and partitions, particularly in areas where it's difficult to remain at least 6 feet apart.

NEW! Clear Dry-Erase Desk & Table Divider Kits

As schools reopen, the use of physical barriers between students can help to prevent the spread of germs, particularly when physical distancing isn't possible. These flexible, modular panels provide a clear, dry-erase divider that can be customized to suit different configurations on desks and tables as well as the floor (see page 21 for more options).

These surface-hardened acrylic, 1/4" thick panels are very durable and will withstand extended classroom use. They provide an unobtrusive barrier which allows students to make eye contact and socialize, creating a more normal classroom experience with each other and their teacher.

X-Shaped Clear Dry-Erase Divider Kit (DIV-X)

- Four 1/4" clear surface-hardened acrylic, dry-erase panels with rounded corners
- Durable tool-free knob fastener
- Two non-slip feet on each panel
- Fits 48" tables (round, octagon, square)
- Hang opaque paper and use as a privacy shield during testing

U-Shaped Clear Dry-Erase Divider Kit (DIV-U)

- The same features as the DIV-X but with three dry-erase panels and fits 20" x 26" (or larger) tables and desks

L-Shaped Clear Dry-Erase Divider Kit (DIV-L)

- The same features as the DIV-X but with two dry-erase panels and fits on 18" x 24" (or larger) tables and desks up to three fit on kidney-shaped tables (72" x 28")

Dimensions

Each panel measures: 24" x 24"

Warranty

2 year on clear panels



X-Shaped fits 48" rectangular, square or octagon tables (DIV-X)



U-Shaped can be used for group tables or student desks (DIV-U)



V-Shaped can be used for group tables or student desks (DIV-V)

To see more ways to configure these dividers, please visit www.copernicused.com

Supports CDC guideline: Physical Barriers

Install physical barriers, such as sneeze guards and partitions, particularly in areas where it's difficult to remain at least 6 feet apart.

NEW! Clear Dry-Erase Floor Divider (DIV-FLR)

This clear, dry-erase panel allows small children to play together, but apart, on the floor while maintaining a safe physical barrier. It can easily be moved anywhere needed in the classroom or daycare.

This surface-hardened acrylic, 1/4" thick panel is very durable and will withstand extended classroom use. It provides an unobtrusive barrier which allows students to make eye contact and socialize, creating a more normal classroom experience with each other and their teacher.

Features

- Made of 1/4" clear surfaced-hardened dry-erase acrylic panel
- Two metal feet to support the panel on any type of flooring

Dimensions

36"H x 38"W

Warranty

2 year on clear panels



The Floor Divider's sturdy feet sit on any type of flooring (DIV-FLR)



Can also be used in reception areas

Supports CDC guideline: Physical Barriers

Install physical barriers, such as sneeze guards and partitions, particularly in areas where it's difficult to remain at least 6 feet apart.

NEW! Clear Dry-Erase Room Dividers

These mobile clear room dividers can move anywhere needed to provide a see-through barrier between students or employees and the acrylic surface is dry-erase making them even more useful.

When a divider is no longer needed simply hang graph, chart paper or fill-in-the-blank activities on the S-hooks and write on the clear acrylic surface with dry-erase markers. Hang a green paper to create a green screen backdrop for stop animation and video production.

Clear Dry-Erase Chart Stand (CS700-CLR)

- 1/4" clear surfaced-hardened acrylic dry-erase surface (23 1/2" wide)
- Sturdy metal stand is easily wiped down
- Board height is adjustable upon assembly
- Safety Cap™ premium book ledge that locks into multiple positions
- Includes 2 Open Tubs that can store up to 10lbs of supplies each
- Snap-on chart hooks
- 2" twin wheel locking casters

Dimensions

50" - 69 1/2" H x 28" W x 27" D

Warranty

Lifetime on easel components
2 year on clear panel

Clear Dry-Erase Single Room Divider (CS7-CLR)

- 1/4" clear surfaced-hardened dry-erase acrylic divider (23 1/2" wide)
- Sturdy metal stand is easily wiped down
- Board height is adjustable upon assembly
- 2 S-hooks
- 2" twin wheel locking casters

Dimensions

50" - 69 1/2" H x 28" W x 27" D

Warranty

Lifetime on frame components
2 year on clear panel

Clear Dry-Erase Wide Room Divider (CS7-CLR-DBL)

- 1/4" clear surfaced-hardened dry-erase acrylic divider (47" wide)
- Sturdy metal stand is easily wiped down
- Board height is adjustable upon assembly
- 2 S-hooks
- 2" twin wheel locking casters

Dimensions

50" - 69 1/2" H x 53 1/2" W x 27" D

Warranty

Lifetime on frame components
2 year on clear panel



Clear Dry-Erase Room Divider Chart Stand (CS700-CLR)



Hang chart paper on the hooks and write on the dry-erase acrylic



Clear Dry-Erase Single Room Divider (CS7-CLR)



Clear Dry-Erase Wide Room Divider (CS7-CLR-DBL)



As a certified B Corp™, we are part of a community of like-minded businesses that want to use business as a force for good. We want to redefine what a successful business is by being directed and shaped through a social and environmental conscience.

Canada
8194 County Road 109, R.R. #3, Arthur, ON N0G 1A0

USA
Box 248, Buffalo, NY 14225

e: info@copernicused.com w: www.copernicused.com
t: 1 800 267 8494 or 519 848 3664 f: 1 519 848 5516

Copernicus reserves the right to change or modify pricing and products specifications with or without prior notification. Illustrations and descriptions may not be exactly as shown. No part may be reproduced by any means without prior authorization of Copernicus Educational Products Inc. All rights reserved. 2020*

Printed in Canada

SAN-06-2020

*Kill rate based on third-party biological lab testing (BSL-2 certified facility). A 99.99% kill is achieved on most of the viruses and bacteria that were tested.

**Phillips brand bulbs are easily replaced and available from Copernicus. Bulb hours may vary based on frequency of use.

*** The UV Tech Tub can be attached to trolleys with other UV Tech Tubs and Tech Tub2's for easy transportation and storage. Before operating the UV Tech Tub, remove it from the trolley and place on a surface that is at least 30" above the floor. Do not place the UV Tech Tub on the floor. This is to prevent accidental collisions that can cause damage or injury from impact and tip over. The same applies if you remove your UV Tech Tub from the Modular Cart, do not place the UV Tech Tub on the floor.