

TEC600

# Tech Tub®



## Assembly Guide

TEC600\_2017\_A

Check out our other products online at  
[www.copernicused.com](http://www.copernicused.com)

For assistance, please contact us:

**1-800-267-8494**

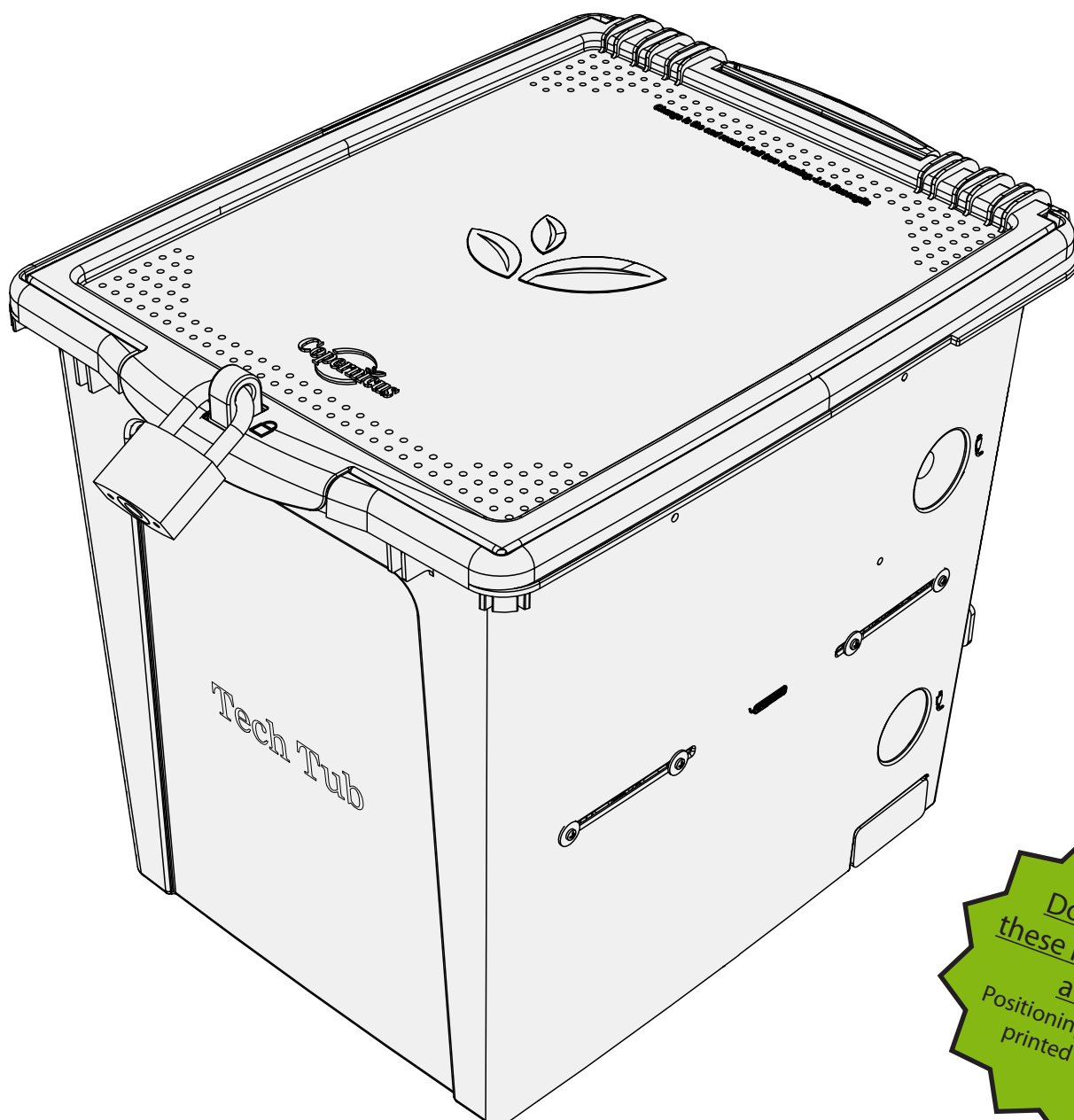
Email [info@copernicused.com](mailto:info@copernicused.com)

Have your packing slip ready for reference

## WARNING



- This product is meant to be assembled by an adult.
- In its unassembled state, small parts present a hazard.
- To be used under direct supervision of an adult.



**Don't throw  
these instructions  
away!**  
Positioning template  
printed inside!



**Please Recycle**

**Assembly Guide****TEC600\_2017\_A**

Check out our other products online at  
[www.copernicused.com](http://www.copernicused.com)

For assistance, please contact us:

**1-800-267-8494**

**Email [info@copernicused.com](mailto:info@copernicused.com)**

**Have your packing slip ready for reference**

Dear Educator,

Thank you for purchasing one of our products. I hope that the Tech Tub® is useful in your classroom.

If you have any questions, concerns, or ideas please contact us by telephone at 1-800-267-8494 or email at [info@copernicused.com](mailto:info@copernicused.com).

Enjoy using your new product and happy teaching.

*Jim Phillips*  
 Chief Cook and Bottle Washer

We do not inherit the  
 earth from our ancestors,  
 we borrow it from our  
 children.

NORTH AMERICAN

PROVERB

Change is the end result  
 of all true learning.

LEO BUSCAGLIA

What you leave behind is  
 not what is engraved in  
 stone monuments, but  
 what is woven into the  
 lives of others.

PERICLES

Education is the most  
 powerful weapon which  
 you can use to change the  
 world.

NELSON MANDELA

**Validate Your Warranty**

To validate your warranty, submit the ON-LINE form at [www.copernicused.com](http://www.copernicused.com)

**Enter a draw to win a Copernicus Product for your classroom at the same time!**



# Warning! Hazard Risks!

Please read the warnings below for important safety information regarding your product. Failure to read these warnings or to follow the instructions below could result in personal injury or damage to your product that could void your warranty.



Small  
Parts

In its unassembled state, this product contains parts that can be hazardous to small children. This product should be assembled by an adult.



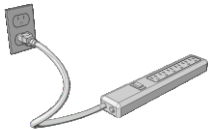
Adult  
Supervision

This product is to be used under the supervision of an adult.



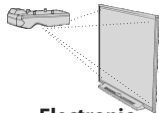
Indoor Use  
Only

This product is intended for indoor use only. To reduce the risk of fire or electric shock, do not expose this product to rain or moisture. The internal components are not sealed from the environment.



Power Strip  
Specifications

Read your power strip electrical specifications. Only plug in devices that are approved for use with this power strip. Connect the supplied power strip directly to a wall outlet. **Do not connect to another power strip or use an extension cord.** Unplug when not in use. **Do not leave this product plugged in for more than 72 consecutive hours.** Turn off power strip before unplugging.



Electronic  
Equipment

Read the electrical specifications of any electronic equipment you are using with your Copernicus products. Failure to read these specifications and follow their instructions could result in damage to your equipment or personal injury.



Cable Trip  
Hazard

Ensure that any cables extending across the floor to your product are properly bundled and marked to avoid tripping or falling which may lead to personal injury.



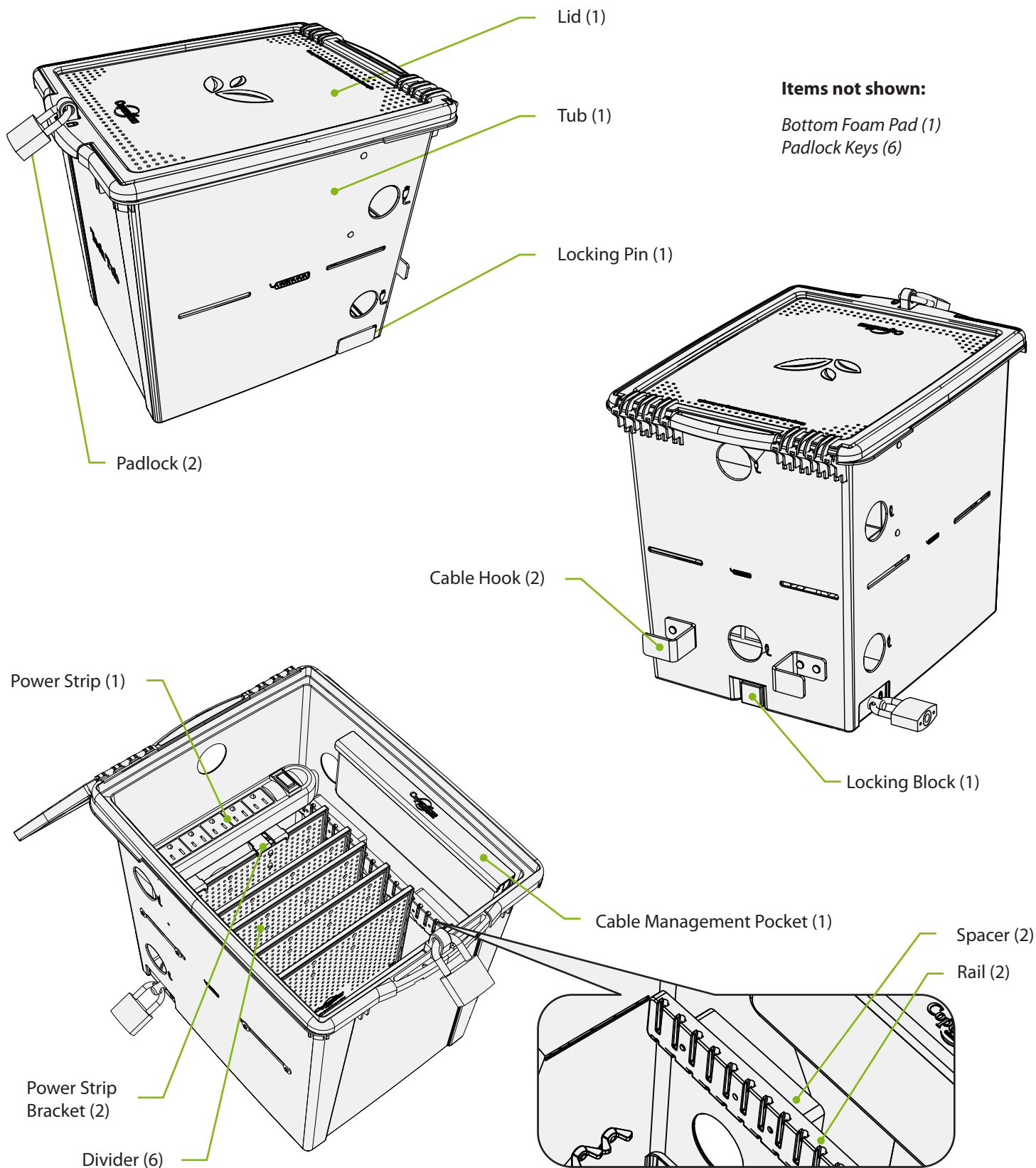
Electrical Shock

Do not install or use the electrical components of this unit during a lightning storm.



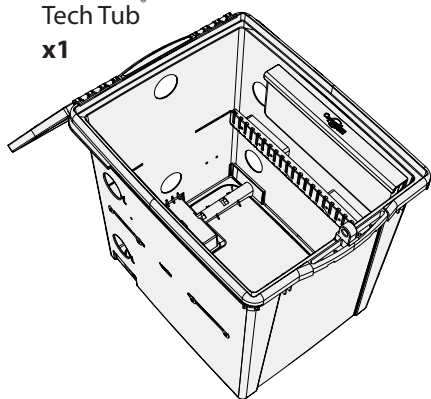
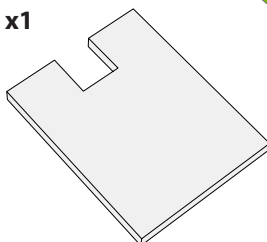
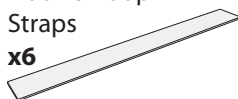
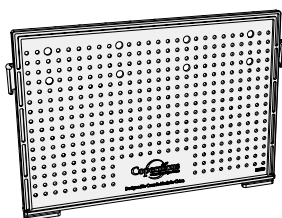
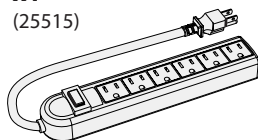
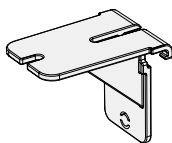
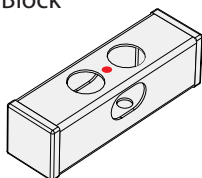
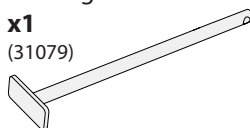
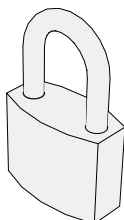
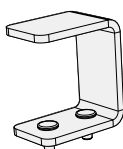
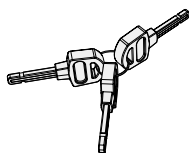
Climb Hazard

Do not climb on, hang from or suspend objects from any components of your product unless otherwise specified.



**Before beginning, you should have:**

Additional tools required:

Adjustable wrench **x2****OR**11mm Wrench **x2****Contents - Box 1**Tech Tub<sup>®</sup>  
**x1**Foam  
**x1****In Box 1**Hook & Loop  
Straps  
**x6**Divider  
**x6**  
(23229)Power Strip  
**x1**  
(25515)Power Strip Bracket  
**x2**  
(232281)Locking Block  
**x1**  
(31078)Locking Pin  
**x1**  
(31079)Padlock  
**x2**Cable Hook  
**x2**Key  
**x6****Hardware**  
Actual Size

A

M4 Wing Nut  
**x8**

B

M4 Lock Washer  
**x8**

C

M4 x 14mm  
Carriage Screw  
**x4**

D

M4 Flat Washer  
**x4**

E

M6 Washer  
**x6**

F

M6 Lock Nut  
**x2**

G

M6 x 70mm  
Screw  
**x2**Allen Key 4mm  
**1x**

# Tips for Assembly

## Watch for These Helpful Symbols

This symbol denotes a 2- or 3- Person Task. For safety, please ensure that there are the suggested number of people working on steps displaying this symbol.



Watch for this symbol throughout the Assembly Guide. Wherever you see it, pay close attention. The symbol denotes a step needing extra attention to ensure it is done correctly.



The star symbol highlights an advisory note.

## Before You Begin

- Lay out and identify all of the included parts.
- The hardware has been packed according to step.
- Read the assembly guide over once to familiarize yourself with them.



Please note that in its unassembled state, this product contains parts that can be hazardous to small children. This product should be assembled by an adult.



## As You Assemble the Unit

- Follow the steps in sequence.
- Before beginning each step, find the part(s) that you need for that step.
- Pay attention to the labels on the parts; they are there to help direct you at certain stages.
- The title of each step states what you will be doing. Review the text and the pictures as you build the unit.

# Customer Service - FAQ's



## For missing parts and other issues regarding this product:

Please call Copernicus Customer Service, where we will be happy to help.  
1-800-267-8494. Monday - Friday 8:30am - 4:30 pm EST.

OR

Email our Tech Support Service at [info@copernicused.com](mailto:info@copernicused.com)

## Need Tech Support? Have a Question?



Email our Tech Support Service

## Check out some of our other great products!



[www.copernicused.com](http://www.copernicused.com)

1

Actual Size:

(A)

M4 Wing Nut  
x4

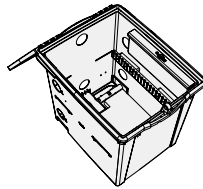


(B)

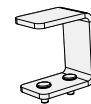
M4 Lock Washer  
x4



You will need: (Not to Scale)



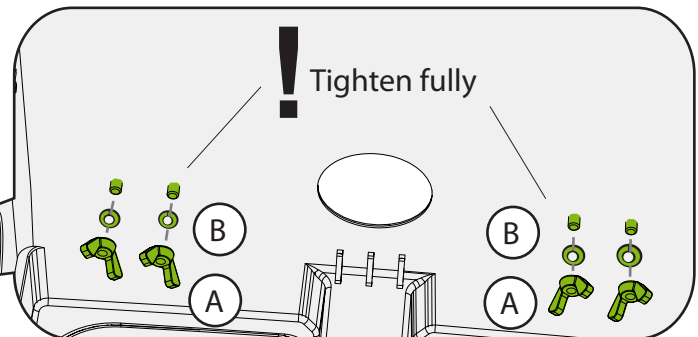
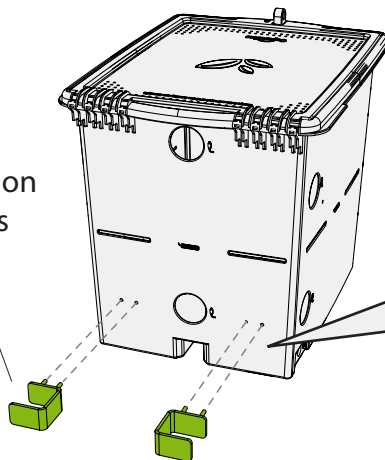
Tech Tub<sup>®</sup>  
x1



Cable Hook  
x2

## Install Cable Hooks

Note orientation  
of cable hooks



2

Actual Size:

(A)

M4 Wing Nut  
x4



(B)

M4 Lock Washer  
x4



(C)

M4 x 14mm Carriage Screw  
x4



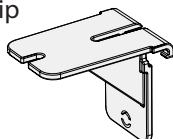
(D)

M4 Flat Washer  
x4

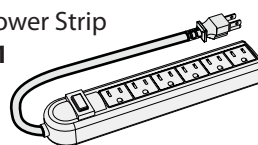


You will need: (Not to Scale)

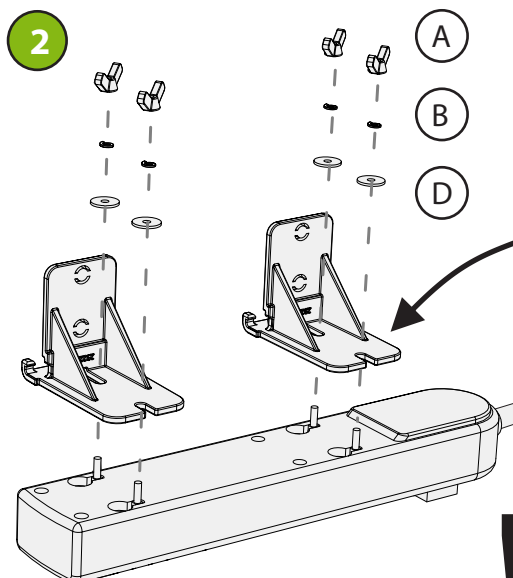
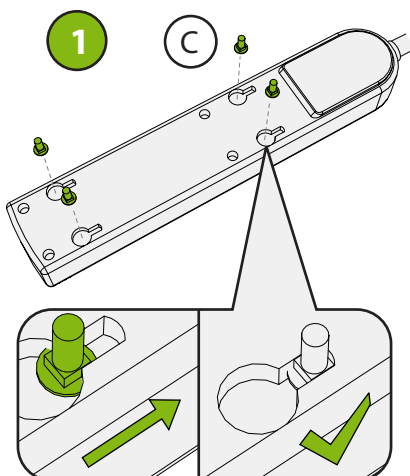
Power Strip  
Bracket  
x2



Power Strip  
x1



## Install Carriage Bolts on Power Strip and Mount to Power Strip Brackets



Power strip  
cord end



Keep your power strip upside  
down as shown. This will make  
the assembly easier!

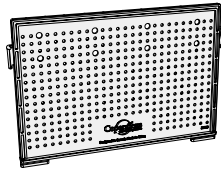


Pay close attention to  
orientation of power strip.



3

You will need: (Not to Scale)

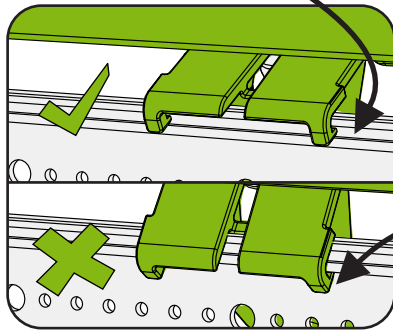


Divider  
x1

## Assemble Power Strip on Divider

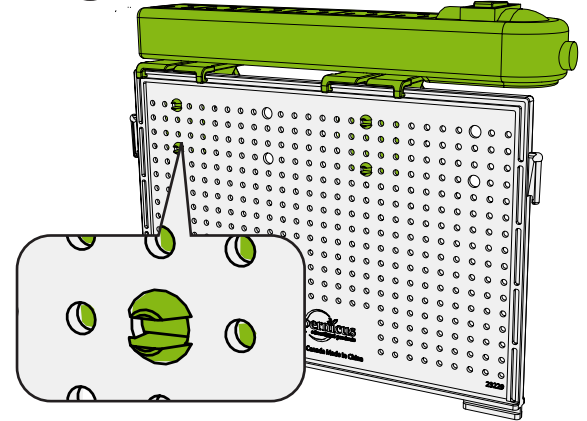
1

Bracket hooks fit into recess.



! Do not hook brackets below second rail.

2

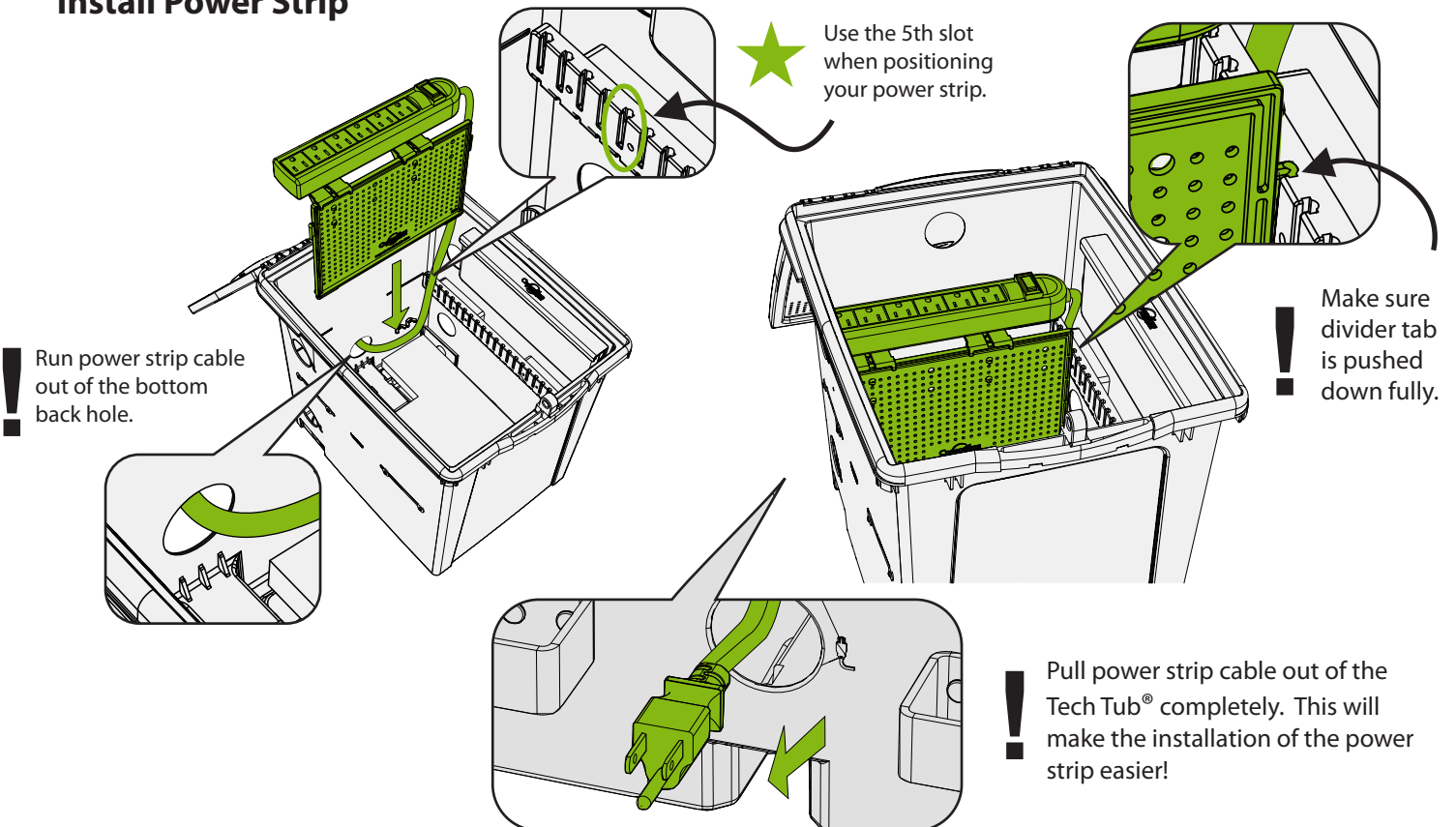


! Make sure snaps (x4) are fully connected

4

Actual Size:

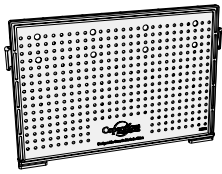
## Install Power Strip





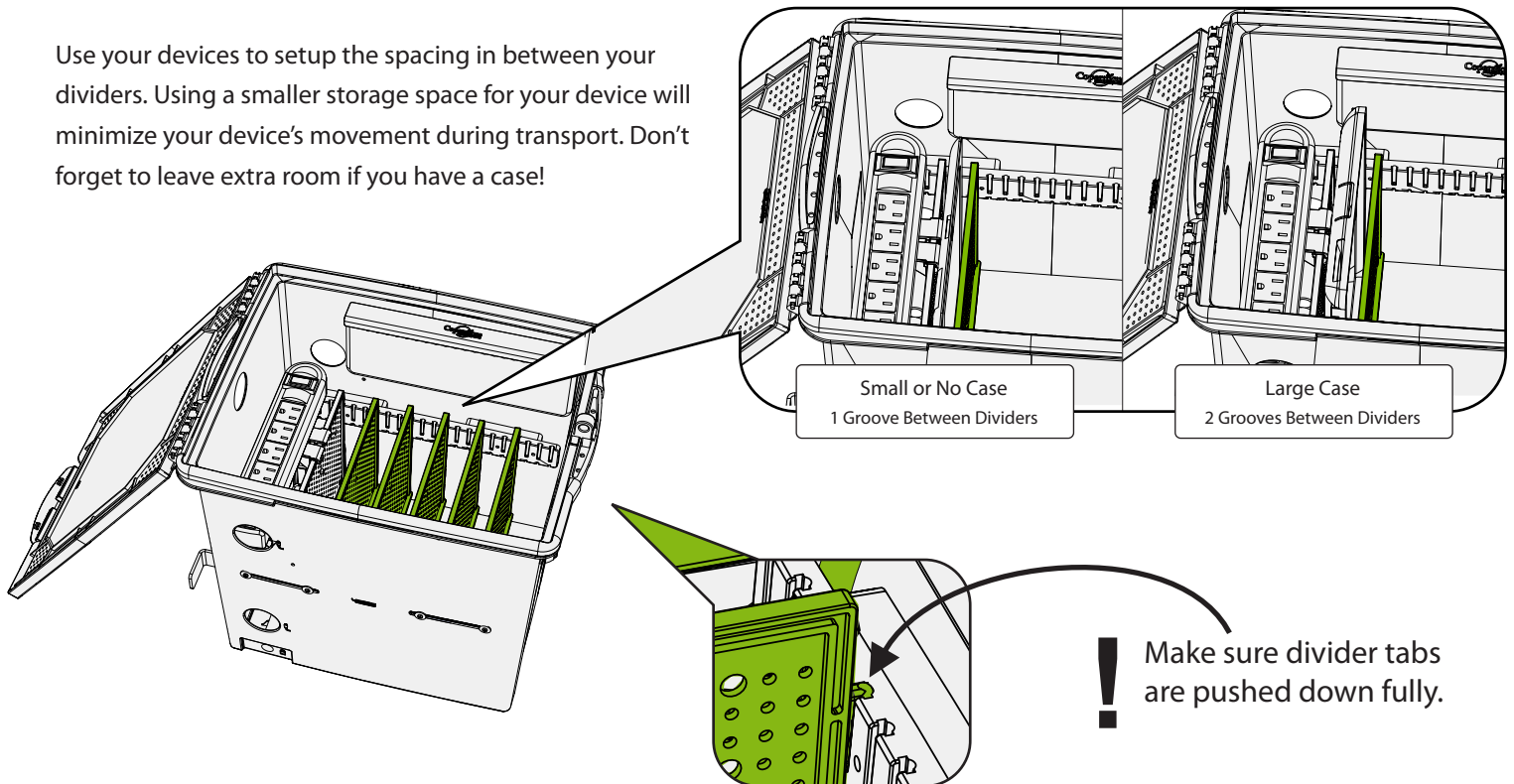
5

You will need: (Not to Scale)

Divider  
x5

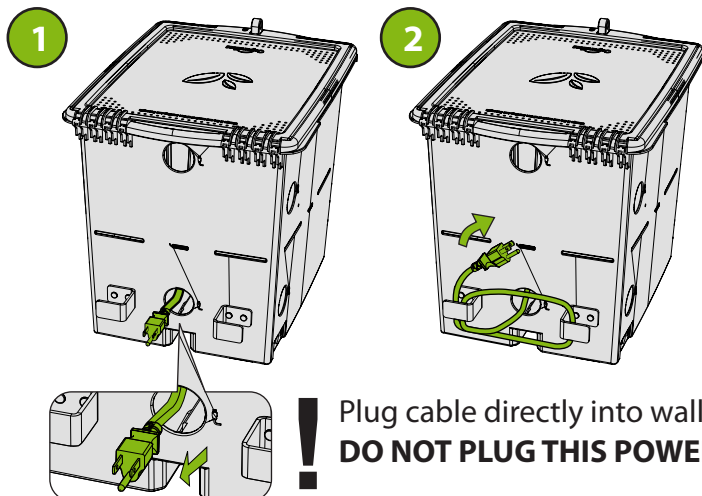
## Install Dividers

Use your devices to setup the spacing in between your dividers. Using a smaller storage space for your device will minimize your device's movement during transport. Don't forget to leave extra room if you have a case!



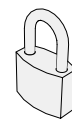
6

## Wrap Power Strip Cable



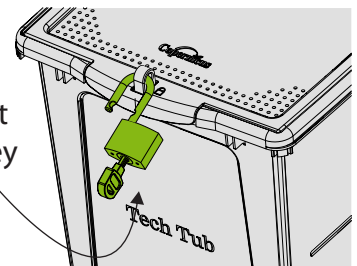
7

You will need: (Not to Scale)

Padlock  
x1

## Lock Lid with Padlock

Note:  
! Padlock will not  
lock without key



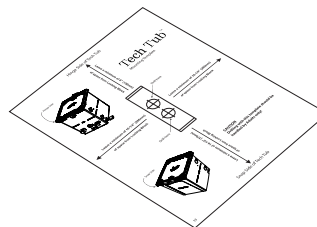
# OPTIONAL: Follow Steps 8 to 10 to install the Tech Tub® Locking Block and Locking Pin System

8

You will need: (Not to Scale)

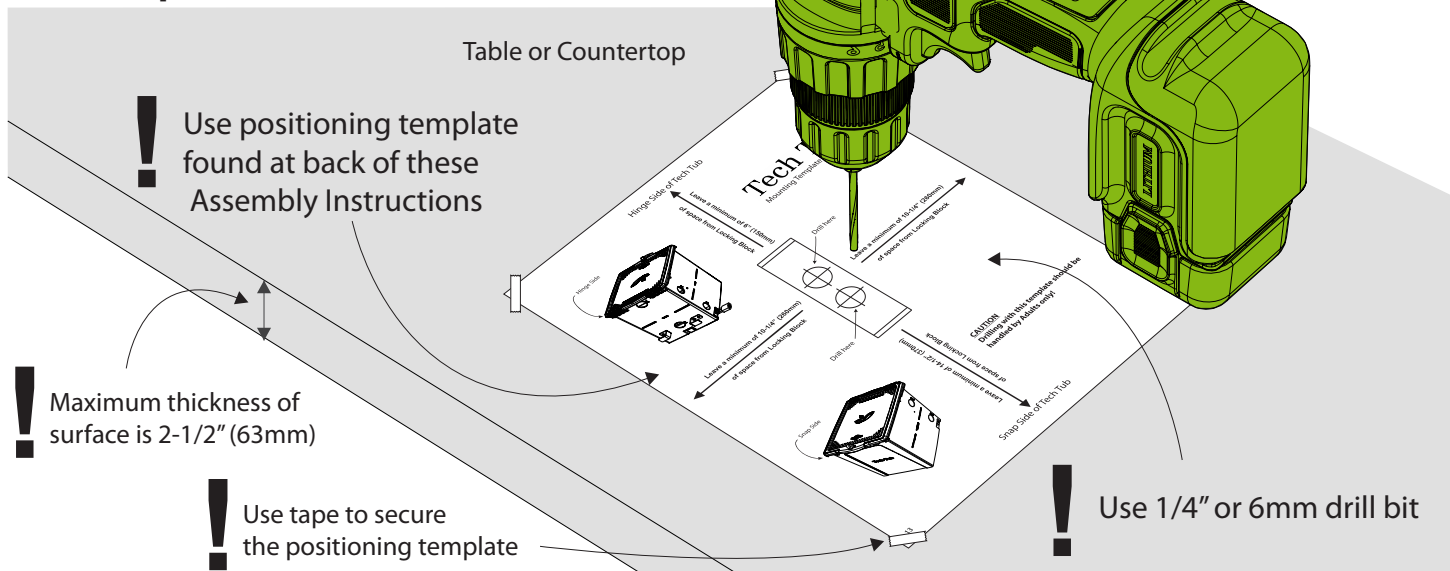


This system allows you to lock your Tech Tub® to a table or countertop. This is a really good idea if you leave your devices out in the open or your room doesn't lock. Once the Tech Tub® is secured in place you can lock the tub lid to secure your devices.



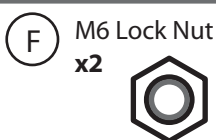
Positioning Template (found at back of this guide)  
x1

## Use Template and Drill Holes into Surface

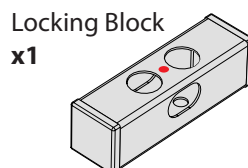


9

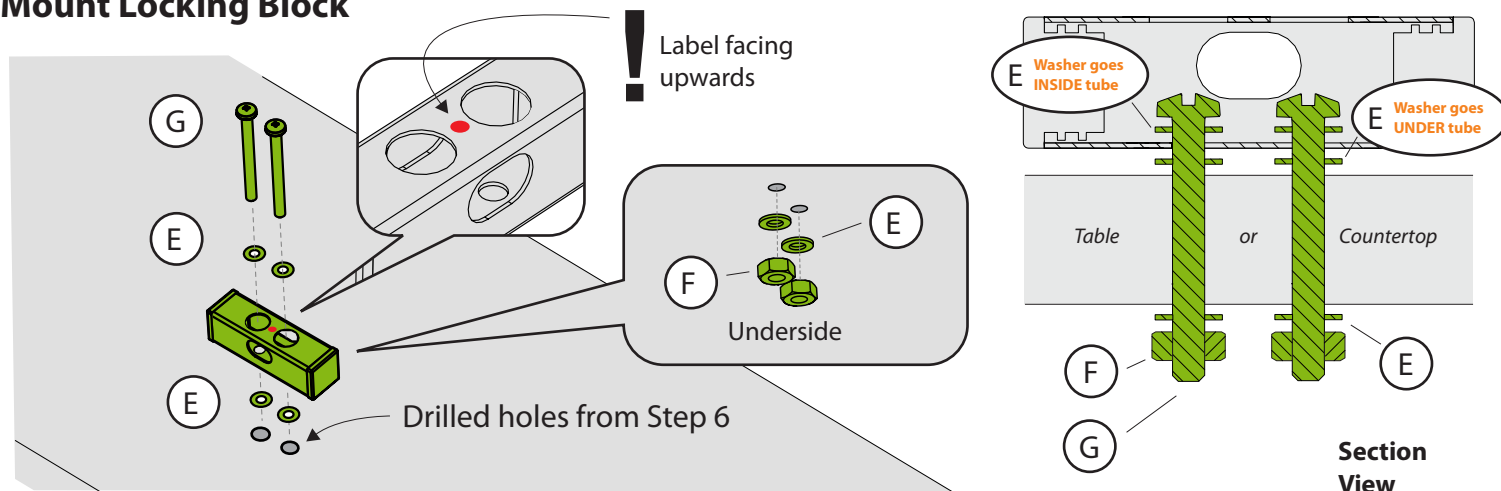
Actual Size:



You will need: (Not to Scale)



## Mount Locking Block

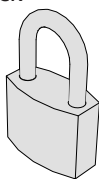


## OPTIONAL: Follow Steps 8 to 10 to install the Tech Tub<sup>®</sup> Locking Block and Locking Pin System

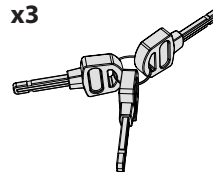
10

You will need: (Not to Scale)

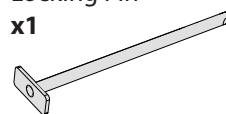
Padlock  
x1



Key  
x3

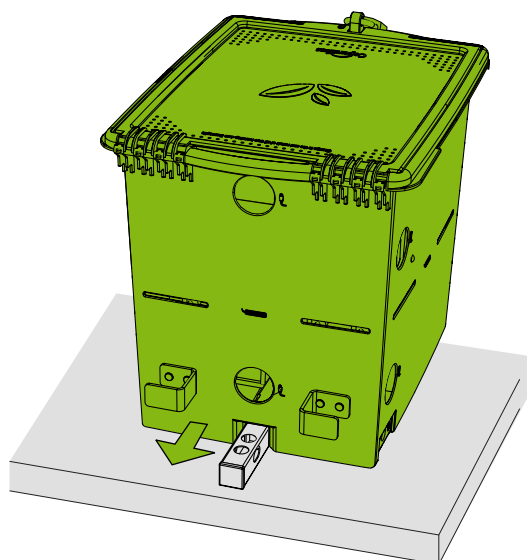


Locking Pin  
x1

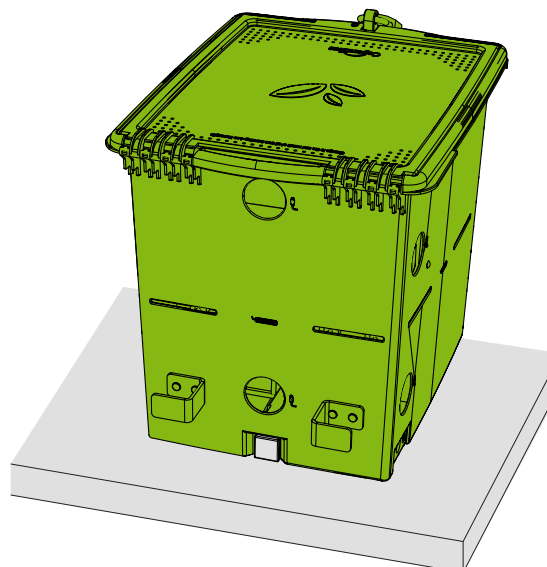


### Lock the Tech Tub<sup>®</sup> with Locking Pin

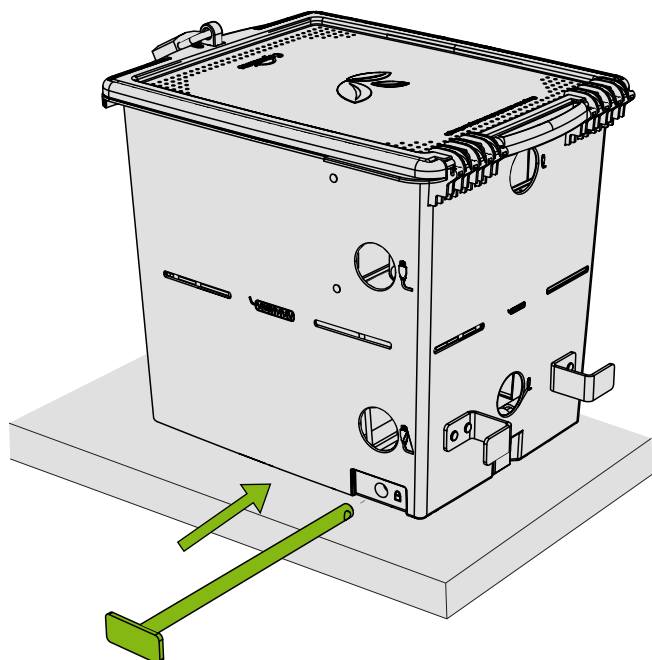
1 Push Tech Tub<sup>®</sup> onto Locking Block



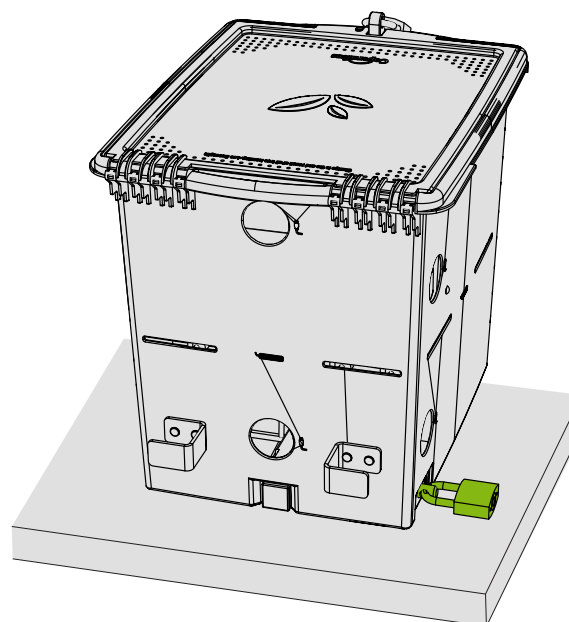
2 Push Tech Tub<sup>®</sup> all the way back until the Locking Block is completely in channel.



3 Slide Locking Pin through hole on Tech Tub<sup>®</sup>



4 Secure Locking Pin with Padlock on other side.

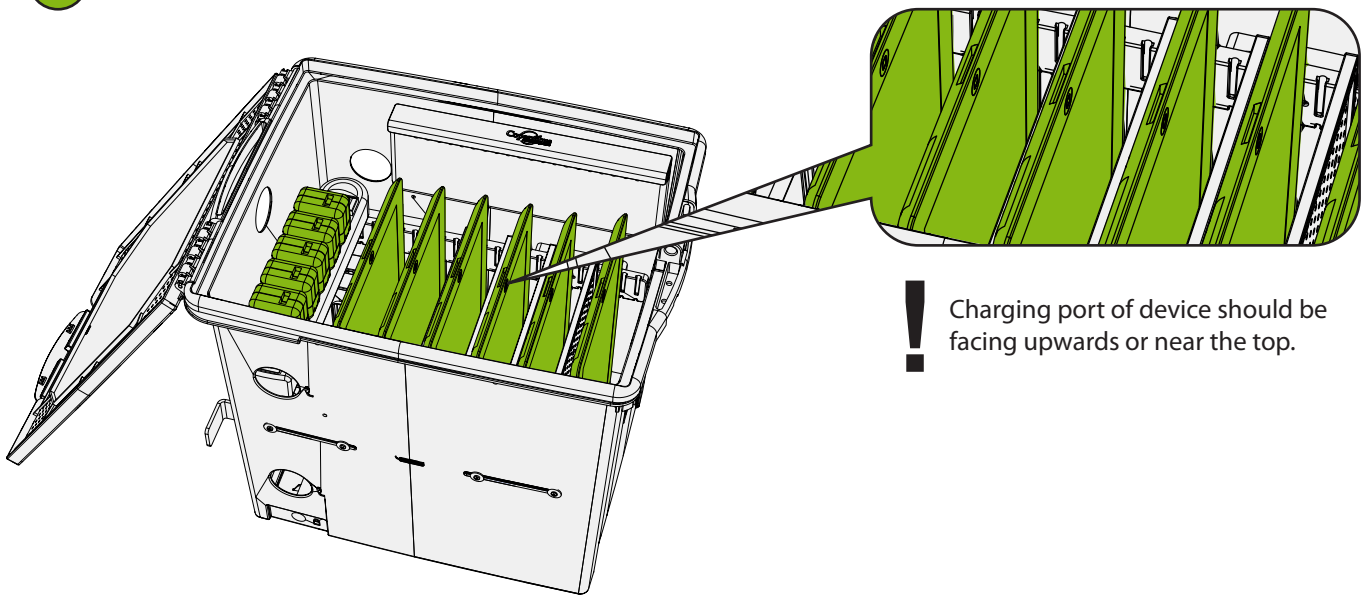




# Cable Management

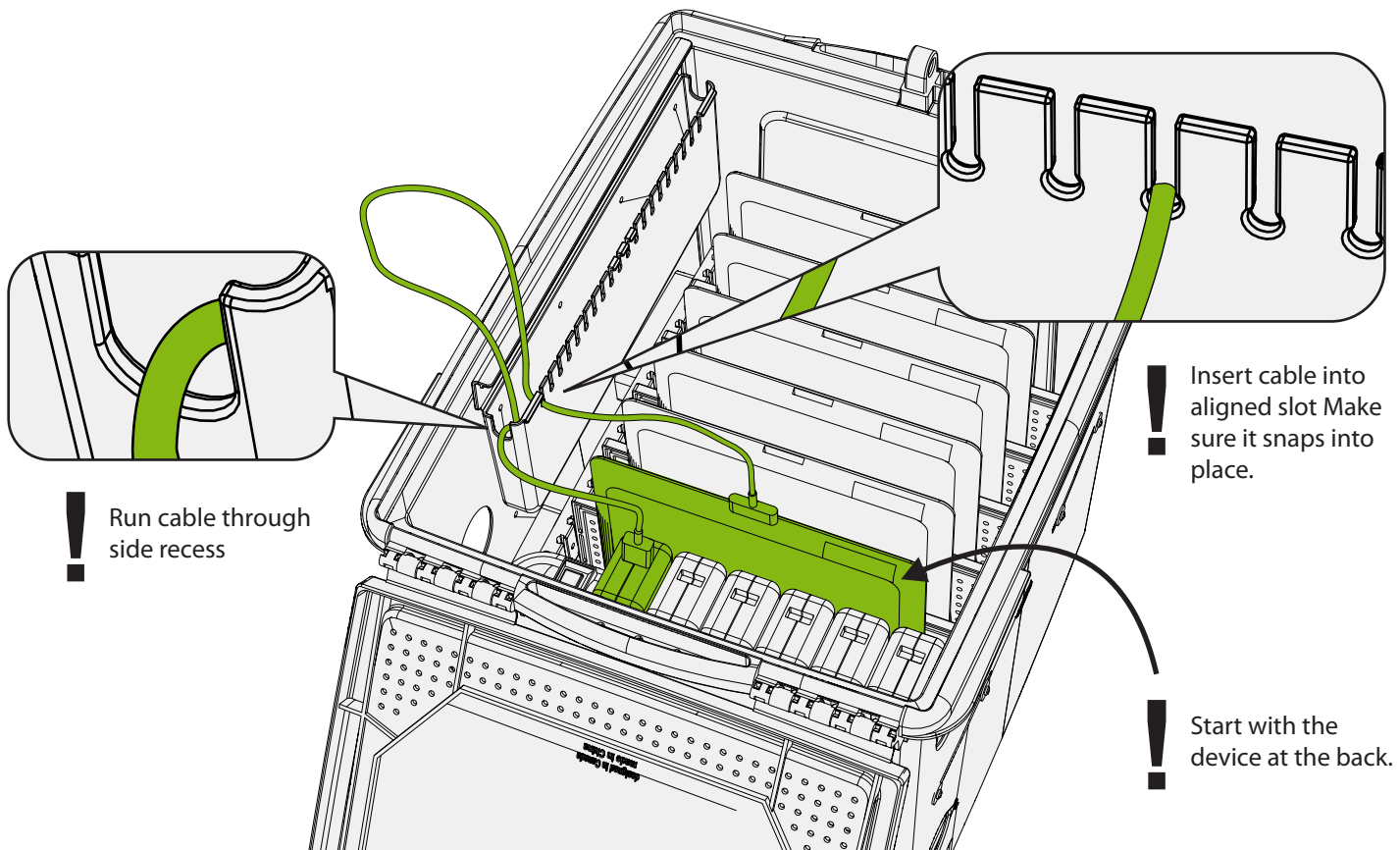
1

Arrange your Tech Tub® with all of your devices and adapters.



2

Plug cable into power adapter and first device.







# Cable Management

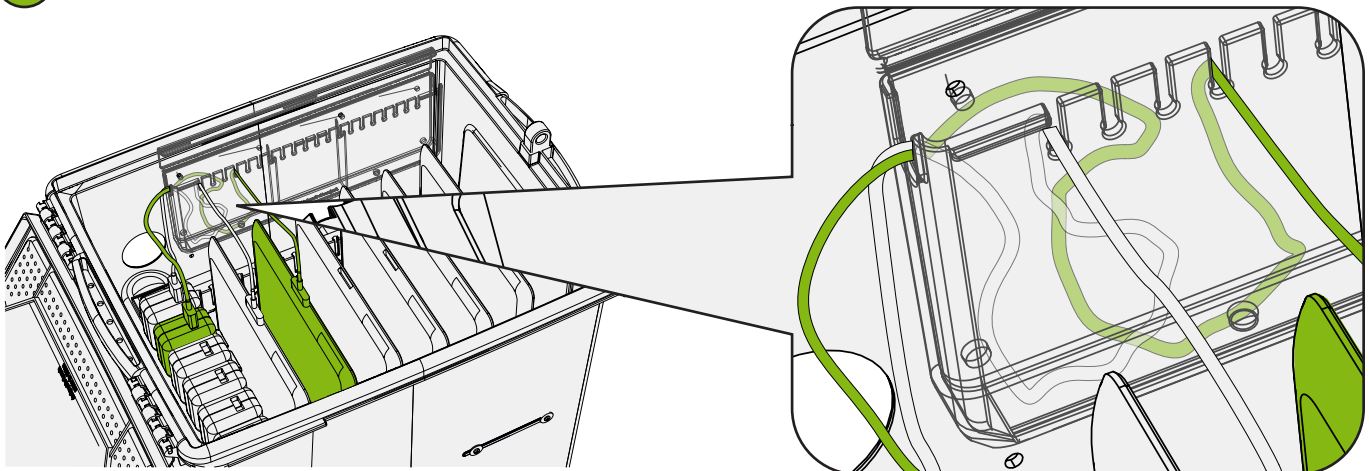
3

Store excess cable into Cable Management Pocket.



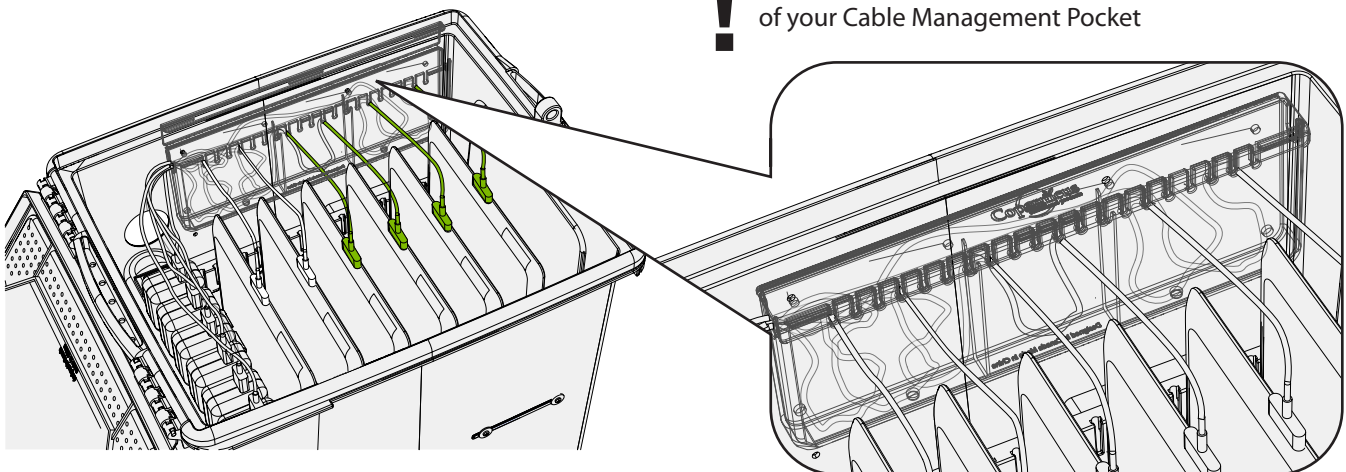
4

Repeat Steps 1-3 for the second device.



5

Repeat Steps 1-3 for the remaining devices.



Once you have your cables set up, close the lid of your Cable Management Pocket



## Tips for Use

### Device Management

Keeping track of your devices can be made even easier by creating a sign-out program.

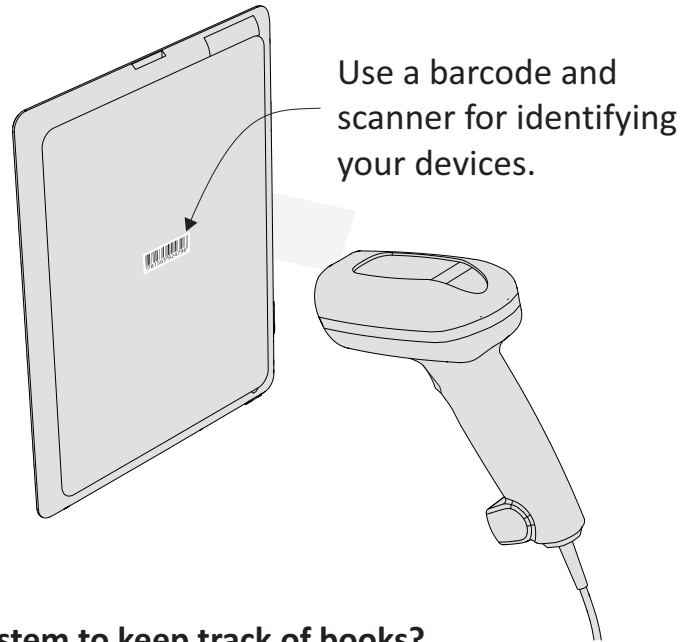
There are many automated software solutions available that make setting up and running a device check-out program very easy.

Here is a list of some companies and their products:

*ResourceMate®* - [www.resourcemate.com](http://www.resourcemate.com)

*Neuton Data Systems* - [www.neuton.net](http://www.neuton.net)

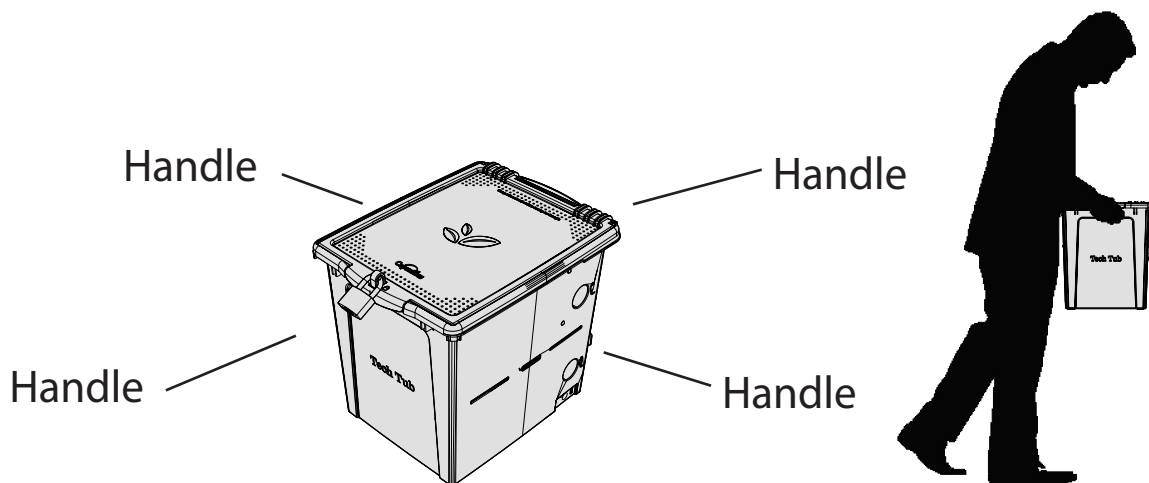
*IntelliScanner* - [www.intelliscanner.com](http://www.intelliscanner.com)



**Does your school already use an automated system to keep track of books?  
You could use this system to also keep track of your devices!**

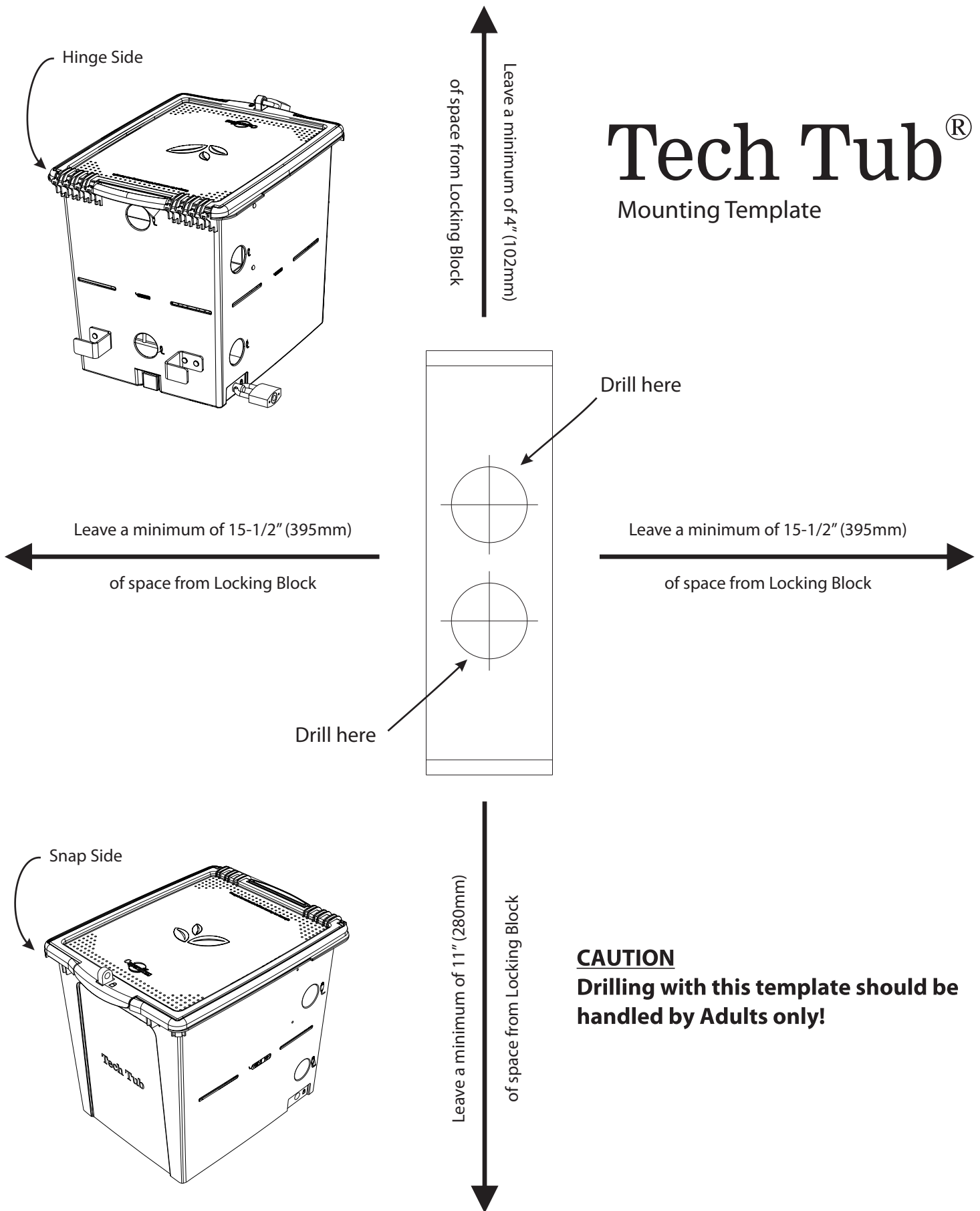
### Carrying your Tech Tub®

Use the Handles along the sides of the Tech Tub® for easy lifting and carrying.





## Hinge Side of Tech Tub



## Snap Side of Tech Tub