



Assembly Guide AUD1_3_4_2013_A

Check out our other products online at
www.copernicused.com

For assistance, please contact us:

1-800-267-8494

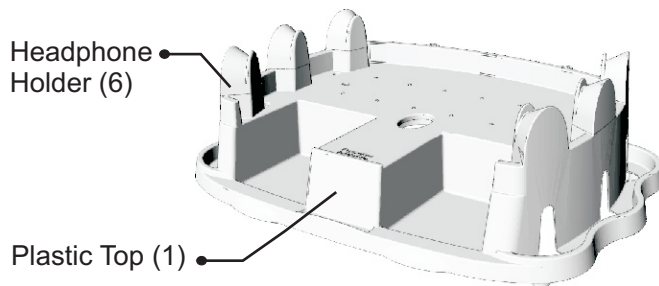
Email info@copernicused.com

Have your packing slip ready for reference

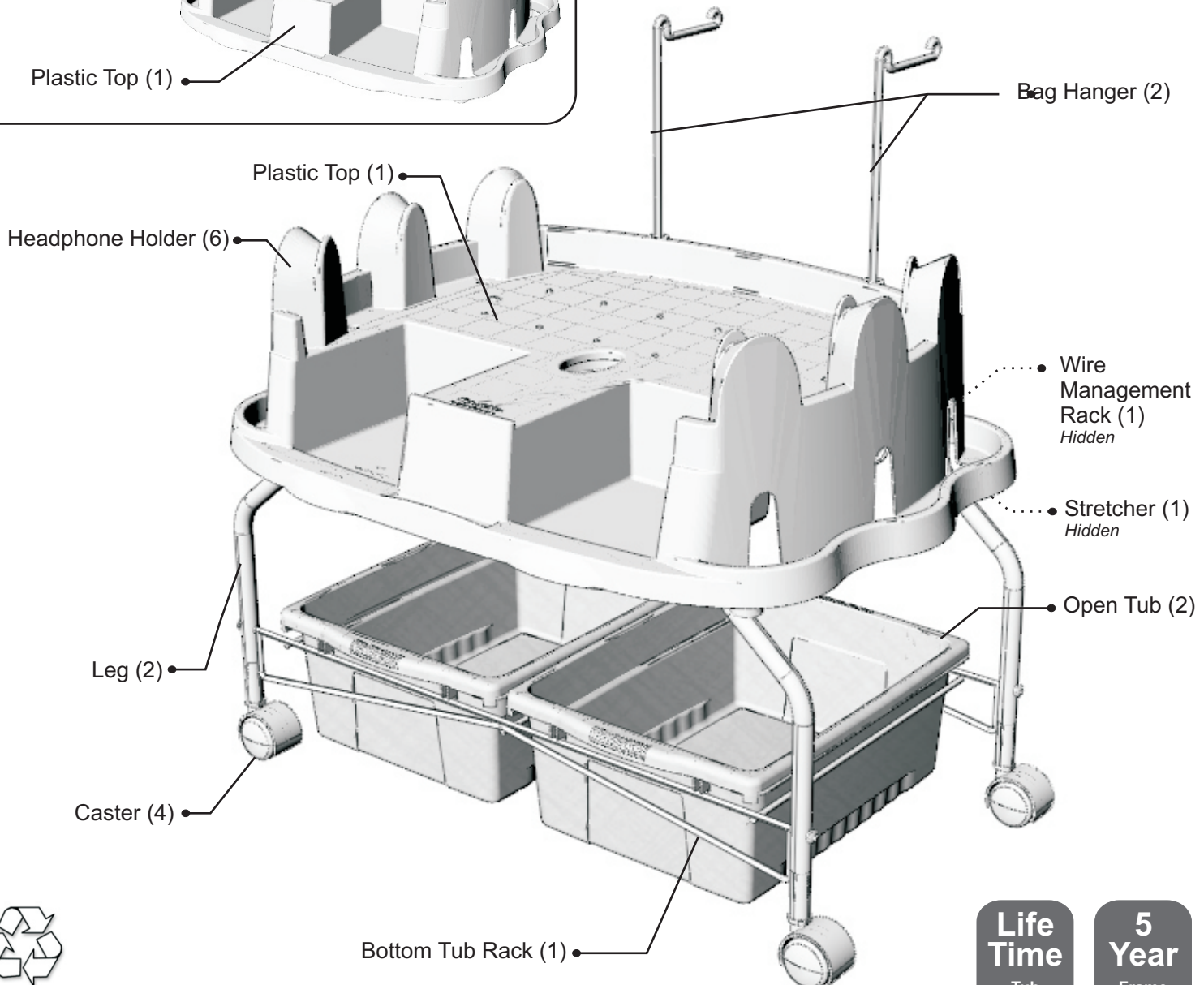
WARNING !

- This product is meant to be assembled by an adult.
- In its unassembled state, small parts present a hazard.
- To be used under direct supervision of an adult.

AUD1/AUD3



AUD4



Please Recycle

Before beginning, you should have:

Additional tools required:



OR

7mm,
10mm,
13mm (x2),
17mm (x2)

+



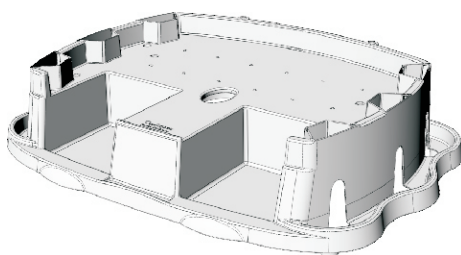
+

Screwdriver
⊕ OR ⊖

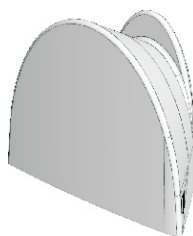
AUD1/AUD3

Contents - Box 1

Plastic Top
1x



Headphone Holder
6x



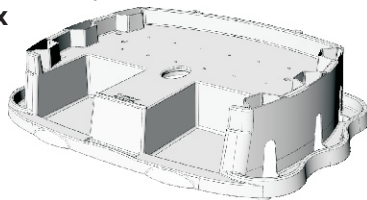
Rubber Feet
4x



AUD4

Contents - Box 1

Plastic Top
1x



Leg
2x



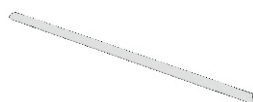
Headphone Holder
6x



Wire Management Rack
1x



Stretcher
1x



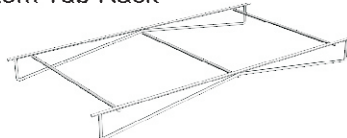
Bag Hanger
2x



2" Caster
4x



Bottom Tub Rack
1x



In Box 1

A
8x



B
8x



C
6x



D
4x



E
4x



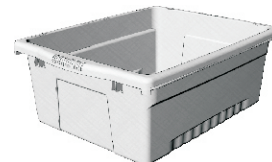
F
(Not to Scale)
1x



Hardware
Actual Size

Contents - Box 2

Open Tub
2x



Please Recycle

Tips for Assembly - Using this Manual

Watch for These Helpful Symbols

This symbol denotes a 2 Person Task. For safety, please ensure that there are two people working on steps displaying this symbol



2 Person Task

Watch for this symbol throughout the Assembly Instructions. Wherever you see it, pay close attention. The symbol denotes a step needing extra attention to ensure it is done correctly



The Star symbol highlights an advisory note



Before You Begin

- Layout and identify all of the included parts
- The hardware has been packed according to size, separate them based on those sizes
- Read the assembly instructions over once to familiarize yourself with them
- Please note that in its unassembled state, this product contains parts that can be a hazard to small children; it should be assembled by an adult



As You Assemble the Unit

- Follow the steps in sequence
- Before beginning each step, find the part(s) that you need for that step
- Pay attention to the labeling on the parts, they are there to help direct you at certain stages
- The title of each step states what you will be doing. Review the text and the pictures as you build the unit



**Life
Time**

Tub
Warranty

**5
Year**

Frame
Warranty

Validate Your Warranty

To validate your five year frame warranty & lifetime tub warranty, submit the ON-LINE form at www.copernicused.com

I hope that the assembly of your **NEW AudioPod** went well.
If you have any questions, or concerns, please call us at 1-800-267-8494, where someone will be happy to help.
Enjoy using your new product, and happy teaching,

Jim Phillips
President



Please Recycle

★ Do not tighten any fasteners, unless instructed

1

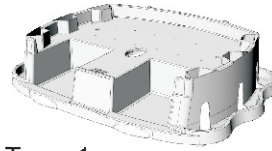
Actual Size:

You will need: (Not to Scale)

Headphone Holder x 6



Plastic Top x 1

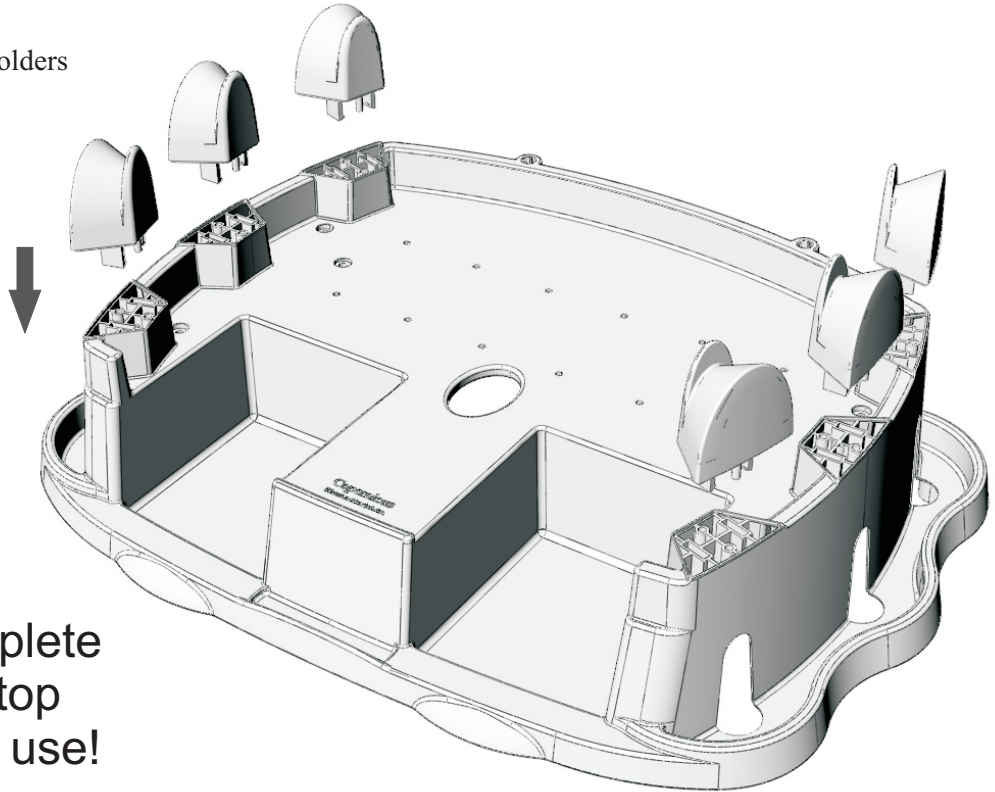


Attach Headphone Holders to Plastic Top

Align a Headphone Holder with the matching cutout in the Plastic Top

- Insert 2 Centre Pins first
- Press Headphone Holder down firmly into place. You may need to “wiggle in” the holder so one Side Tab goes in before the other. NOTE: Headphone Holder may be very hard to snap in because once installed, they are not meant to be removed.

Repeat for remaining Headphone Holders



Assembling an AUD1 or AUD 3?

You only need to complete Step 1 and your tabletop AudioPod is ready for use!

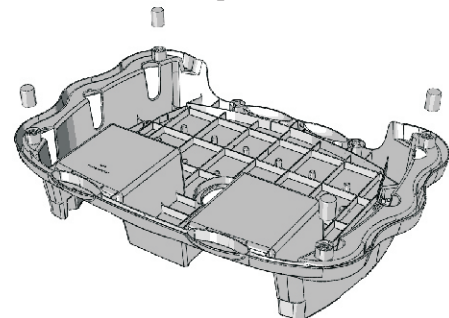
AUD1/AUD3 ONLY:

Align a Rubber Foot with the matching post in the underside of the Plastic Top

- Insert Foot over the outside of the largest inner ring

Repeat for remaining Rubber Feet

Rubber Feet x 4



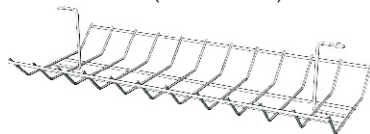
Please Recycle

2

Actual Size:



You will need: (Not to Scale)

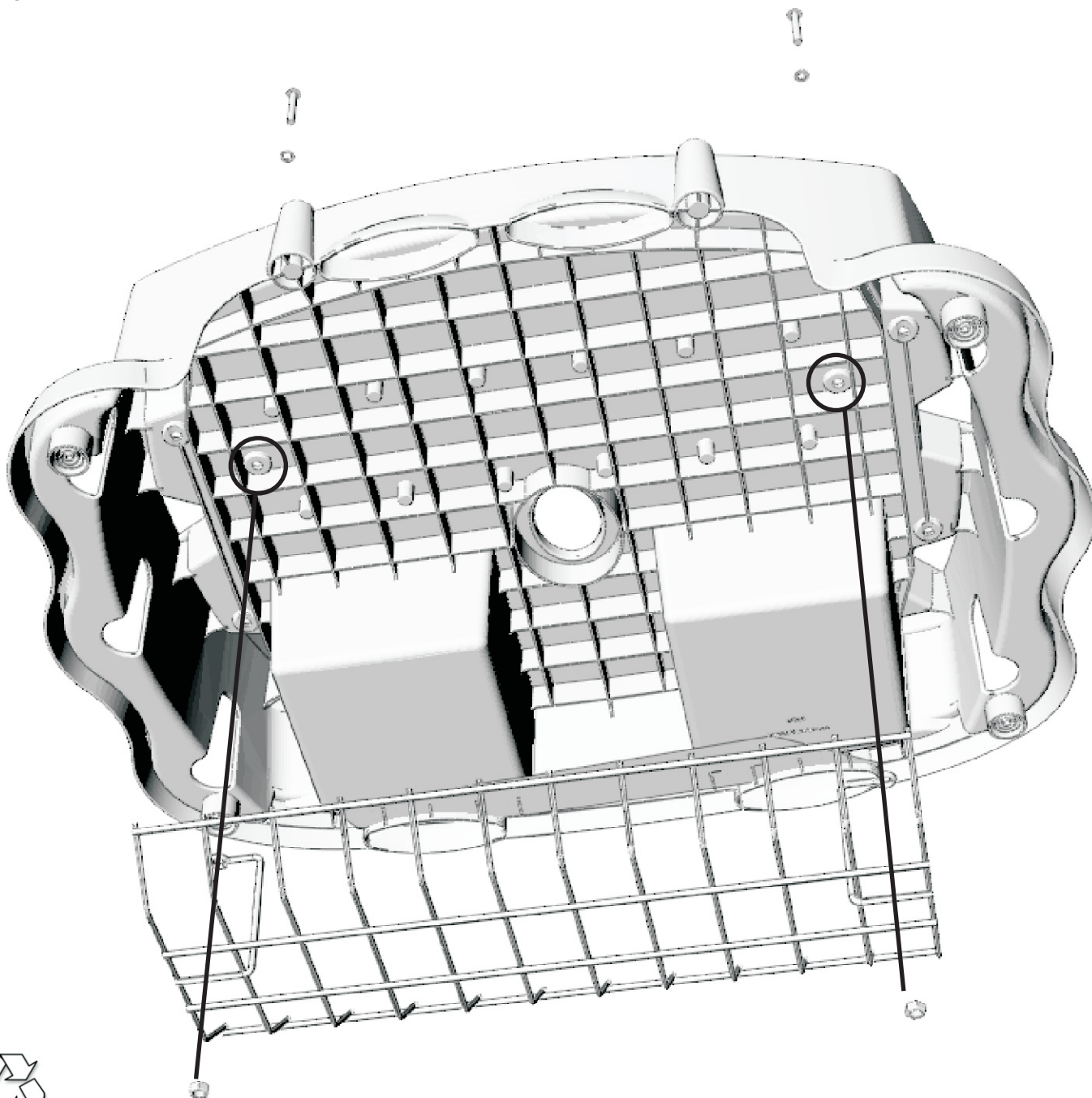


Wire Management Rack x 1

Install Wire Rack

Align the Wire Management Rack with the holes shown on the Plastic Top

- Tighten bolts



Please Recycle

3

Actual Size:



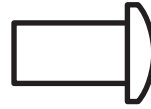
A
x 2



B
x 2



C
x 4



D
x 4

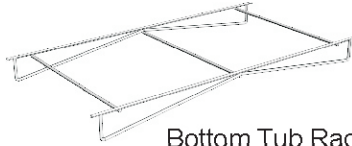


E
x 4

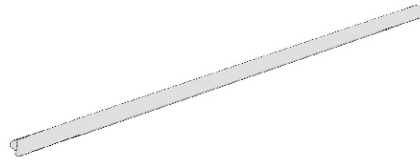
You will need: (Not to Scale)



Leg x 2

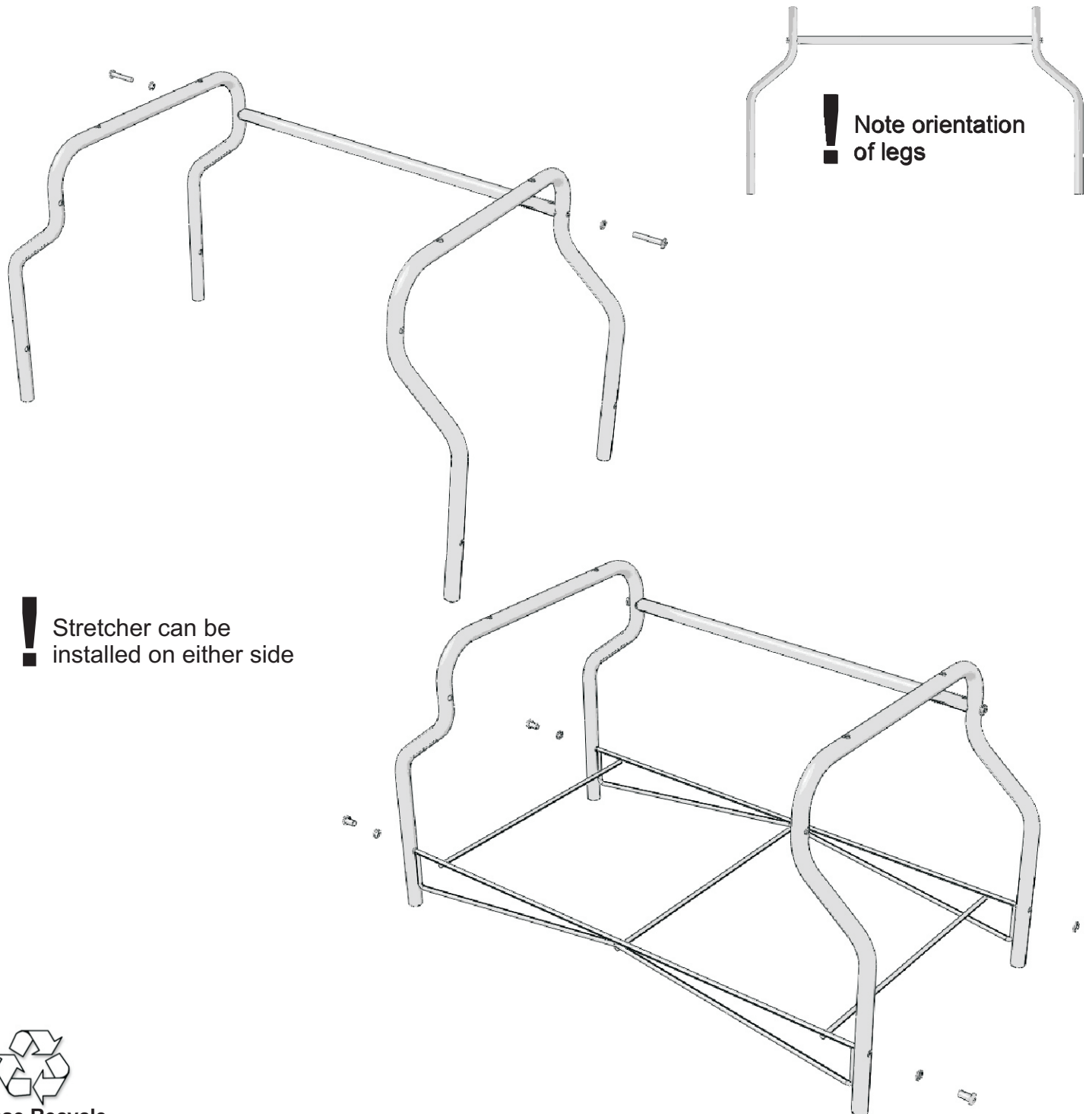


Bottom Tub Rack x 1



Stretcher x 1

Build Frame



! Note orientation
of legs

! Stretcher can be
installed on either side



Please Recycle

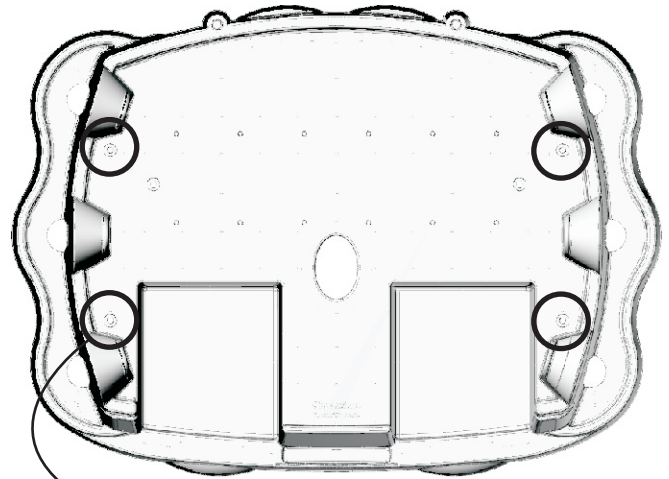
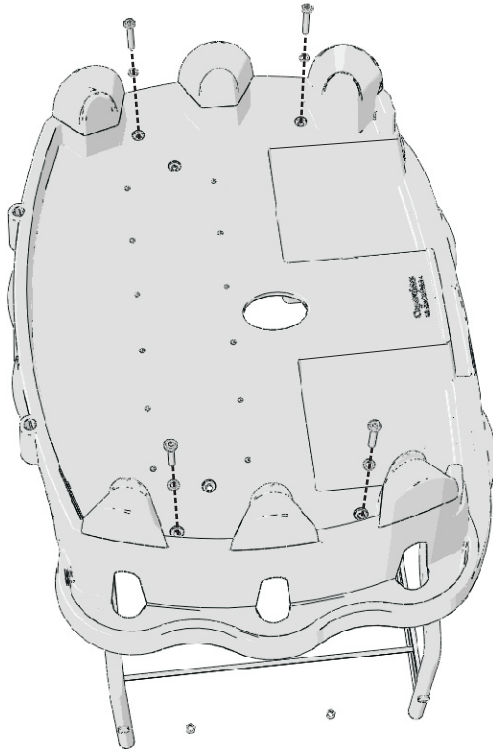
4

Actual Size:

A
x 4B
x 4C
x 4

Attach Built Frame to Plastic Top

Align Legs Assembly with holes in the Plastic Top Assembly



Use 4 holes shown

5

You will need: (Not to Scale)



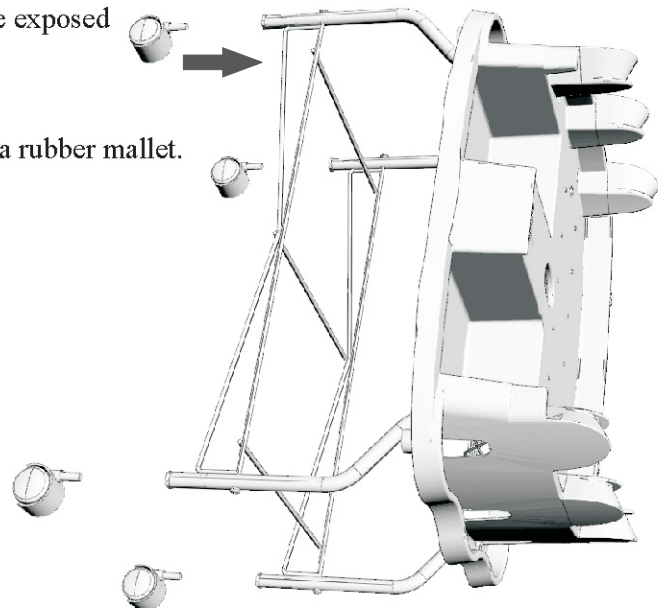
Caster x 4

Install Casters

Flip entire Assembly onto its side, so the bottoms of the Legs are exposed

Press Casters firmly into the Legs

- Casters will click into place
- If necessary, place a wrench between the wheels & tap in with a rubber mallet.



Please Recycle

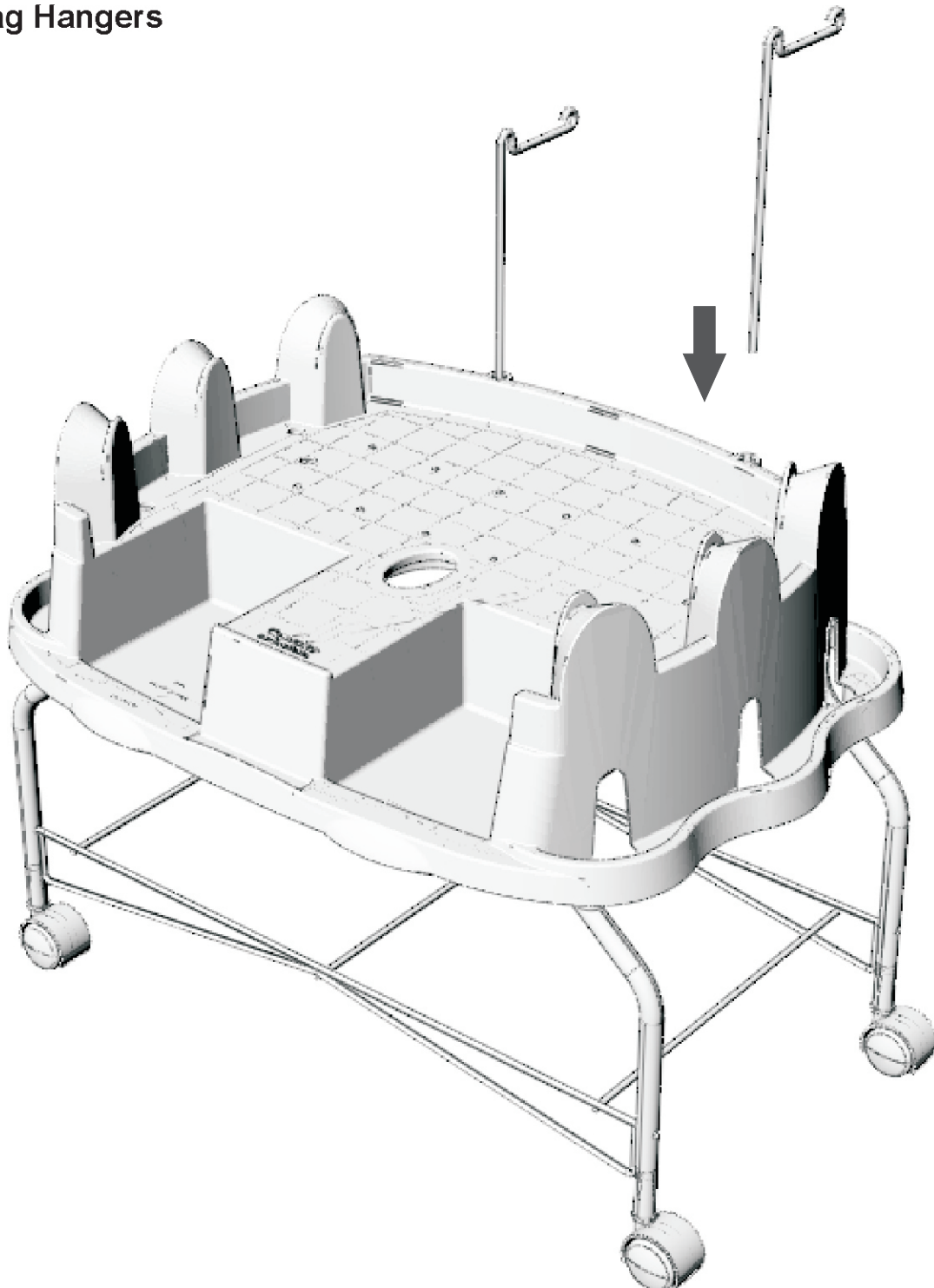
6

You will need: (Not to Scale)



Bag Hanger x 2

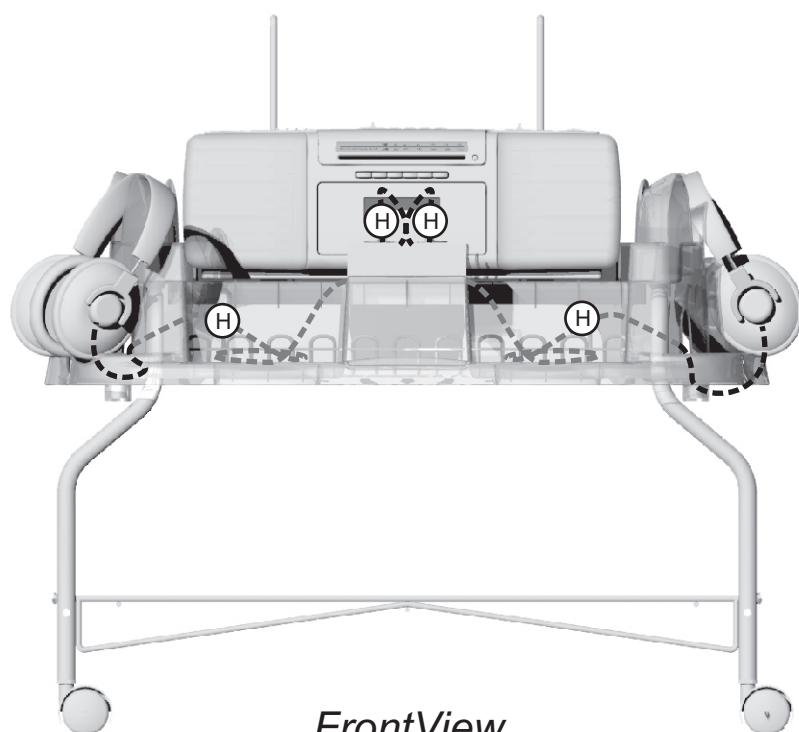
Insert Bag Hangers



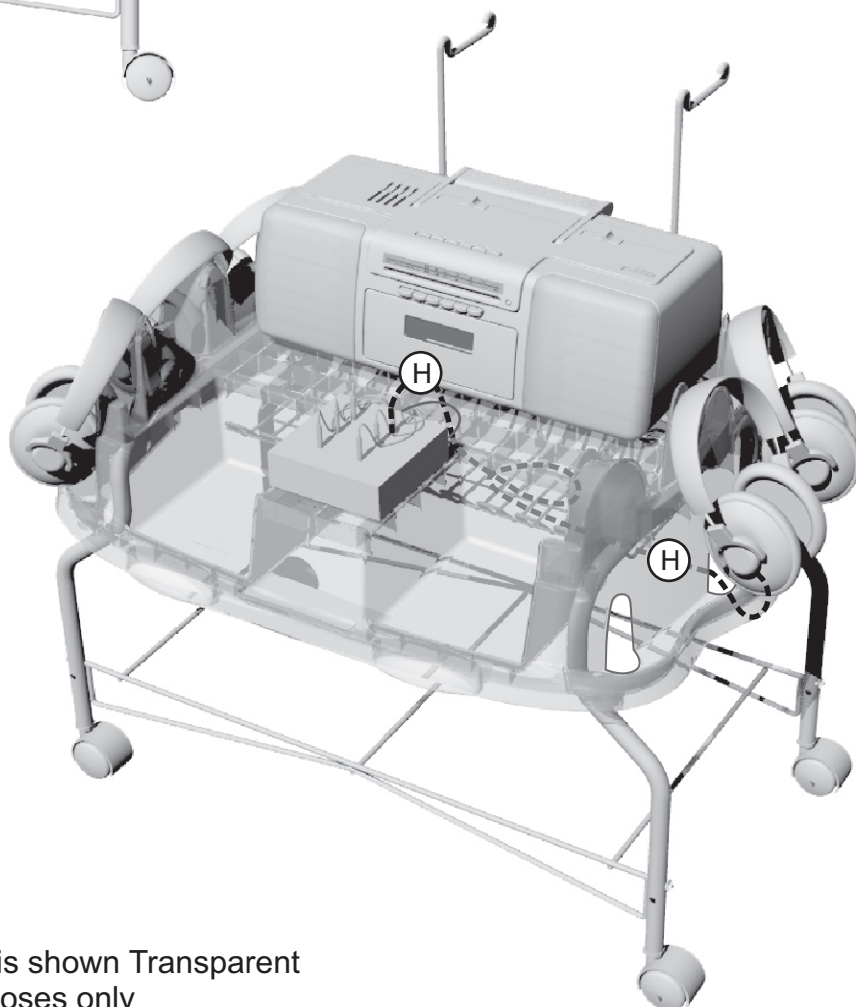
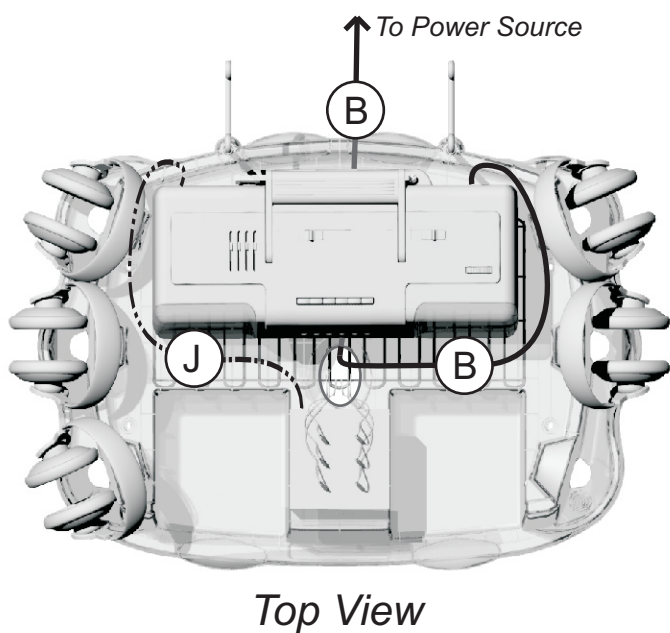
Please Recycle

Tip _____

Wire Management - Routing Cables



- B** Boombox cables run around and down through the hole in the center of the Plastic Top and then out to a Power Source. Excess cable collects in the Wire Management Rack.
- H** Headphone cables run though the side of the Plastic Top, underneath, come up through the hole in the center and plug into the jack box. Excess cable collects in the Wire Management Rack.
- J** If using a separate Headphone Jackbox, plug it into the Boombox.



Note - Plastic Top is shown Transparent for illustration purposes only



Please Recycle