



## Assembly Guide

TEC1000\_2017\_A

Check out our other products online at  
[www.copernicused.com](http://www.copernicused.com)

For assistance, please contact us:

**1-800-267-8494**

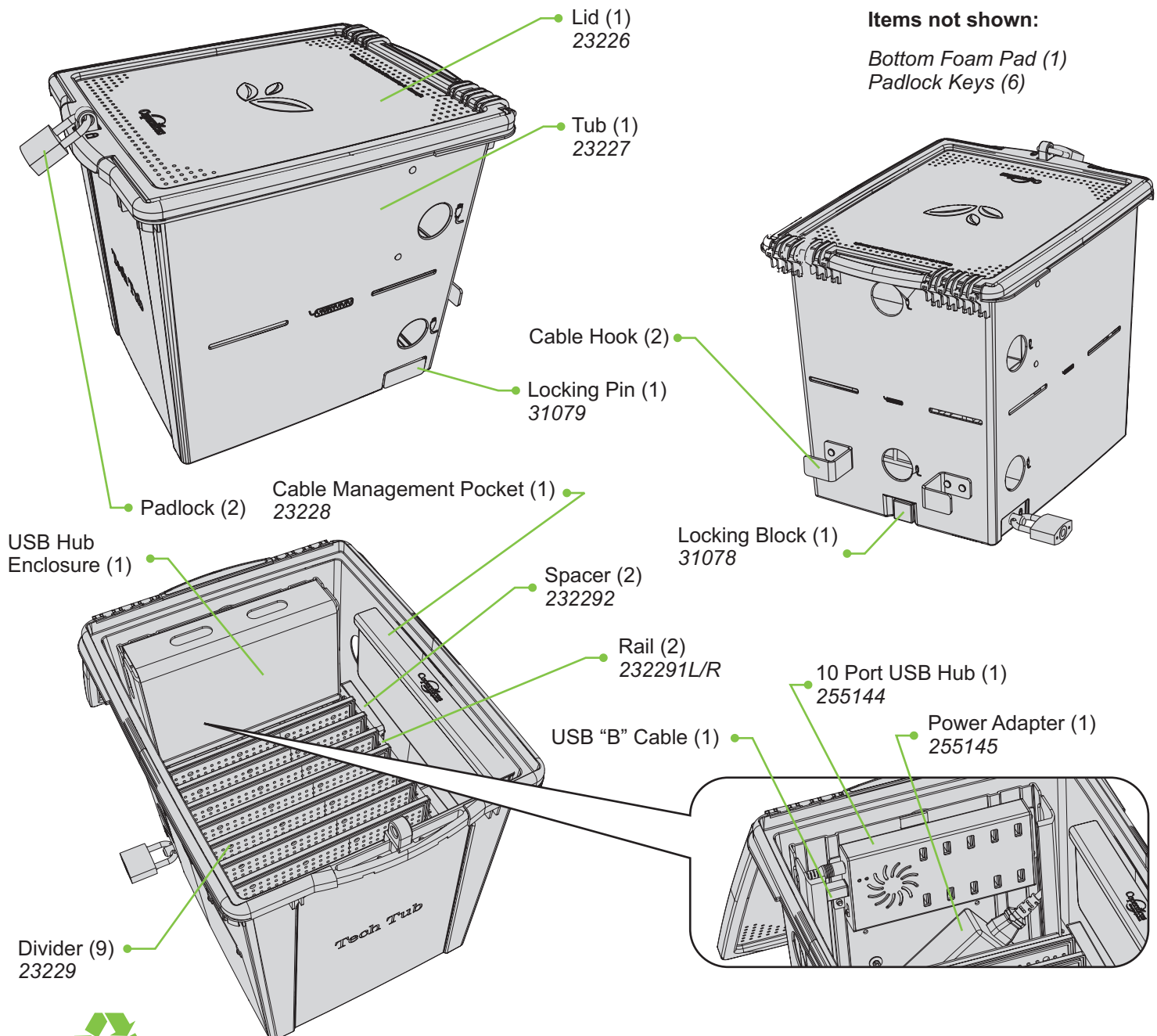
Email [info@copernicused.com](mailto:info@copernicused.com)

**Have your packing slip ready for reference**

## WARNING !

- This product is meant to be assembled by an adult.
- In its unassembled state, small parts present a hazard.
- To be used under direct supervision of an adult.

*Don't throw  
these instructions  
away!  
Positioning template  
printed inside!*



**Please Recycle**

# Tech Tub® Premium: Holds Up to 10 Tablets



## Assembly Guide

TEC1000\_2017\_A

Check out our other products online at  
[www.copernicused.com](http://www.copernicused.com)

For assistance, please contact us:

**1-800-267-8494**

Email [info@copernicused.com](mailto:info@copernicused.com)

**Have your packing slip ready for reference**

Dear Educator,

Thank you for purchasing one of our products. I hope that the Tech Tub® is useful in your classroom.

If you have any questions, concerns, or ideas please contact us by telephone at 1-800-267-8494 or email at [info@copernicused.com](mailto:info@copernicused.com).

Enjoy using your new product and happy teaching.

Jim Phillips  
Chief Cook and Bottle Washer



### IMPORTANT PRODUCT ADVISORY

DO NOT LEAVE THIS PRODUCT PLUGGED IN AND RUNNING FOR MORE THAN 72 HOURS AT ONE TIME.

ONLY USE THE USB HUB WITH THE SUPPLIED POWER ADAPTER.

REMEMBER TO TURN OFF POWER TO USB HUB BEFORE UNPLUGGING FROM OUTLET.

We do not inherit the  
earth from our ancestors,  
we borrow it from our  
children.

Change is the end result  
of all true learning.

LEO BUSCAGLIA

What you leave behind is  
not what is engraved in  
stone monuments, but  
what is woven into the  
lives of others.

Education is the most  
powerful weapon which  
you can use to change the  
world.

NELSON MANDELA

NORTH AMERICAN

PROVERB

PERICLES

**Life  
Time**

Tech Tub™  
& Lid Warranty

**1**

**Year**  
Power Supply  
Warranty

## Validate Your Warranty

To validate your warranty, submit the ON-LINE form at [www.copernicused.com](http://www.copernicused.com).

**Enter a drawing to win a Copernicus Product for your classroom at the same time!**





# Warning! Hazard Risks!

Please read the warnings below for important safety information regarding your product. Failure to read these warnings or to follow the instructions below could result in personal injury or damage to your product that could void your warranty.



Small  
Parts

In its unassembled state, this product contains parts that can be hazardous to small children. This product should be assembled by an adult.



Adult  
Supervision

This product is to be used under the supervision of an adult.



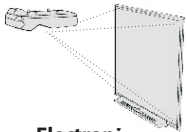
Indoor Use  
Only

This product is intended for indoor use only. To reduce the risk of fire or electric shock, do not expose this product to rain or moisture. The internal components are not sealed from the environment.



Power Strip  
Specifications

Read your power strip electrical specifications. Only plug in devices that are approved for use with this power strip. Connect the supplied power strip directly to a wall outlet. **Do not connect to another power strip or use an extension cord.** Unplug when not in use. **Do not leave this product plugged in for more than 72 consecutive hours.** Turn off power strip before unplugging.



Electronic  
Equipment

Read the electrical specifications of any electronic equipment you are using with your Copernicus products. Failure to read these specifications and follow their instructions could result in damage to your equipment or personal injury.



Cable Trip  
Hazard

Ensure that any cables extending across the floor to your product are properly bundled and marked to avoid tripping or falling which may lead to personal injury.



Electrical Shock

Do not install or use the electrical components of this unit during a lightning storm.



**Before beginning, you should have:**

Additional tools required:

Adjustable wrench



AND



Pliers

AND

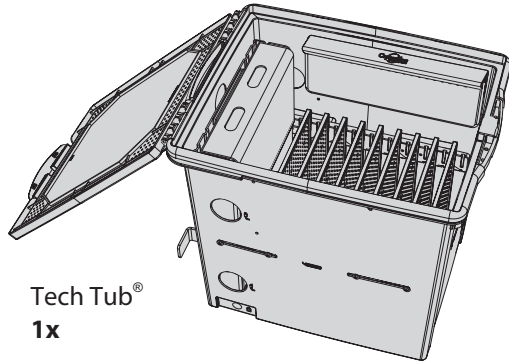
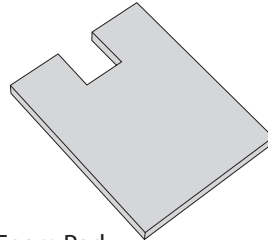
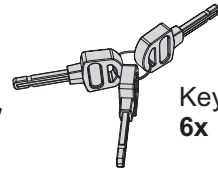
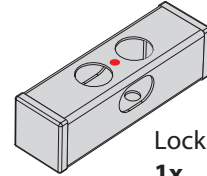
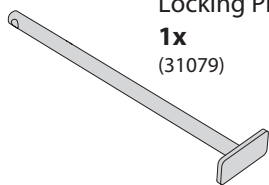
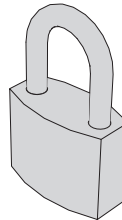
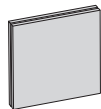
Screwdriver



AND



Drill with 1/4"/6mm drill bit

**Contents - Box 1****Tech Tub®  
1x****Foam Pad  
1x**  
(Found inside Tech Tub®)**Key  
6x****Locking Block  
1x**  
(31078)**Locking Pin  
1x**  
(31079)**Padlock  
2x****In Box 1****Hardware  
Actual Size****A****M6 x 70mm  
2x****B****M6 Washer  
6x****C****M6 Lock Nut  
2x****Allen Key 4mm  
1x****Hook and Loop Square  
with Adhesive  
2x**



# Tips for Assembly

## Watch for These Helpful Symbols

Watch for this symbol throughout the Assembly Guide. Wherever you see it, pay close attention. The symbol denotes a step needing extra attention to ensure it is done correctly.

The star symbol highlights an advisory note.



## Before You Begin

- Lay out and identify all of the included parts.
- The hardware has been packed according to step.
- Read the assembly guide over once to familiarize yourself with them.



Please note that in its unassembled state, this product contains parts that can be hazardous to small children. This product should be assembled by an adult.



## As You Assemble the Unit

- Follow the steps in sequence.
- Before beginning each step, find the part(s) that you need for that step.
- Pay attention to the labels on the parts; they are there to help direct you at certain stages.
- The title of each step states what you will be doing. Review the text and the pictures as you build the unit.

## Customer Service - FAQ's



### For missing parts and other issues regarding your Tech Tub:

Please call Copernicus Customer Service, where we will be happy to help.

1-800-267-8494. Monday - Friday 8:30am - 4:30 pm EST.

OR

Email our Tech Support Service at [info@copernicused.com](mailto:info@copernicused.com)

***Watch this video on how to  
set up and manage your cables***



[www.copernicused.com/help/default.aspx](http://www.copernicused.com/help/default.aspx)

***Need Tech Support?  
Have a Question?***



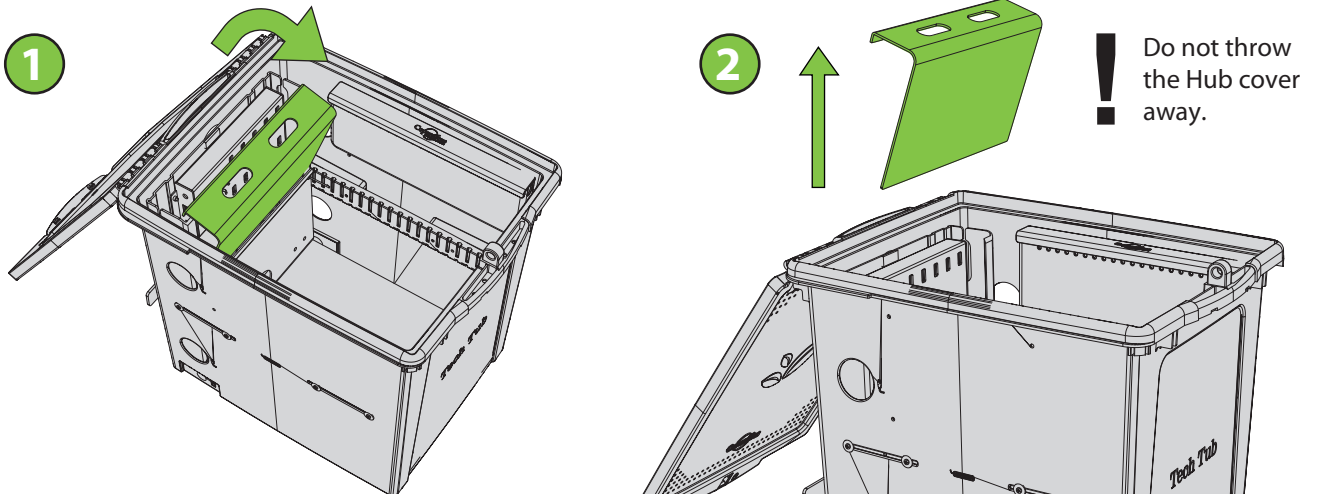
Email our Tech Support Service



**!** If your device or device case measures more than 0.6" (1.5cm) in thickness, you will need to assemble your USB Enclosure to the outside of your Tech Tub<sup>®</sup>. Steps 1-12 will guide you to assemble your USB Hub on the outside of your Tech Tub<sup>®</sup>. Proceed to Step 14 if you are leaving your USB Hub assembled inside of your Tech Tub<sup>®</sup>.

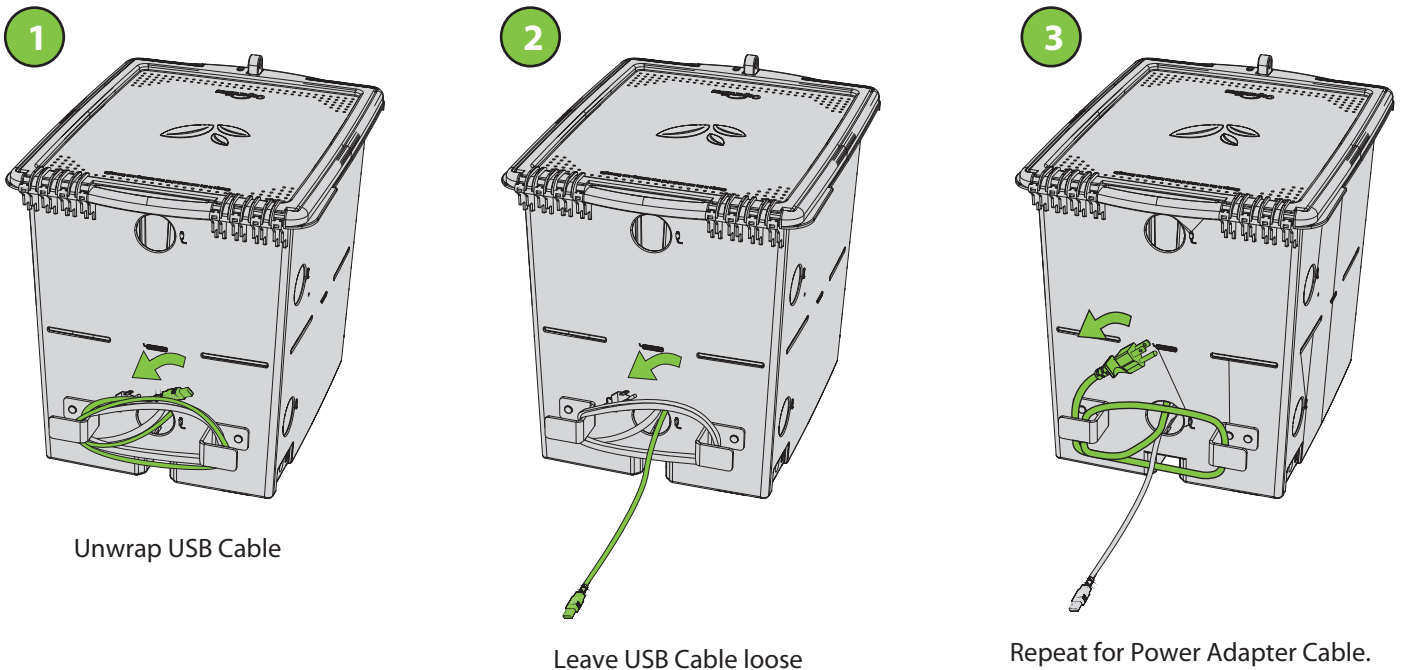
1

### Remove USB Hub Cover from Tech Tub<sup>®</sup>



2

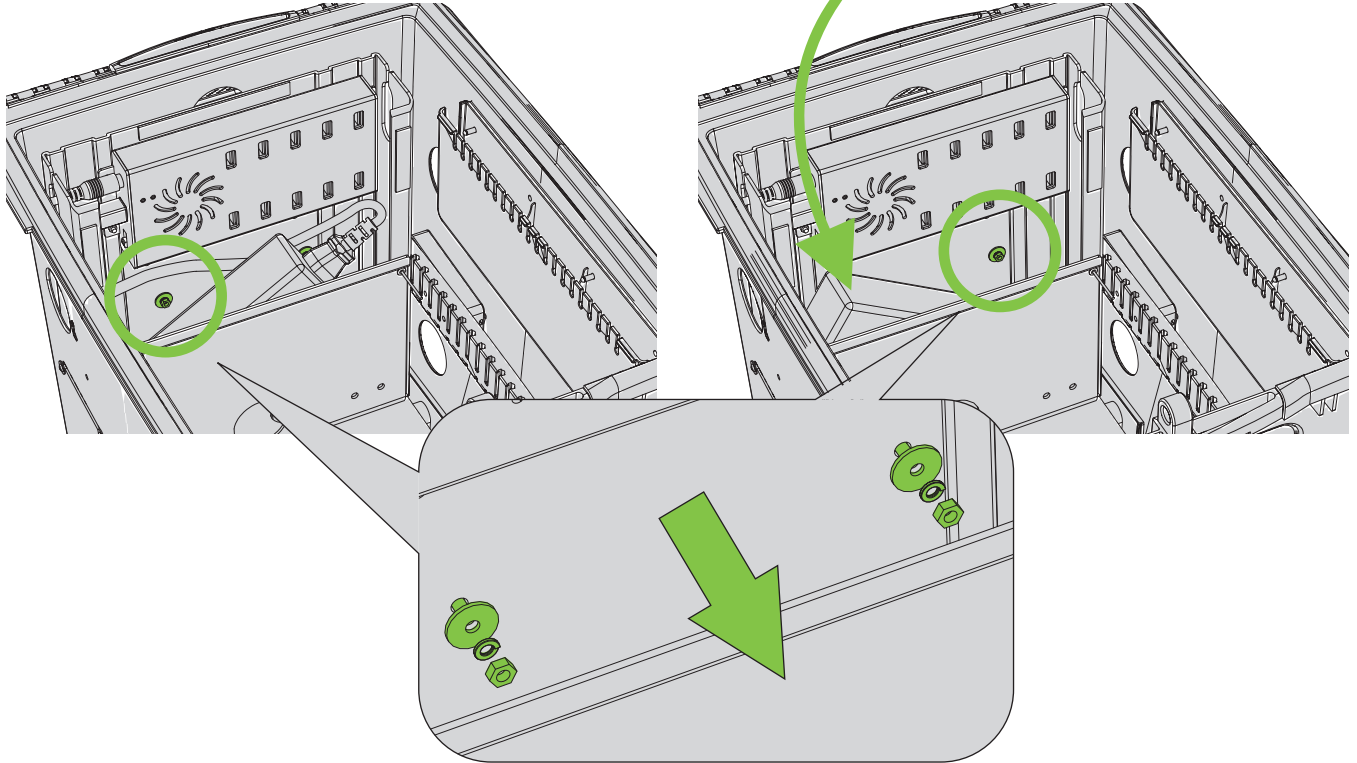
### Unwrap USB Syncing Cable and Power Adapter Cable



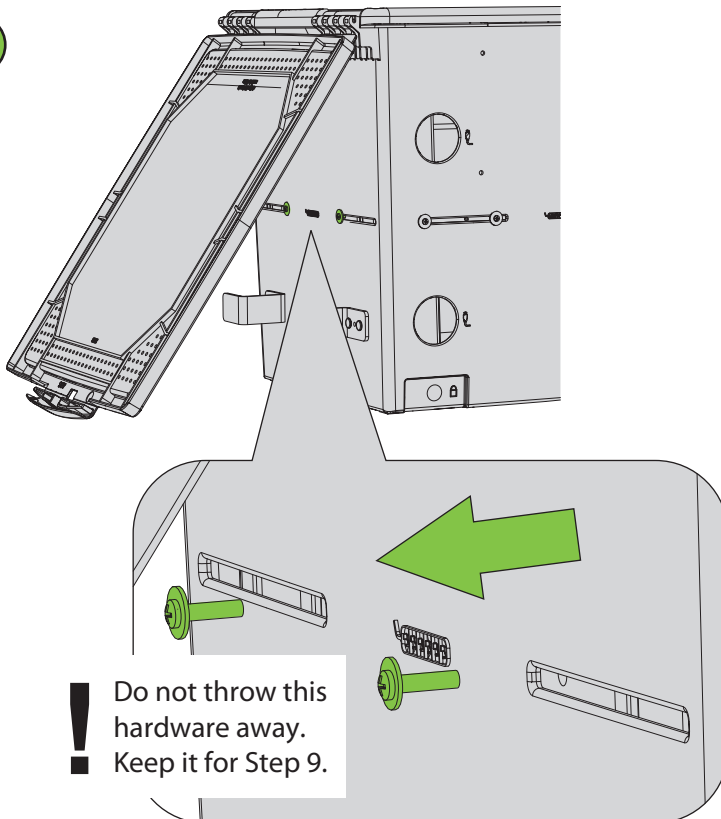


## Unfasten and Remove USB Hub Enclosure

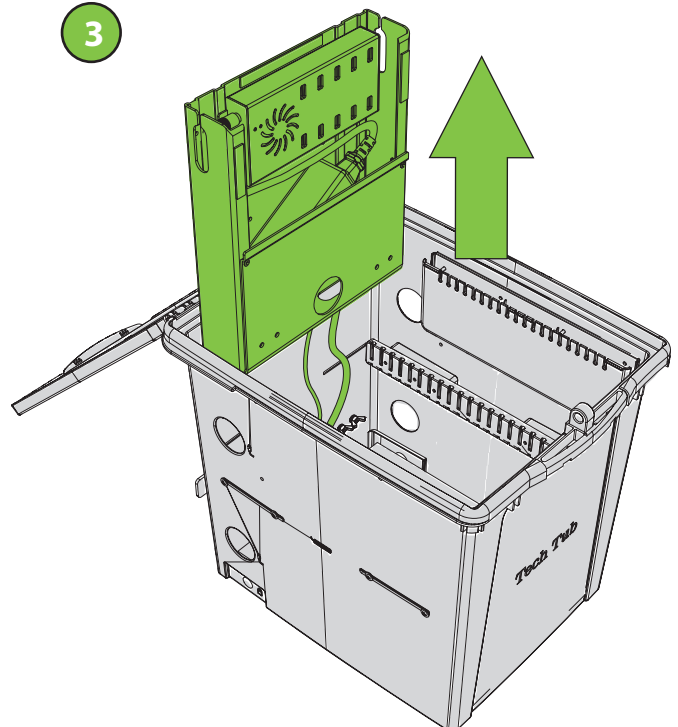
1



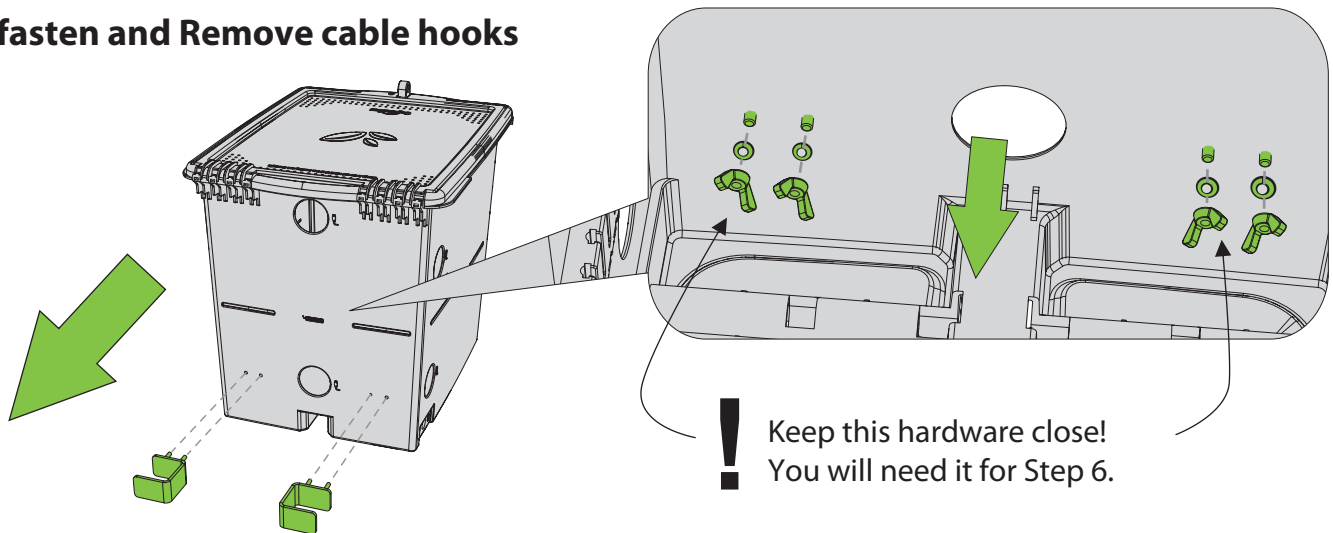
2



3



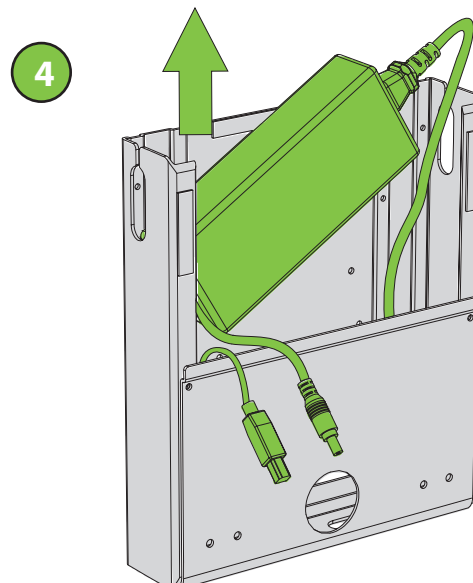
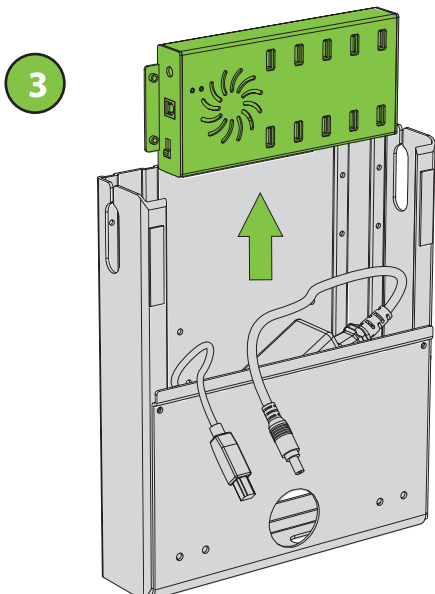
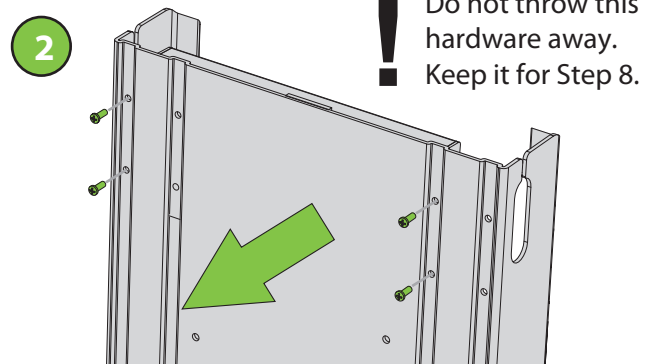
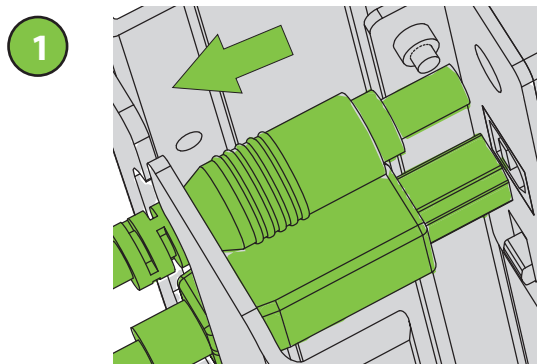
## Unfasten and Remove cable hooks



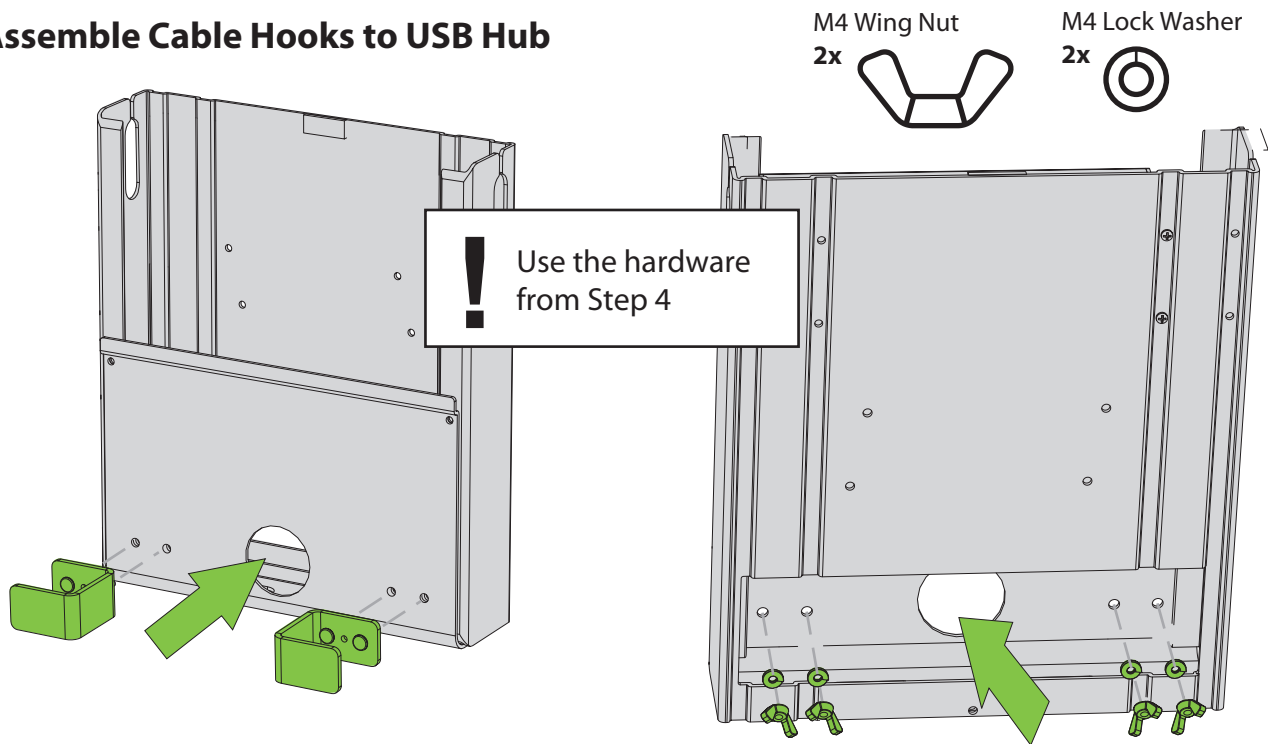
You will need: (Not to Scale) Screwdriver



## Unplug Power Adapter and USB Cables, Remove USB Hub, Remove Power Adapter



## Assemble Cable Hooks to USB Hub

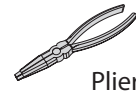


You will need: (Not to Scale)

Adjustable wrench



AND



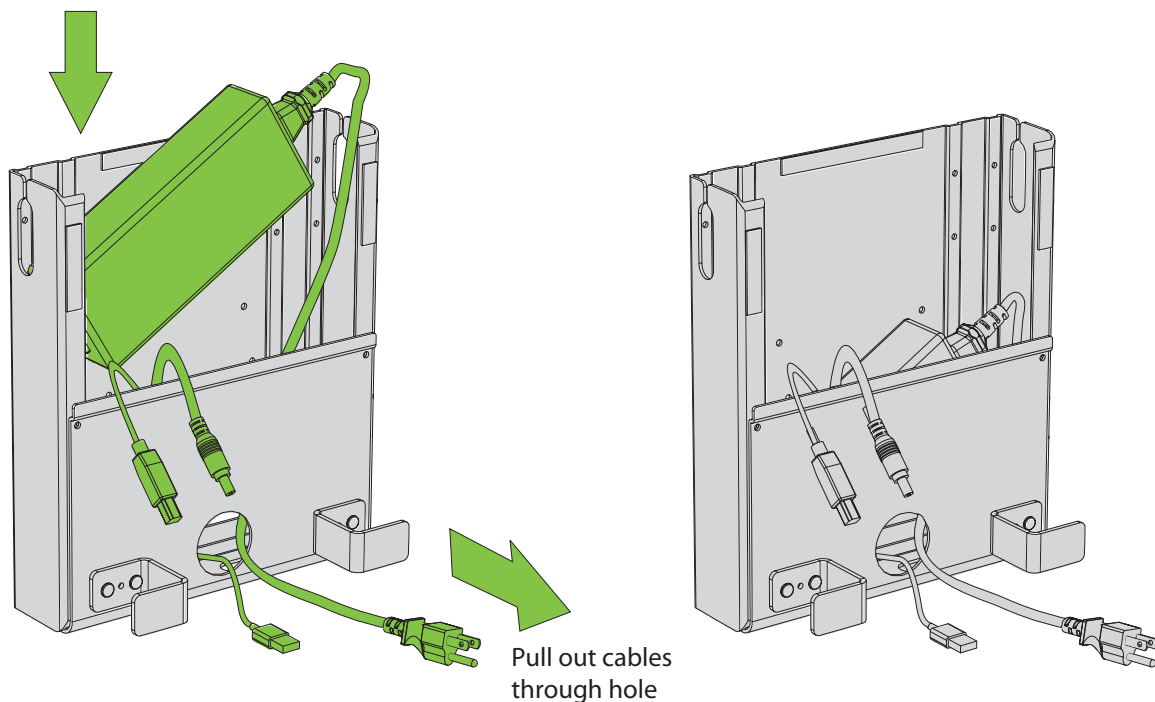
Pliers

AND

Screwdriver



## Add Power Adapter and Cables into Enclosure



8

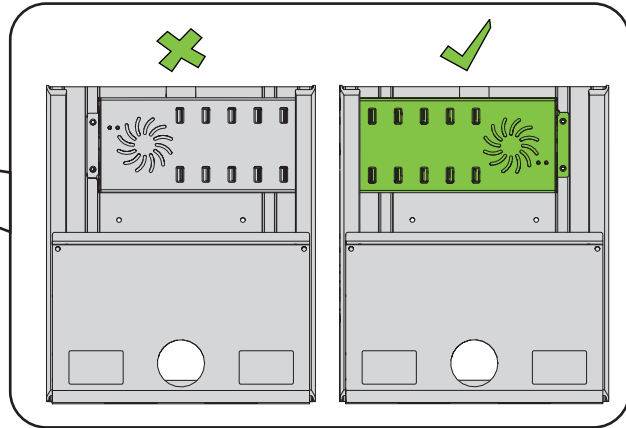
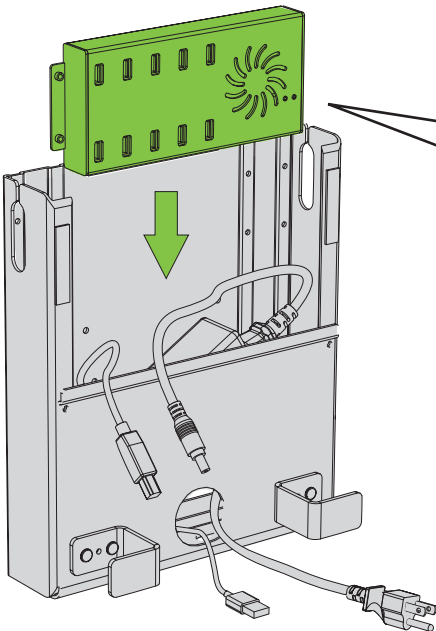
You will need: (Not to Scale)

Screwdriver

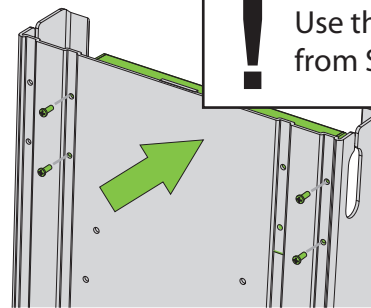


## Assemble USB Hub to Enclosure

1



2



Use the hardware  
from Step 5

Install and tighten  
hardware.

9

You will need: (Not to Scale)

Adjustable wrench



AND



Pliers

AND

Screwdriver



## Assemble USB Hub Enclosure to Tech Tub<sup>®</sup>

M3 Flat Washer  
2x



Use the hardware  
from Step 3

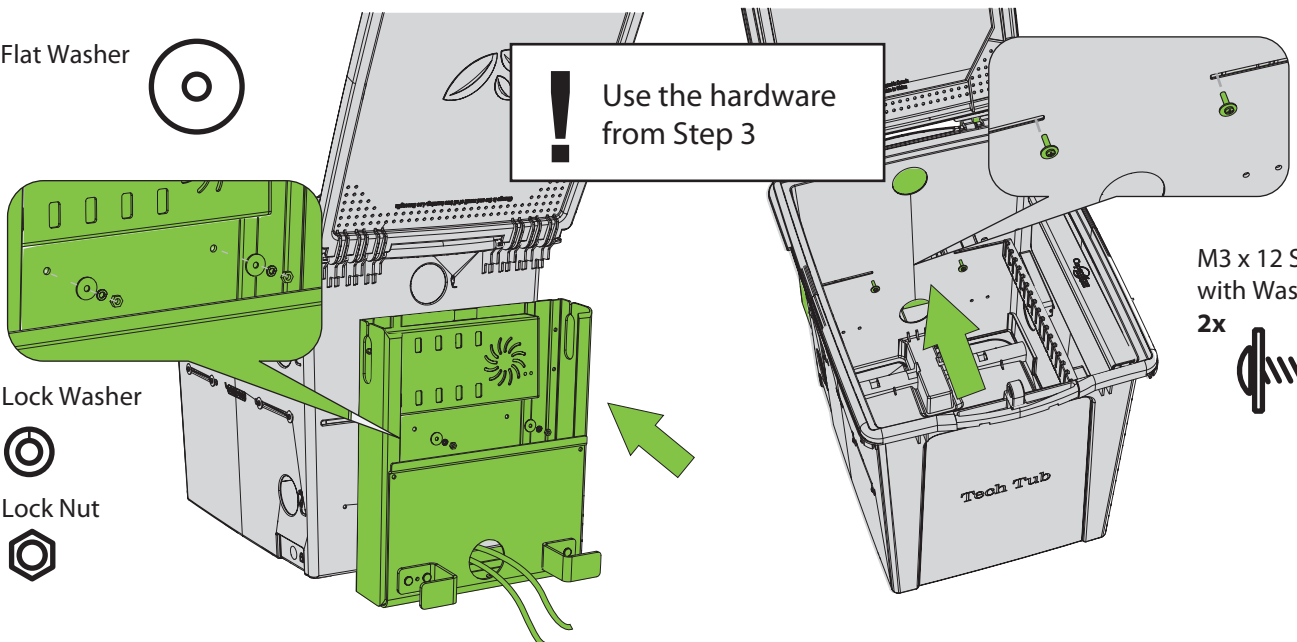
M3 Lock Washer  
2x



M3 Lock Nut  
2x



M3 x 12 Screw  
with Washer  
2x



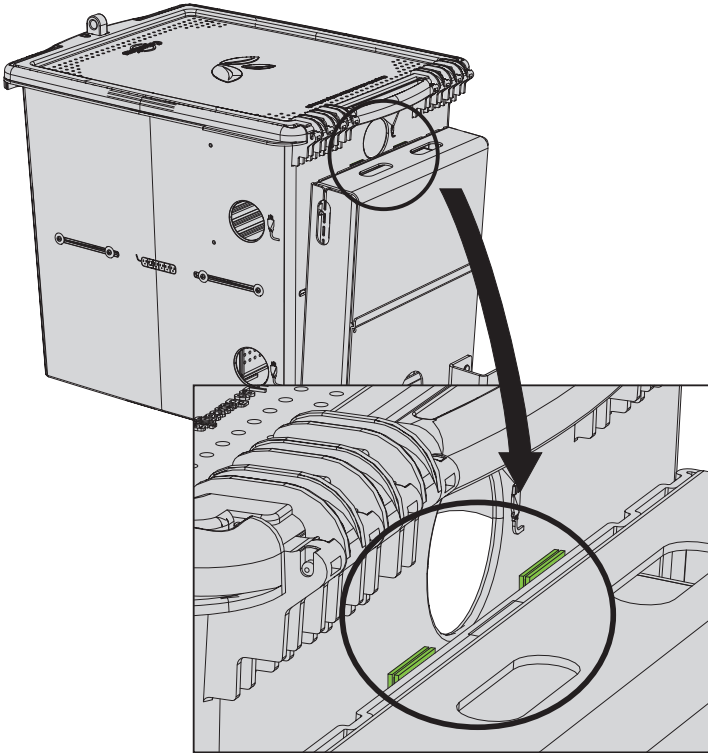


10

You will need: (Not to Scale)  
Hook and Loop Square with Adhesive  
2x

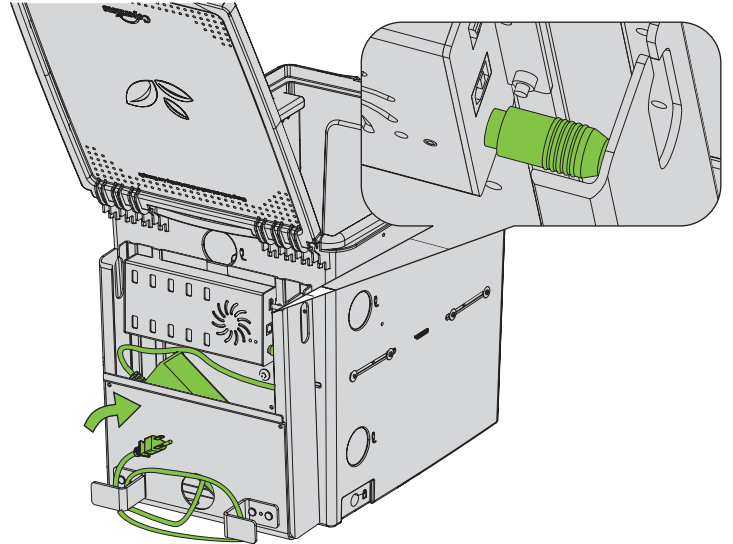


### Apply Hook and Loop Squares



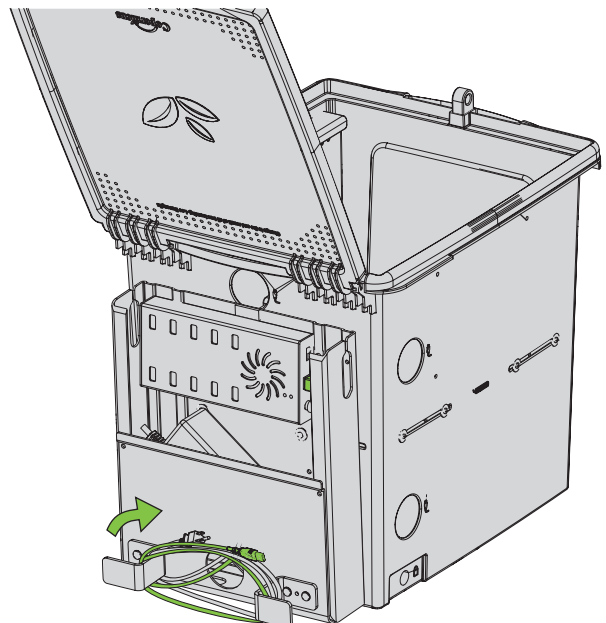
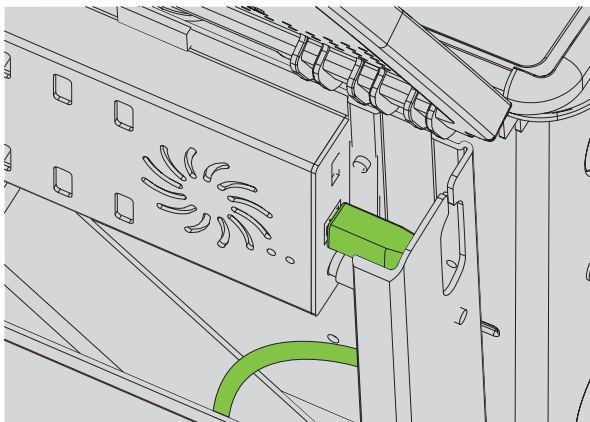
11

### Plug Power Adapter and Wrap Cable Around Cable Hooks



12

### Insert USB Cable into USB Hub and Wrap Around Cable Hooks





**!** If you have assembled your USB Hub on the outside of your Tech Tub<sup>®</sup>, please follow the remaining steps to setup the inside with your devices and cable management. Images may show the USB Hub on the inside.

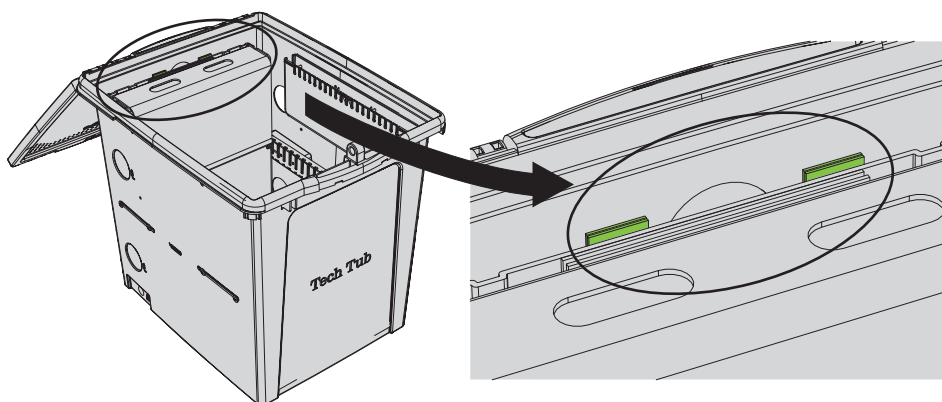
13

You will need: (Not to Scale)

Hook and Loop Square  
with Adhesive  
2x

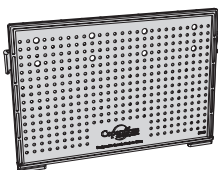


## Apply Hook and Loop Squares



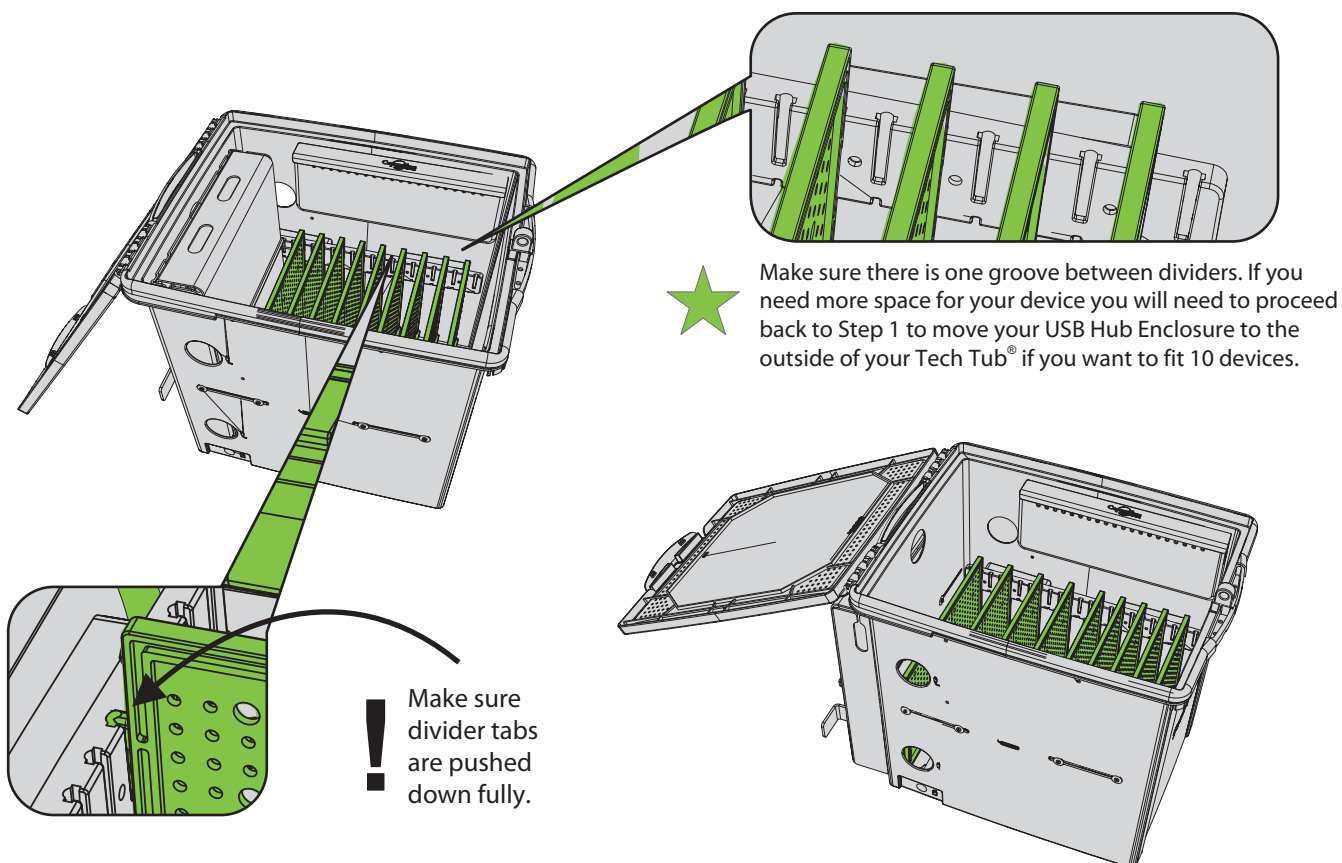
14

You will need: (Not to Scale)

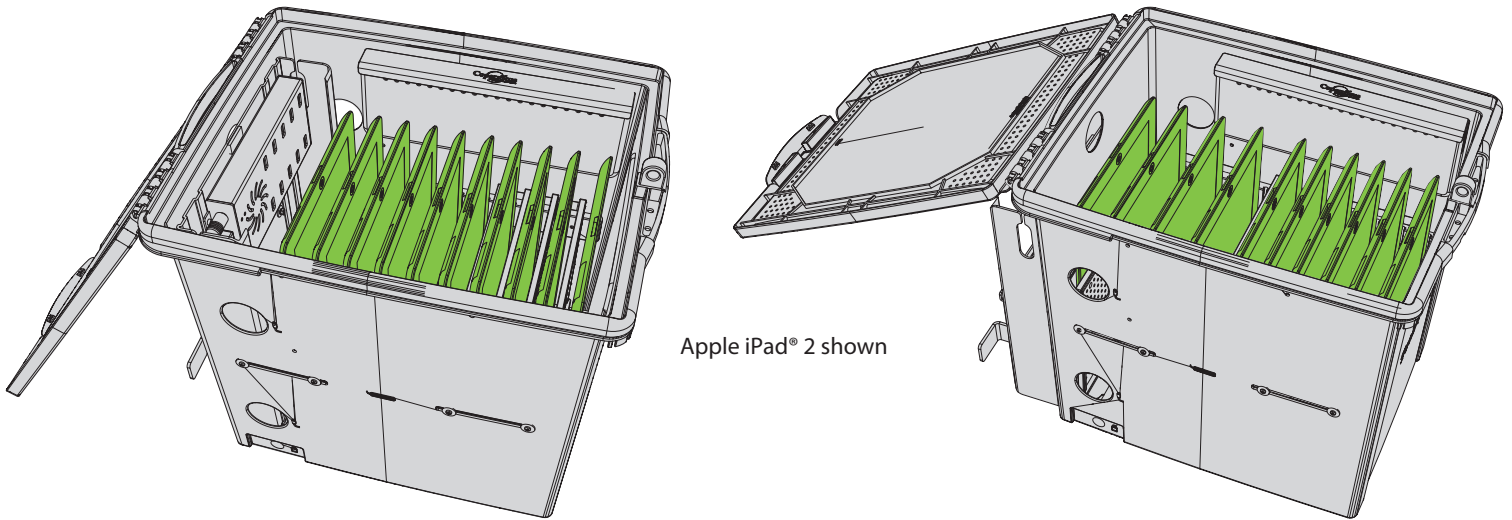


Divider  
9x

## Install Dividers



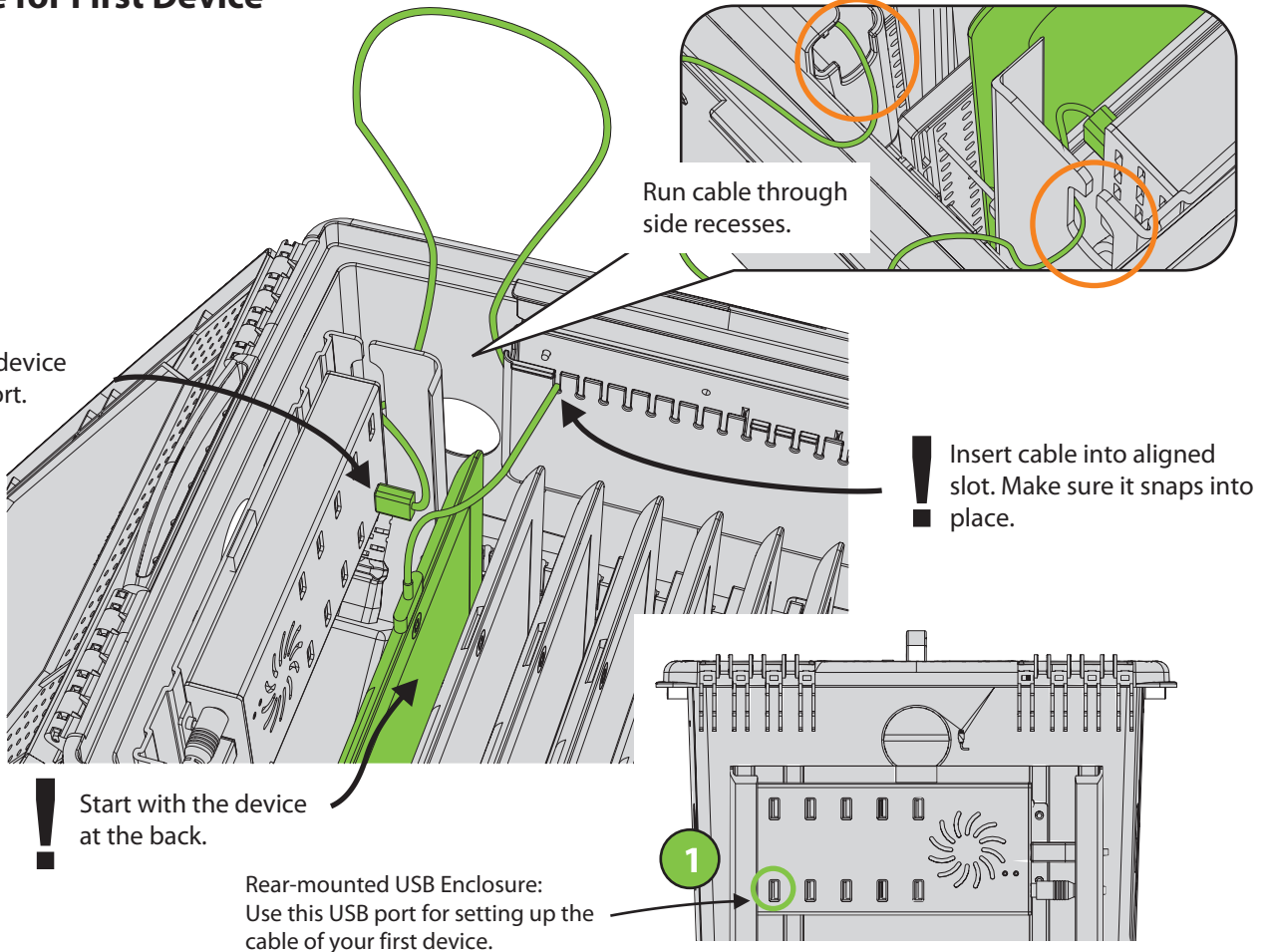
## Add Devices into Tech Tub®



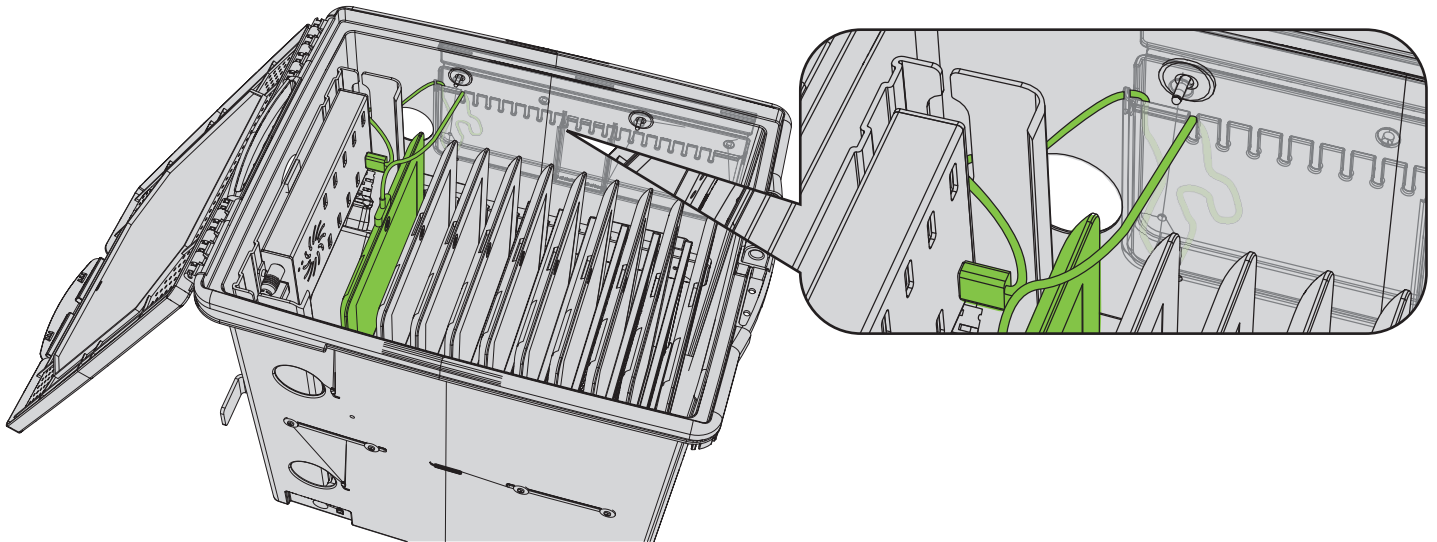
## Setup Cable for First Device



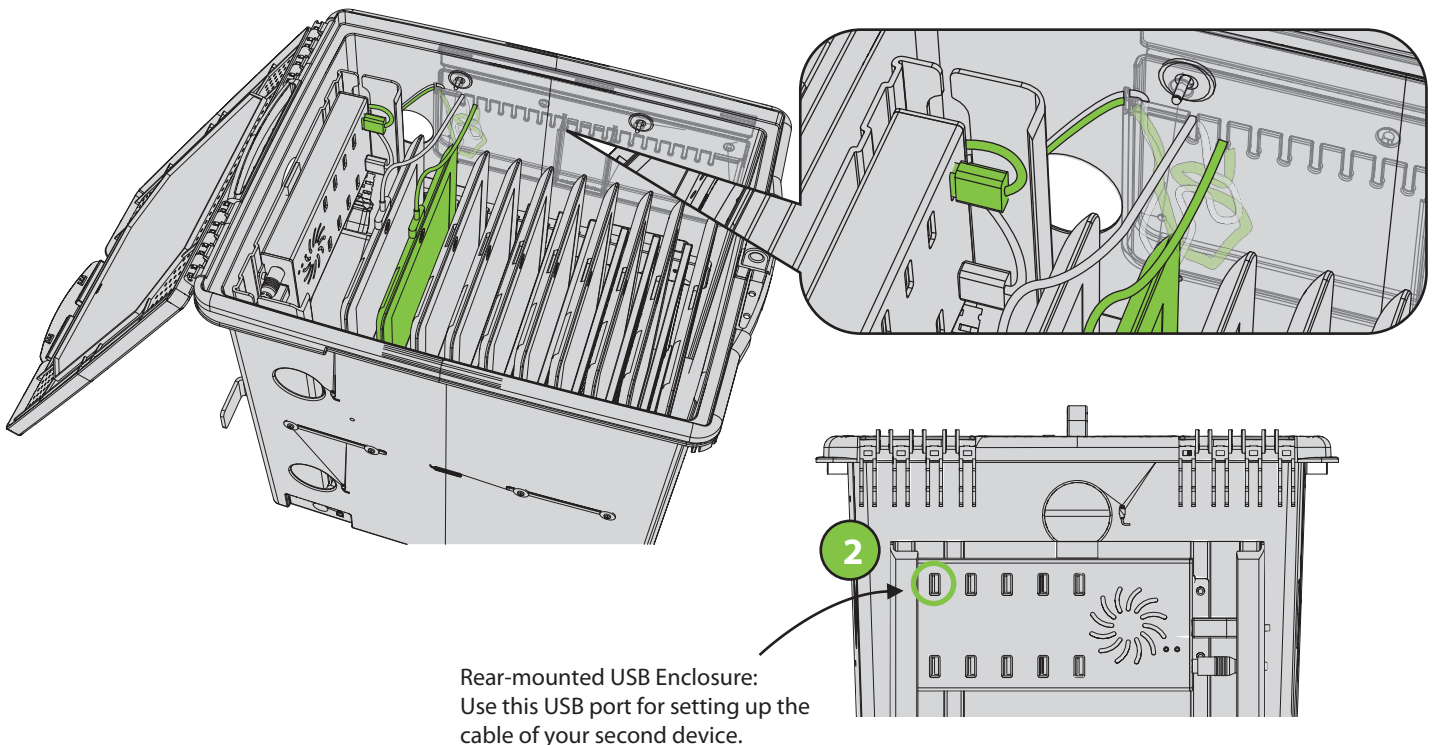
Plug USB end of device cable into first port.



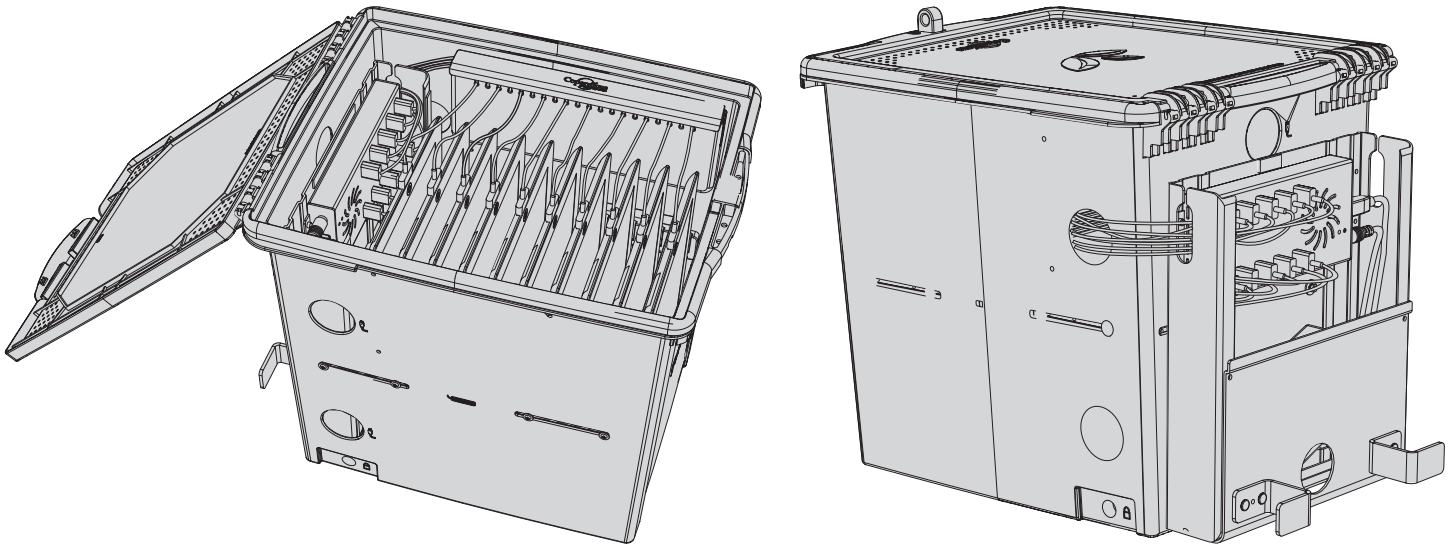
## Store Excess Cable in Cable Management Pocket



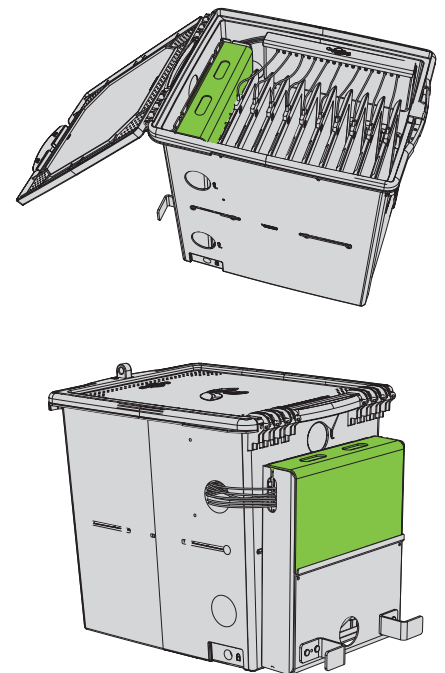
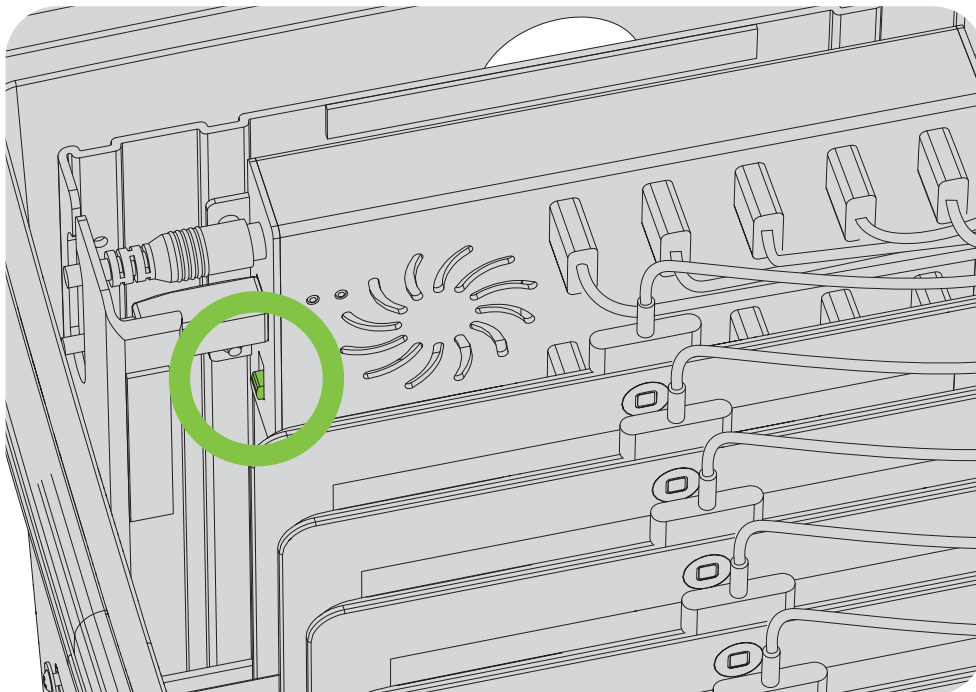
## Setup Cable for Second Device



## Repeat Steps 12 and 13 to Setup Remaining Devices



## Turn on USB Hub and Replace Cover





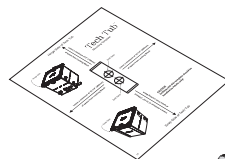
# OPTIONAL: Follow Steps 21 to 23 to install the Tech Tub® Locking Block and Locking System

21

You will need: (Not to Scale)



This system allows you to lock your Tech Tub® to a table or countertop. This is a really good idea if you leave your devices out in the open or your room doesn't lock. You can then lock the Tech Tub in place and lock the Tech Tub itself.

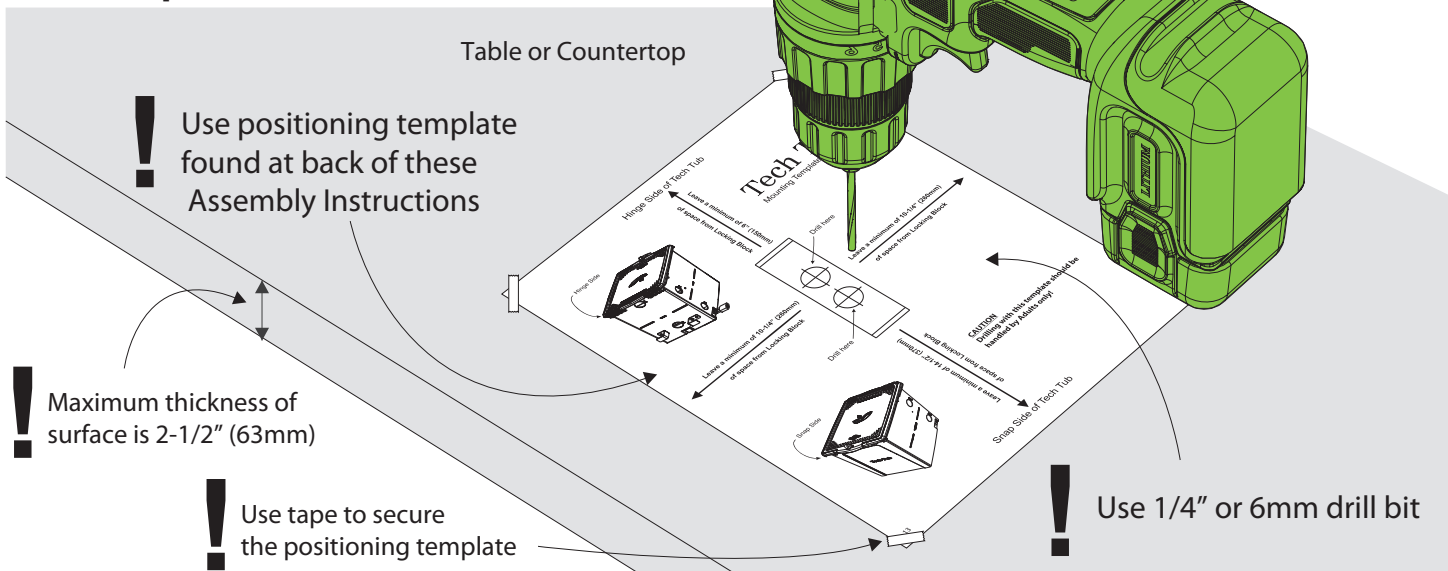


Positioning Template  
(found at back of this guide)  
1x



Drill with 1/4"/6mm drill bit

## Use Template and Drill Holes into Surface



22

Actual Size:



(A)

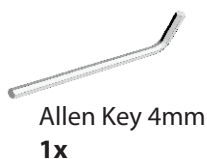
M6 x 70mm  
2x



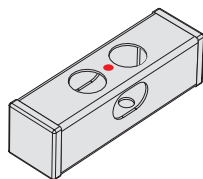
(B)

M6 Washer  
6x

You will need: (Not to Scale)



Allen Key 4mm  
1x



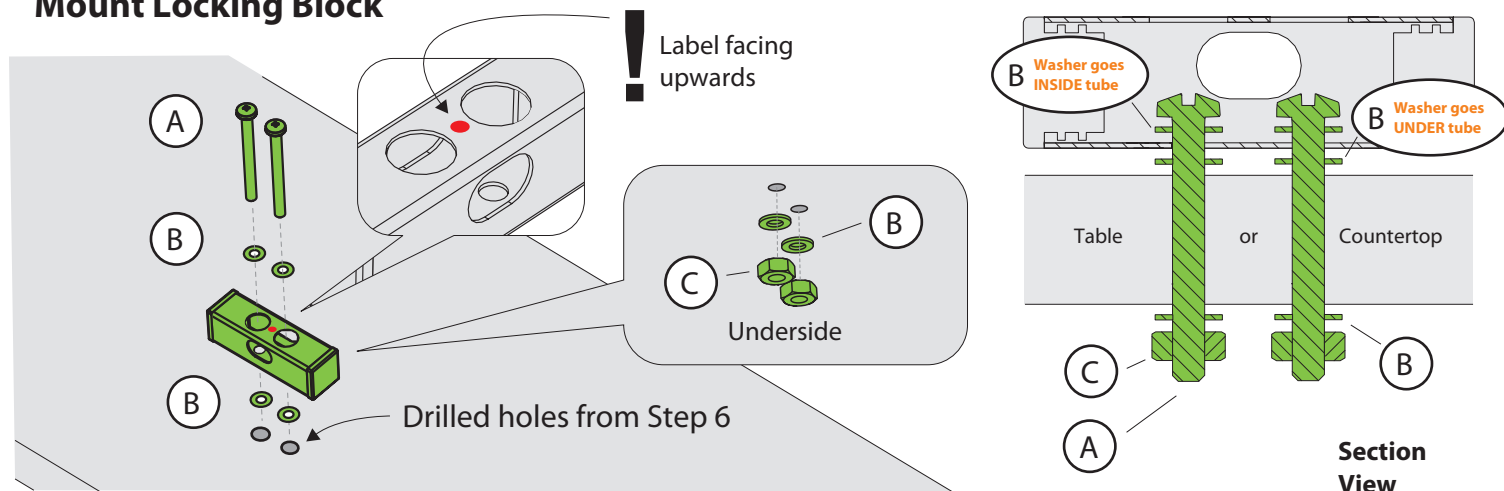
Locking Block  
1x



(C)

M6 Lock Nut  
2x

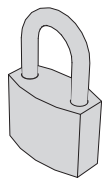
## Mount Locking Block



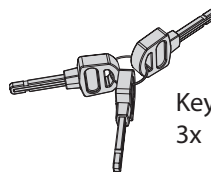
## OPTIONAL: Follow Steps 21 to 23 to install the Tech Tub<sup>®</sup> Locking Block and Locking System

23

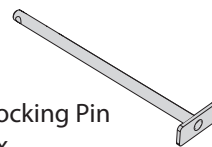
You will need: (Not to Scale)



Padlock  
1x



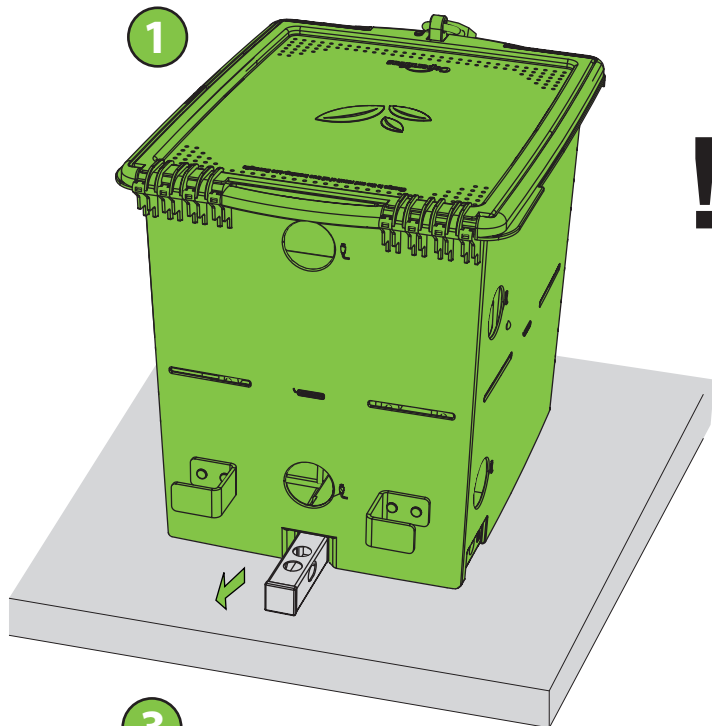
Key  
3x



Locking Pin  
1x

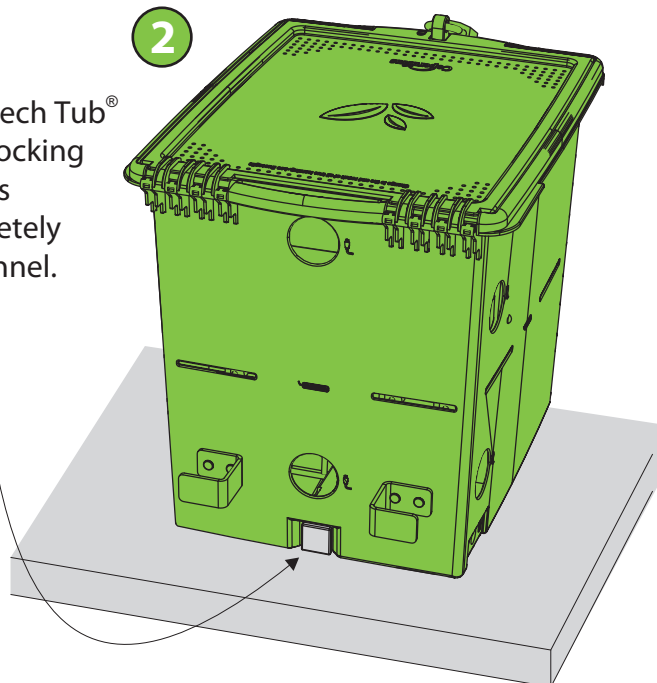
### Lock the Tech Tub<sup>®</sup> with Locking Pin

1



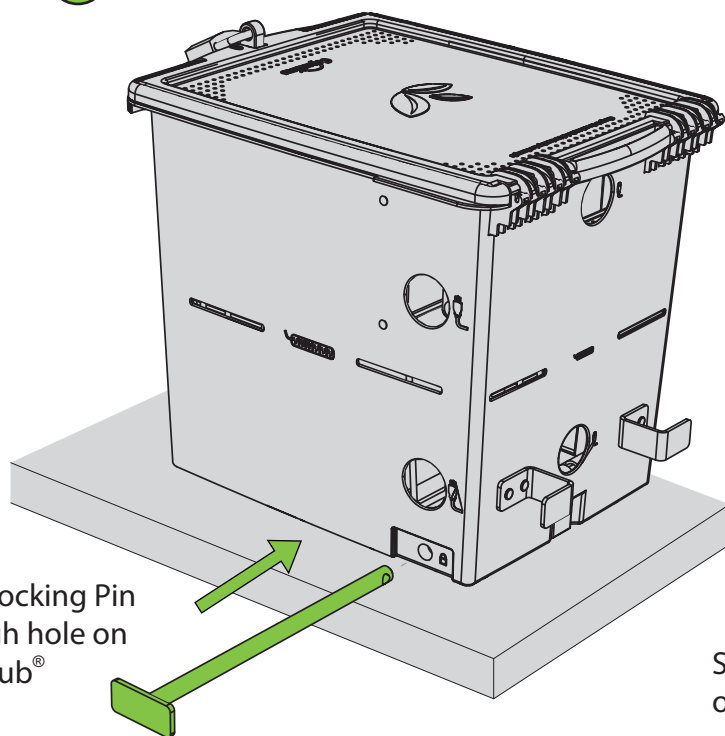
2

Push Tech Tub<sup>®</sup>  
until Locking  
Block is  
completely  
in channel.



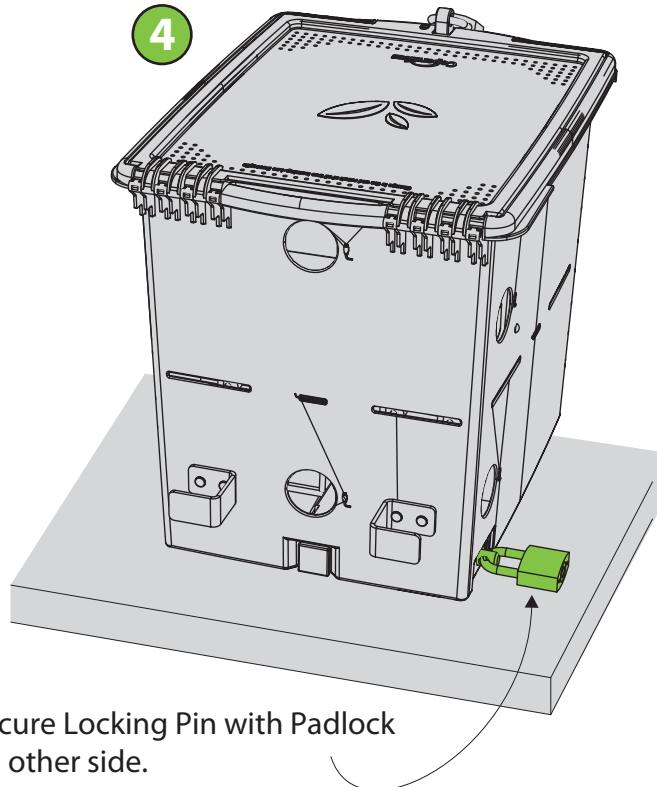
3

Slide Locking Pin  
through hole on  
Tech Tub<sup>®</sup>



4

Secure Locking Pin with Padlock  
on other side.





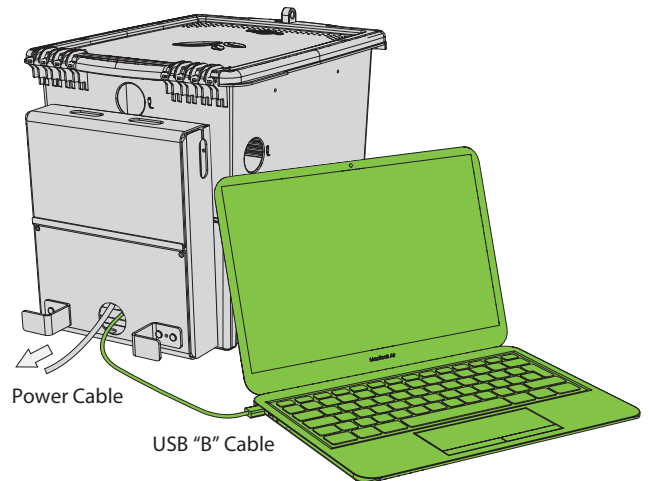
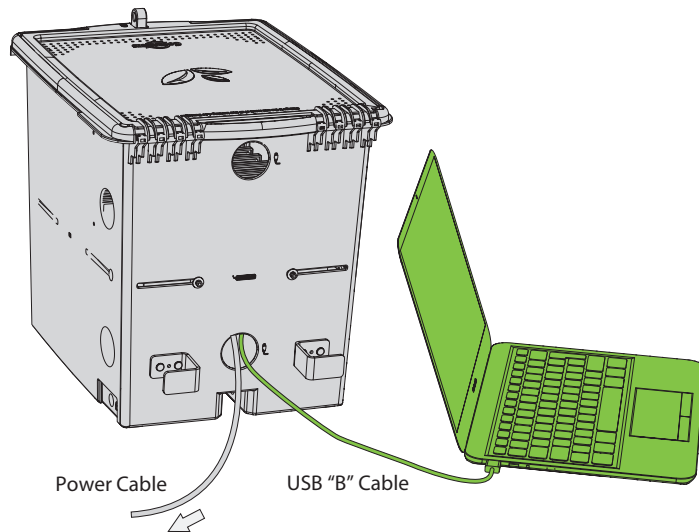
# Sync Devices using the USB Hub

1

Plug USB Cable into Apple MacBook®

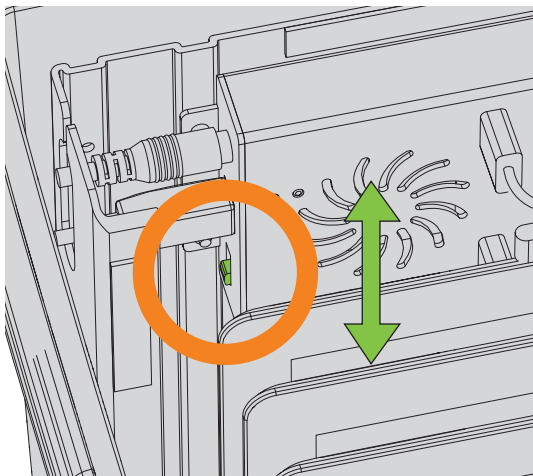


These steps apply to Apple® products only!  
(e.g. iPad®, iPad Mini™, iPod Touch®)



2

Turn on USB Hub. Make sure all devices are plugged in and USB Hub is plugged into outlet.



## IMPORTANT PRODUCT ADVISORY

**DO NOT LEAVE THIS PRODUCT PLUGGED IN AND RUNNING FOR MORE THAN 72 HOURS AT ONE TIME.**

**ONLY USE THE USB HUB WITH THE SUPPLIED POWER ADAPTER.**

**REMEMBER TO TURN OFF POWER TO USB HUB BEFORE UNPLUGGING FROM OUTLET.**

3

Use Apple Configurator or Apple Configurator 2 for synchronizing your devices on a MacBook®.

Apple Configurator works with Macbooks® running OS X 10.10 or later and Apple Configurator 2 works with Macbooks® running OS X 10.11 or later.



Scan this QR Code for resources on how to setup your devices with Apple Configurator.

<https://itunes.apple.com/us/itunes-u/ipad-management-using-apple/id567514148?mt=10>







## Tips for Use

### Device Management

Keeping track of your devices can be made even easier by creating a sign-out program.

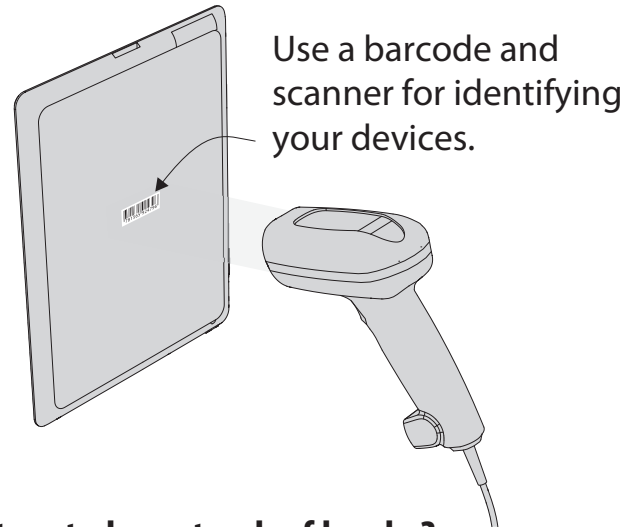
There are many automated software solutions available that make setting up and running a device check-out program very easy.

Here is a list of some companies and their products:

ResourceMate® - [www.resourcemate.com](http://www.resourcemate.com)

Neuton Data Systems - [www.neuton.net](http://www.neuton.net)

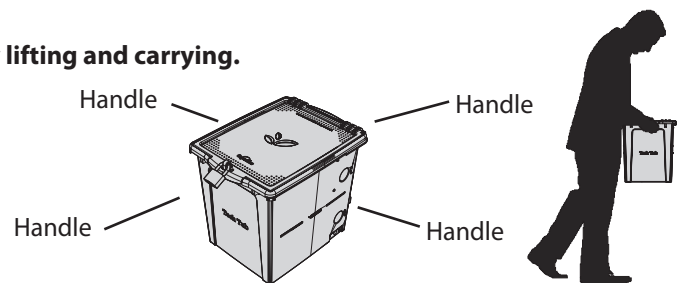
IntelliScanner - [www.intelliscanner.com](http://www.intelliscanner.com)



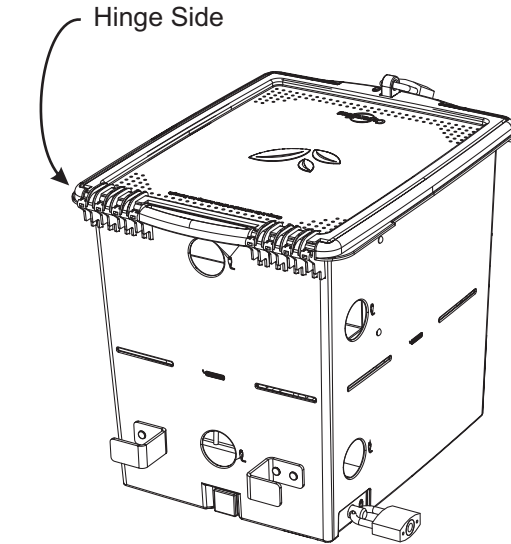
**Does your school already use an automated system to keep track of books?  
You could use this system to also keep track of your devices!**

### Carrying your Tech Tub®

Use the Handles along the sides of the Tech Tub® for easy lifting and carrying.



## Hinge Side of Tech Tub



Hinge Side

Leave a minimum of 5" (127mm) of space from Locking Block if the USB Enclosure is inside the Tech Tub™

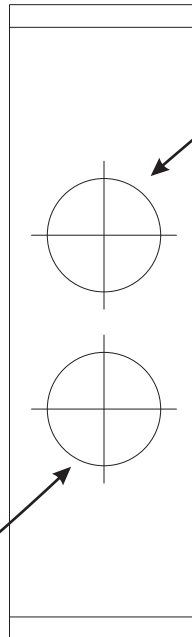
Leave a minimum of 7 5/8" (192mm) of space from Locking Block if the USB Enclosure is outside the Tech Tub™

# Tech Tub®

Mounting Template

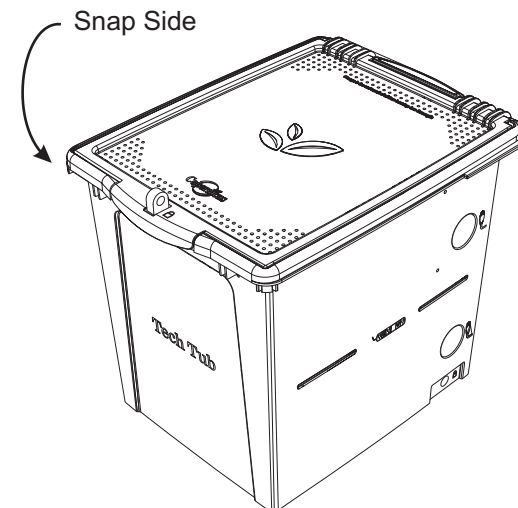
← Leave a minimum of 15-1/2" (395mm) of space from Locking Block →

Drill here



Drill here

← Leave a minimum of 15-1/2" (395mm) of space from Locking Block →



Snap Side

Leave a minimum of 11" (280mm)

of space from Locking Block

### **CAUTION**

**Drilling with this template should be handled by Adults only!**

## Snap Side of Tech Tub

