

## NEW! Hand Sanitizer Stands and Wall Mount



These straight-forward dispenser options are ideal for areas that always have people coming and going, like the entrance to the main office, staff lunchroom or classrooms tight for space.

### Hand Sanitizer Stand (SAN001)

**Features:**

- Sturdy metal stand is easily wiped down
- Fits any **manual** wall dispenser or add ours
- Drip tray shown is only available with our dispenser
- Floor to bottom of dispenser is 40"

**Dimensions**

50" H x 15 3/4" W x 15 3/4" D

### Tabletop Hand Sanitizer Stand (SAN002)

**Features:**

- Sturdy metal stand that can be easily wiped down
- Child lock out feature (see page 2 for more details)
- Fits any **manual** wall dispenser or add ours

**Dimensions**

16" H x 7" W x 10" D

**Warranty for both models**

Lifetime

**Please note:**

- Padlock for lock out not included, use standard padlock (SAN002)
- Dispenser sold separately
- Sanitizer not included

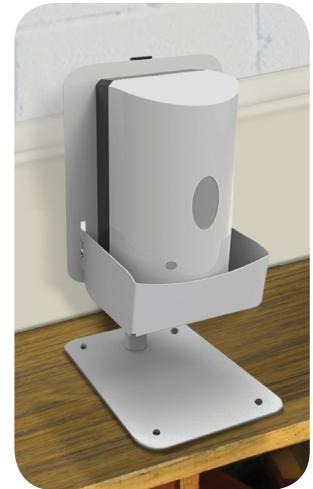


**Optional add-on for stand and tabletop: No-touch automatic dispensers (HDS1 / HDS2)**

- Dispenser is refillable from bulk sanitizer jugs so there is no need to buy disposable refill cartridges
- Your choice of battery operated or with battery operated/power adapter
- We tested our dispensers over 400,000 times!



Hand Sanitizer Stand (SAN001)



Tabletop Hand Sanitizer Stand (SAN002)



Child lock out feature shown locked (left) and used as a drip tray when unlocked (right)

**Wall-mounted Hand Sanitizer Dispenser (SAN003)**

When space is not available for a stand, this wall-mounted dispenser can be installed on any wall surface. It includes a child lock out safety feature and one no-touch automatic dispenser (battery operated/power adapter). Padlock and sanitizer not included.

**Dimensions**

10" H x 5" W x 5" D

**Warranty**

Lifetime on bracket and 1 year on dispenser