

PDR20KD

# Spring Loaded Drying Rack



## Assembly Guide PDR20KD\_2019\_A

Check out our other products online at  
[www.copernicused.com](http://www.copernicused.com)

For assistance, please contact us:

**1-800-267-8494**

Email [info@copernicused.com](mailto:info@copernicused.com)

Have your packing slip ready for reference

## WARNING !

- This product is meant to be assembled by an adult.
- In its unassembled state, small parts present a hazard.
- To be used under direct supervision of an adult.



Please Recycle

# Spring Loaded Drying Rack



## Assembly Guide PDR20KD\_2019\_A

Check out our other products online at  
[www.copernicused.com](http://www.copernicused.com)

For assistance, please contact us:

**1-800-267-8494**

Email [info@copernicused.com](mailto:info@copernicused.com)

**Have your packing slip ready for reference**

Dear Educator,

Thank you for purchasing the PDR20KD. We hope it meets all your expectations and you and your students enjoy using it at your school.

If you have any questions, concerns or ideas on how we can improve please let us know by contacting our Customer Solutions Ninjas at 1-800-267-8494 or [info@copernicused.com](mailto:info@copernicused.com).

Happy teaching,

Kaylyn Belcourt-McCabe  
President

We do not inherit the earth from our ancestors, we borrow it from our children.	Change is the end result of all true learning.	What you leave behind is not what is engraved in stone monuments, but what is woven into the lives of others.	Education is the most powerful weapon which you can use to change the world.
---	--	---	--

LEO BUSCAGLIA

NORTH AMERICAN

PROVERB

PERICLES

NELSON MANDELA



## Validate Your Warranty

To validate your warranty, submit the ON-LINE form at [www.copernicused.com](http://www.copernicused.com)  
**Enter a draw to win a Copernicus Product for your classroom at the same time!**



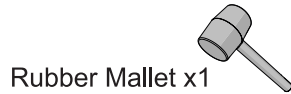
# Spring Loaded Drying Rack - *Parts*

**Before beginning, you should have:**

Additional tools required:



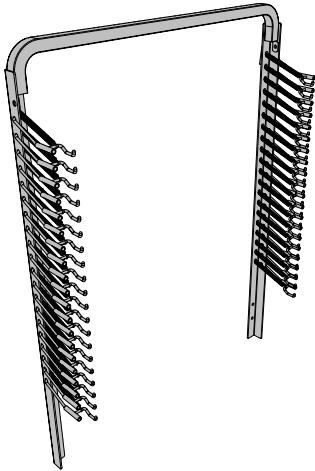
Adjustable wrench x1



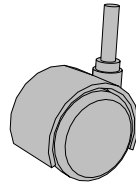
Rubber Mallet x1

Contents - Box 1

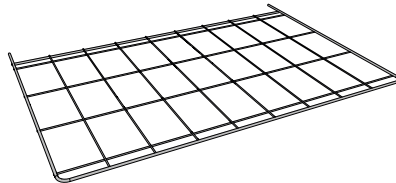
Back Frame Assembly  
1x



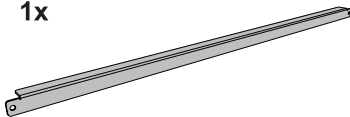
2" Caster with Brake  
4x



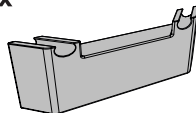
Drying Rack  
20x



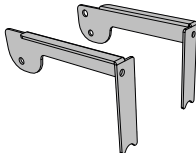
Locking Bar Stretcher  
1x



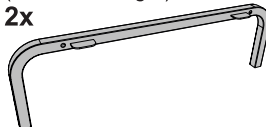
Rack Spacer  
40x



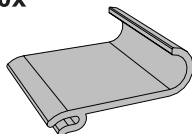
Locking Bar Arms  
(1 Left, 1 Right)  
2x



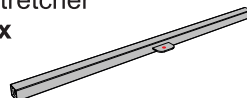
Side Leg  
(1 left and 1 right)  
2x



Paper Catch  
40x



Stretcher  
2x



In Box 1

Hardware  
Actual Size

(A) M6 x 35mm  
8x



(B) M6 x 15mm  
2x



(C) M5 x 10mm  
2x



(D) M6 Lock  
Washer  
4x



(E) Nylon Washer  
4x



(F) M5 Lock Nut  
2x



(G) M6 Lock Nut  
6x



Allen Key  
(Not to Scale)  
1x



# Tips for Assembly

## Watch for These Helpful Symbols

This symbol denotes a 2-Person Task. For safety, please ensure that there are the suggested number of people working on steps displaying this symbol.



Watch for this symbol throughout the Assembly Guide. Wherever you see it, pay close attention. The symbol denotes a step needing extra attention to ensure it is done correctly.



The star symbol highlights an advisory note.

## Before You Begin

- Lay out and identify all of the included parts.
- The hardware has been packed according to step.
- Read the assembly guide over once to familiarize yourself with them.



Please note that in its unassembled state, this product contains parts that can be hazardous to small children. This product should be assembled by an adult.



## As You Assemble the Unit

- Follow the steps in sequence.
- Before beginning each step, find the part(s) that you need for that step.
- Pay attention to the labels on the parts; they are there to help direct you at certain stages.
- The title of each step states what you will be doing. Review the text and the pictures as you build the unit.

# Customer Service - FAQ's



## For missing parts and other issues regarding this product:

Please call Copernicus Customer Service, where we will be happy to help.  
1-800-267-8494. Monday - Friday 8:30am - 4:30 pm EST.

OR

Email our Tech Support Service at [info@copernicused.com](mailto:info@copernicused.com)

## Need Tech Support? Have a Question?



Email our Tech Support Service

## Check out some of our other great products!



[www.copernicused.com](http://www.copernicused.com)



1

Actual Size:

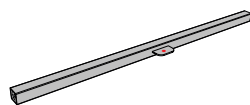


(A)  
M6 x 35mm  
4x

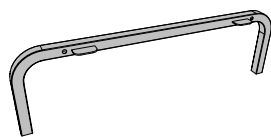


(D)  
M6 Lock Washer  
4x

You will need: (Not to Scale)

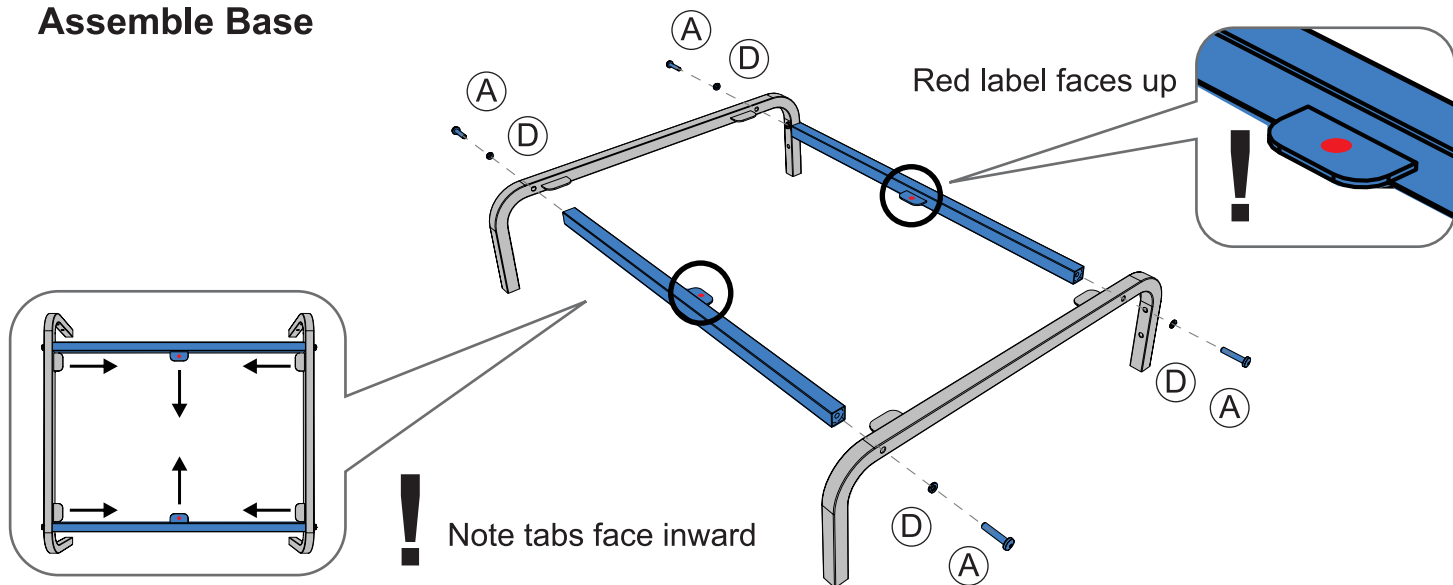


Stretcher  
2x



Side Leg  
(1left and 1right)  
2x

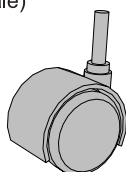
## Assemble Base



2

Actual Size:

You will need: (Not to Scale)



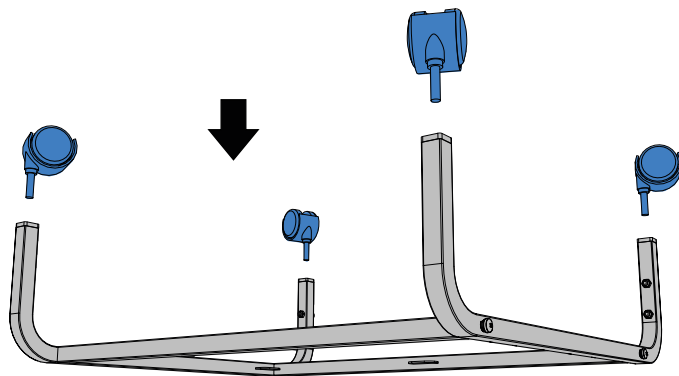
2" Caster With Brake  
4x

## Install Casters



Flip unit upside down.

Press Casters firmly into the Base:  
Casters will click into place.  
If necessary, tap the caster in  
using a rubber mallet.



3

Actual Size:



(A)  
M6 x 30mm  
4x



(G)  
M6 Lock Nut  
4x



2 Person

You will need: (Not to Scale)

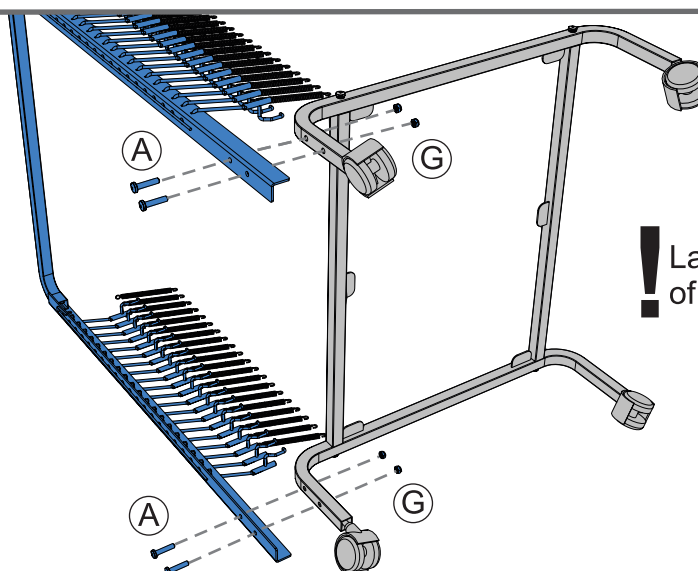


Back Frame Assembly  
1x



Adjustable wrench x1

## Attach Back Frame

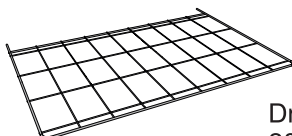


! Lay unit on side for ease of assembly.

4

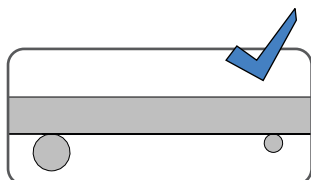
Actual Size:

You will need: (Not to Scale)

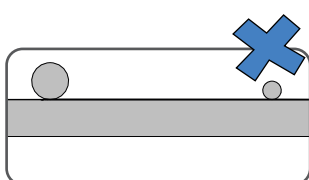


Drying Rack  
20x

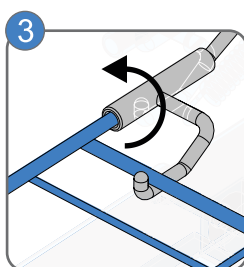
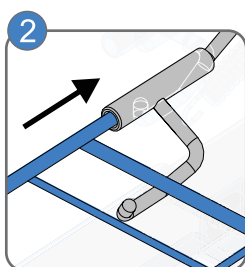
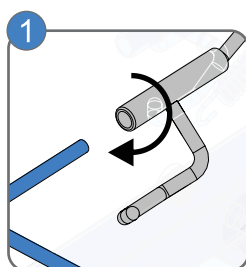
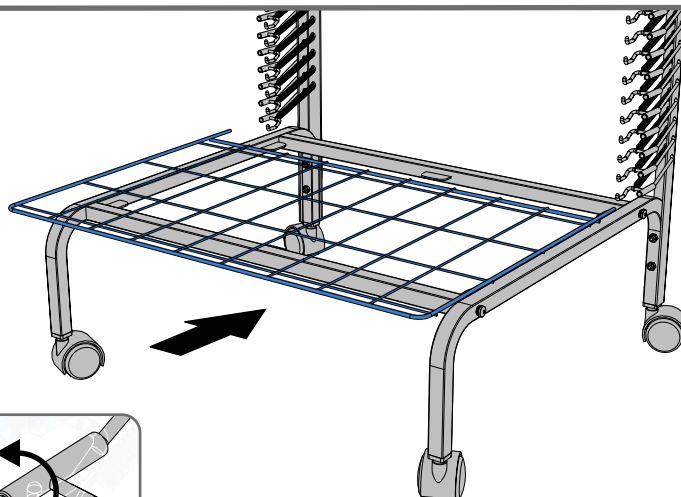
## Install Drying Racks



Grid wires should be below frame wire



Incorrect orientation



! Follow the steps below until all racks have been installed and secured on both sides.

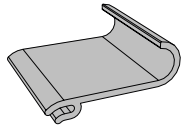




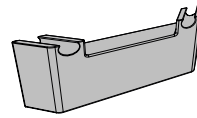
5

Actual Size:

You will need: (Not to Scale)



Paper Catch  
40x



Rack Spacer  
40x

## Insert Paper Catches and Rack Spacer



6

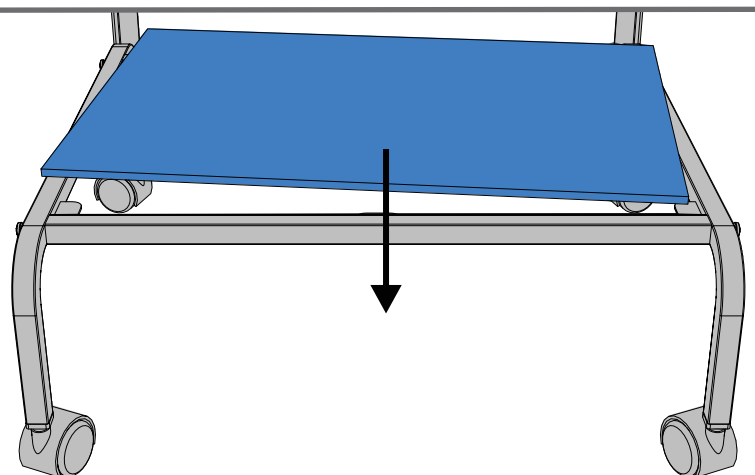
Actual Size:

You will need: (Not to Scale)

## Cutout Cardboard Drip Tray

Cut out your Cardboard Drip Tray from your packaging !

Replace it as often as you need, just cut a new one the following size:  
**W 55.6cm x D 37.7cm**



7

Actual Size:



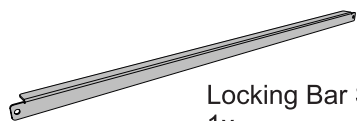
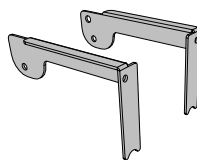
C

M5 x 10mm  
2x

F

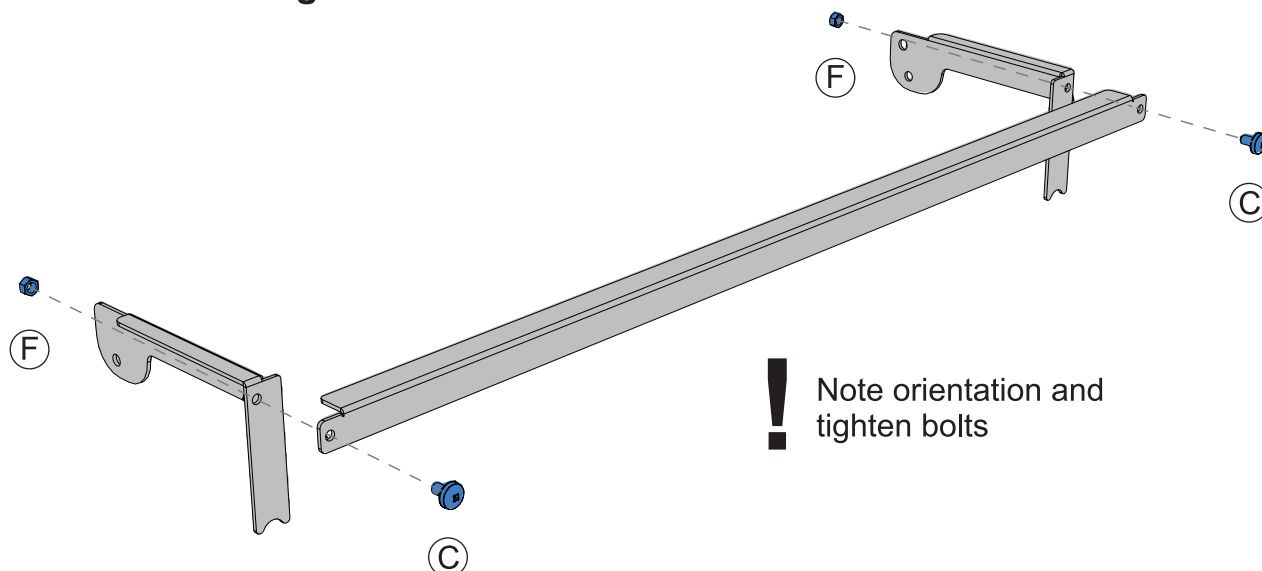
M5 Lock Nut  
2x

You will need: (Not to Scale)

Locking Bar Stretcher  
1xLocking Bar Arms  
(1 Left, 1 Right)  
1x

Adjustable wrench x1

## Assemble Locking Bar



8

Actual Size:



B

M6 x 15mm  
2x

E

Nylon Washer  
4x

G

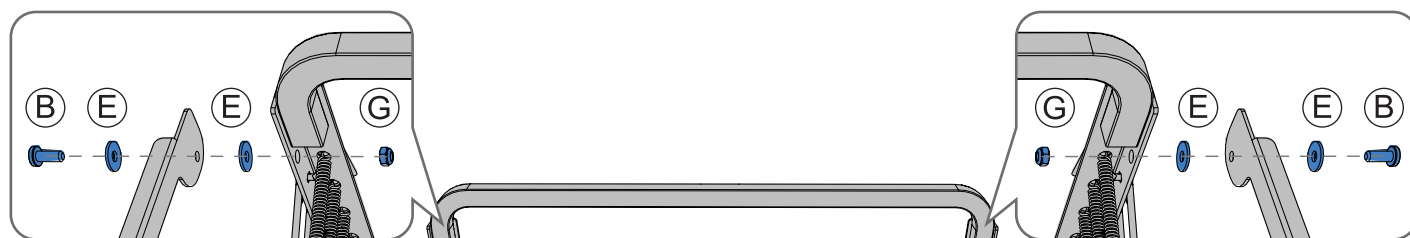
M6 Lock Nut  
2x

You will need: (Not to Scale)



Adjustable wrench x1

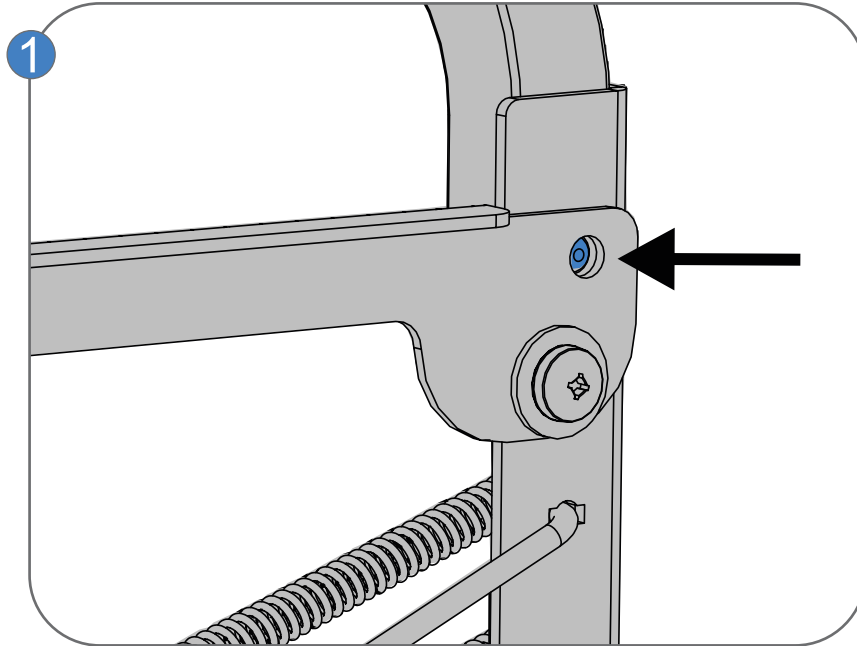
## Install Hold Down Bar



! Assemble the Hold Down Bar on the right side of the unit first (Valco button)



## Using Locking Bar



! To release the Locking Bar press the locking mechanism inwards and lift up, to lock the Locking Bar press down until you hear a click.

