



Put enough gel on your hand to cover the surface

Rub hands together for

20

seconds until the gel is dry

Note: Do not rinse or wipe off the hand sanitizer before it's dry; it may not work as well against germs.



Rub hands together for

20
seconds
until the gel is dry

Wash your hands!

Hands that look clean can still have icky germs!

Dry



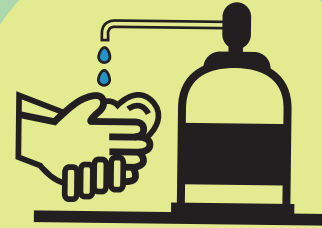
Rinse



Scrub hands for at least 20 seconds



Use soap



Wet

